

LOC I-BON <b>111.5</b>	APP CRS <b>050°</b>	Rwy Idg TDZE Apt Elev	<b>8000</b> <b>1498</b> <b>1519</b>
---------------------------	------------------------	-----------------------------	---

# ILS or LOC RWY 5

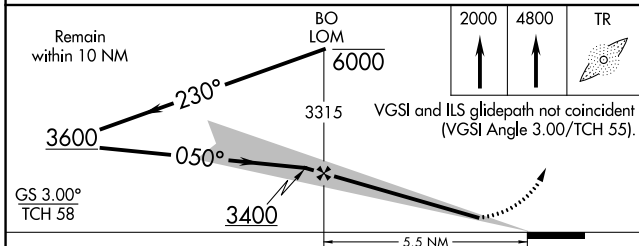
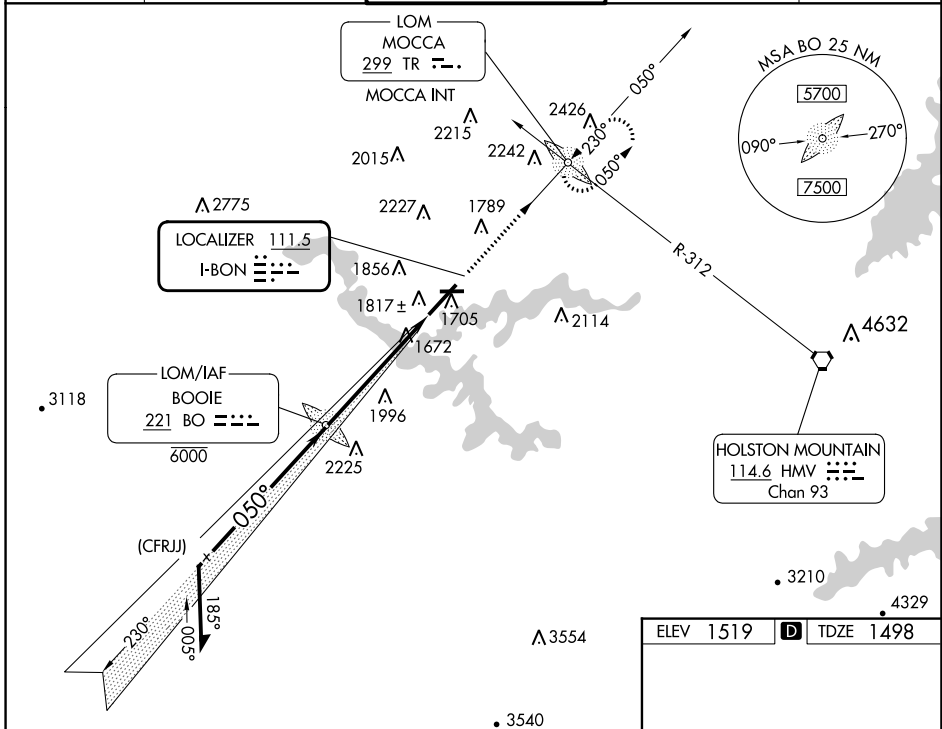
TRI-CITIES (TRI)

ADF required. RADAR required for procedure entry.

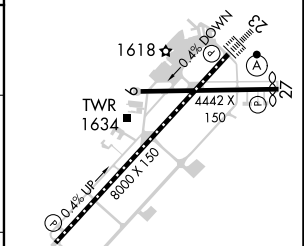
**⚠** Circling to Rwy 9 NA at night. Circling NA northwest of Rws 9 and 23. Autopilot coupled approach NA below 2200. Procedure NA when control tower closed.

MISSED APPROACH: Climb to 2000 then climb to 4800 direct MOCCA LOM INT and hold, continue climb-in-hold to 4800.

ATIS <b>118.25</b>	TRI-CITY APP CON ★ <b>134.425 349.0</b>	TRI-CITY TOWER ★ <b>119.5 (CTAF) 257.8</b>	GND CON <b>121.7 348.6</b>	UNICOM <b>122.95</b>
-----------------------	--	---	-------------------------------	-------------------------



ELEV 1519	<b>D</b> TDZE 1498
-----------	--------------------



CATEGORY	A	B	C	D
S-ILS 5	1698/40		200 (200-¾)	
S-LOC 5	2100/55	602 (600-1)	2100-1¾	602 (600-1¾)
<b>C</b> CIRCLING	2120-1 601 (700-1)	2180-1 661 (700-1)	2320-2¼ 801 (900-2¼)	2500-3 981 (1000-3)

FAF to MAP 5.5 NM					
Knots	60	90	120	150	180
Min:Sec	5:30	3:40	2:45	2:12	1:50

SE-1, 11 JUL 2024 to 08 AUG 2024

SE-1, 11 JUL 2024 to 08 AUG 2024