

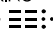
(TRI3.TRI) 24081

AL-426 (FAA)

TRICITIES THREE DEPARTURE (OBSTACLE)

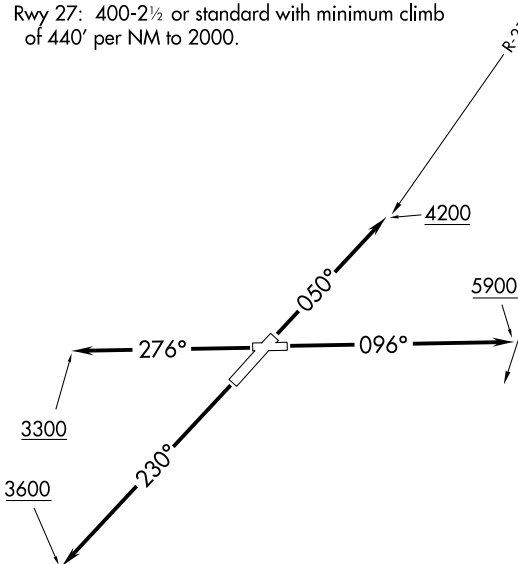
TRI-CITIES (TRI)
BRISTOL/JOHNSON/KINGSPORT, TENNESSEE

ATIS
118.25
APP CON ★
134.425 349.0
TRI CITY TOWER ★
119.5 (CTAF) 257.8
GND CON
121.7 348.6
UNICOM
122.95

GLADE SPRING
115.55 GZG 
Chan 102 (Y)

TAKEOFF MINIMUMS

- Rwy 5: Standard with minimum climb of 250' per NM to 2500 or 1100-3 for climb in visual conditions.
- Rwy 9: 200-1% or standard with minimum climb of 215' per NM to 2000, or alternatively, with standard takeoff minimums and a normal 200' per NM climb gradient, takeoff must occur no later than 1500' prior to DER.
- Rwy 23: 200-1% with minimum climb of 220' per NM to 4300 or standard with minimum climb of 370' per NM to 2300 or 1100-3 for climb in visual conditions.
- Rwy 27: 400-2½ or standard with minimum climb of 440' per NM to 2000.



NOTE: Chart not to scale.

DEPARTURE ROUTE DESCRIPTION

- TAKEOFF RWY 5: Climb heading 050° to intercept GZG VOR/DME R-217 northeast bound to 4200 before proceeding on course.
- TAKEOFF RWY 9: Climb heading 096° to intercept GZG VOR/DME R-200 northbound to 5900 before proceeding on course.
- TAKEOFF RWY 23: Climb heading 230° to 3600 before proceeding on course.
- TAKEOFF RWY 27: Climb heading 276° to 3300 before proceeding on course.

VCOA RWY 5, 23: Obtain ATC approval for VCOA when requesting IFR clearance. Climb in visual conditions to cross Tri-Cities Airport at or above 2500 then climb to 3500 via GZG VOR/DME R-217 northeast bound before proceeding on course.

TRICITIES THREE DEPARTURE (OBSTACLE)
(TRI3.TRI) 07DEC17

BRISTOL/JOHNSON/KINGSPORT, TENNESSEE
TRI-CITIES (TRI)

SE-1, 11 JUL 2024 to 08 AUG 2024

SE-1, 11 JUL 2024 to 08 AUG 2024