

DAVIS MONTHAN TWO DEPARTURE (DMA2•DMA)

DAVIS-MONTHAN AFB (KDMA)

TUCSON, ARIZONA

DME required

AL-429 [USAF]

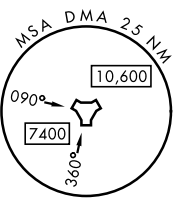
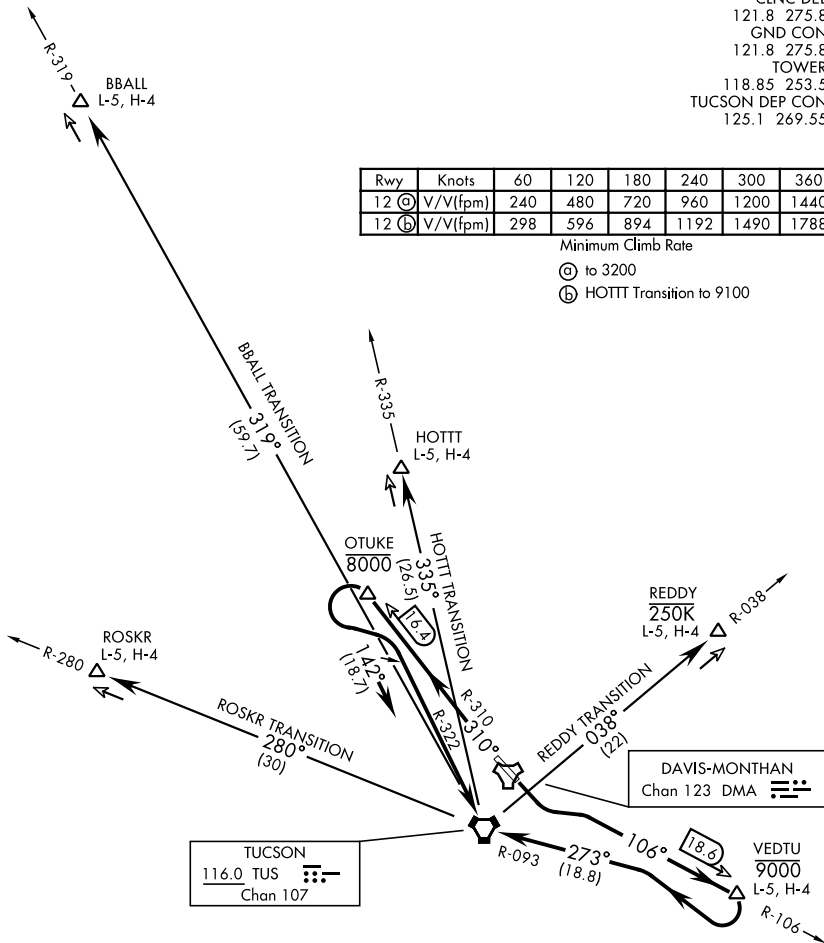
ATIS ★ 270.1
 CLNC DEL
 121.8 275.8
 GND CON
 121.8 275.8
 TOWER
 118.85 253.5
 TUCSON DEP CON
 125.1 269.55

Rwy	Knots	60	120	180	240	300	360
12 (A)	V/V(fpm)	240	480	720	960	1200	1440
12 (B)	V/V(fpm)	298	596	894	1192	1490	1788

Minimum Climb Rate

(A) to 3200

(B) HOTTT Transition to 9100



9413

During RADAR operations aircraft will receive RADAR vectors to appropriate transition.

(NARRATIVE ON FOLLOWING PAGE)

DAVIS MONTHAN TWO DEPARTURE (DMA2•DMA)

TUCSON, ARIZONA

Orig 15JUN23

DAVIS-MONTHAN AFB (KDMA)

SW-4, 11 JUL 2024 to 08 AUG 2024

SW-4, 11 JUL 2024 to 08 AUG 2024