

TUCSON, ARIZONA

23222

# HI-ILS or LOC Z RWY 30

LOC I-DMA <b>109.3</b>	APCH CRS <b>305°</b>	Rwy ldg <b>13,645</b> TDZE <b>2704</b> Arprt Elev <b>2704</b>
---------------------------	-------------------------	---

AL-429 [USAF]

DAVIS-MONTHAN AFB (KDMA)

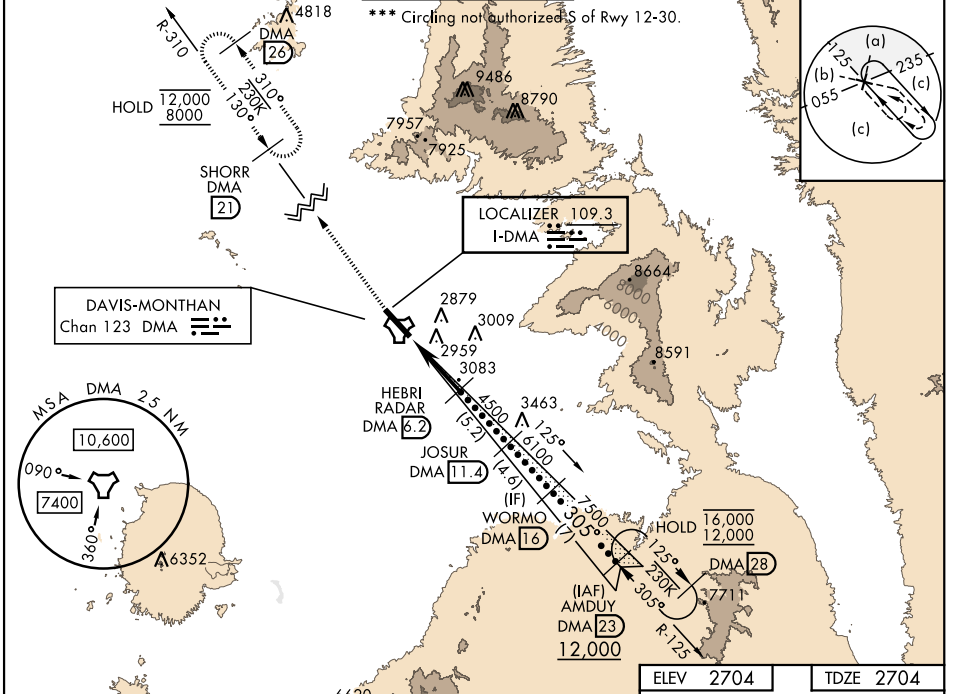
DME or RADAR required.

**▽** \* When ALS inop, increase RVR to 40, vis to 3/4 mile.  
\*\* When ALS inop, increase vis to 2 miles.

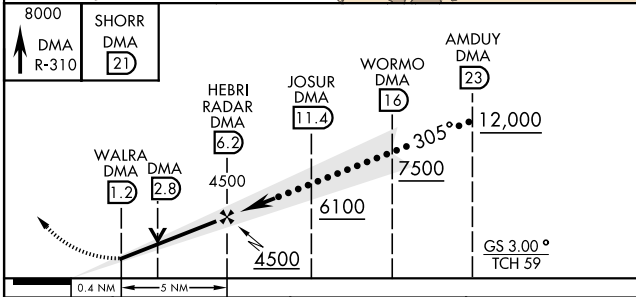


MISSED APPROACH: Climb to 8000, intercept DMA TACAN R-310 to SHORR and hold, continue climb-in-holding to 8000.

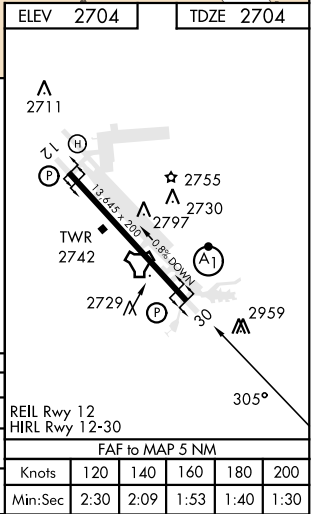
ATIS ★ <b>270.1</b>	TUCSON APP CON 066°-274° <b>119.4 318.1</b> 275°-065° <b>125.1 269.55</b>	TOWER <b>118.85 253.5</b>	GND CON <b>121.8 275.8</b>	CLNC DEL <b>121.8 275.8</b>
------------------------	---	------------------------------	-------------------------------	--------------------------------



EMERG SAFE ALT 100 NM 17,000



CATEGORY	C	D	E
S-ILS 30 *	2904/24	200	(200-1/2)
S-LOC 30 **	3400-1 1/2	696	(700-1 1/2)
CIRCLING ***	3400-2 696 (700-2)	3420-2 1/4 716 (800-2 1/4)	3460-2 3/4 756 (800-2 3/4)



TUCSON, ARIZONA

32°10'N-110°53'W

DAVIS-MONTHAN AFB (KDMA)

Amtd 9 10AUG23

# HI-ILS or LOC Z RWY 30

SW-4, 11 JUL 2024 to 08 AUG 2024

SW-4, 11 JUL 2024 to 08 AUG 2024