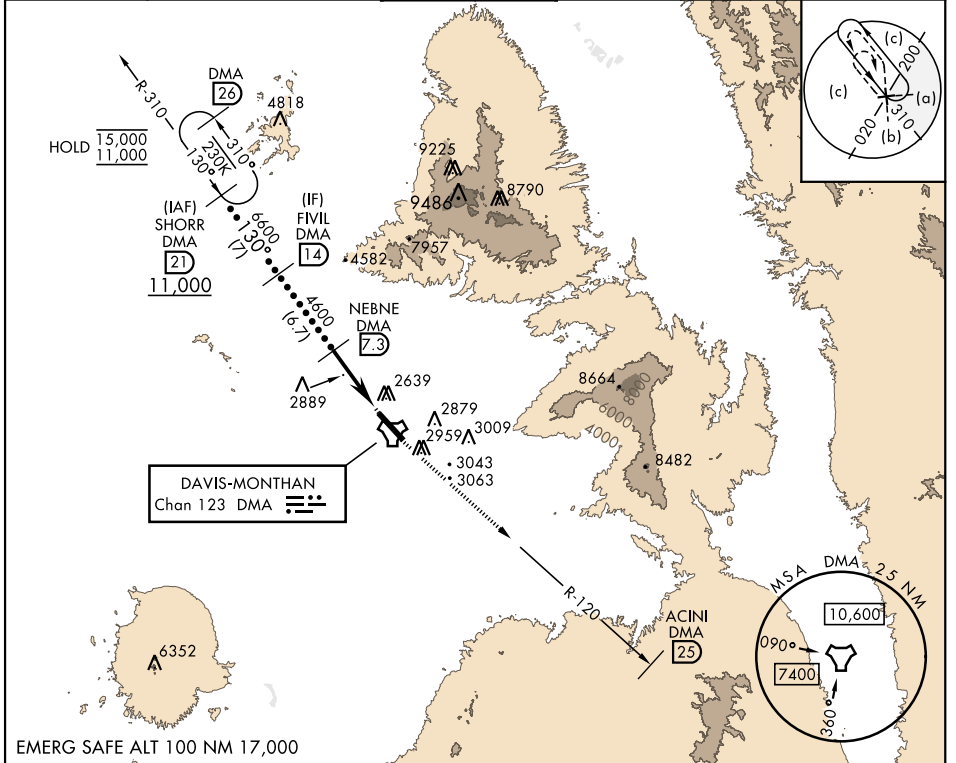


# HI-TACAN Z RWY 12

TACAN DMA Chan <b>123</b>	APCH CRS <b>130°</b>	Rwy Idg <b>13,645</b> TDZE <b>2615</b> Arpt Elev <b>2704</b>	AL-429 [USAF]	DAVIS-MONTHAN AFB (KDMA)
------------------------------	-------------------------	--	---------------	--------------------------

RADAR required * Circling not authorized S of Rwy 12-30.	MISSED APPROACH: Climbing to 8000 intercept DMA TACAN R-120 to ACINI. Expect RADAR vectors.
---	---

ATIS* <b>270.1</b>	TUCSON APP CON <b>125.1 269.55</b> (090° - 285°) <b>119.4 318.1</b> (286° - 089°)	TOWER <b>118.85 253.5</b>	GND CON <b>121.8 275.8</b>	CLNC DEL <b>121.8 275.8</b>
-----------------------	---	------------------------------	-------------------------------	--------------------------------



EMERG SAFE ALT 100 NM 17,000

SHORR DMA (2) 11,000	FIVIL DMA (14) 6,600	NEBNE DMA (7.3) 4,600	DMA (3.1) 3,170	ESALE DMA (2.1) 2,742	TACAN	8000	ACINI DMA (25)	ELEV 2704	TDZE 2615
						DMA R-120			
CATEGORY	C	D	E						
S-12	3160-1½	545	(500-1½)						
CIRCLING*	3280-1½ 576 (600-1½)	3420-2¼ 716 (800-2¼)	3460-2¾ 756 (800-2¾)						

TUCSON, ARIZONA      32°10'N-110°53'W      DAVIS-MONTHAN AFB (KDMA)

Amdt 9 10AUG23

# HI-TACAN Z RWY 12

SW-4, 11 JUL 2024 to 08 AUG 2024

SW-4, 11 JUL 2024 to 08 AUG 2024