

TUCSON, ARIZONA

ILS or LOC Y RWY 30

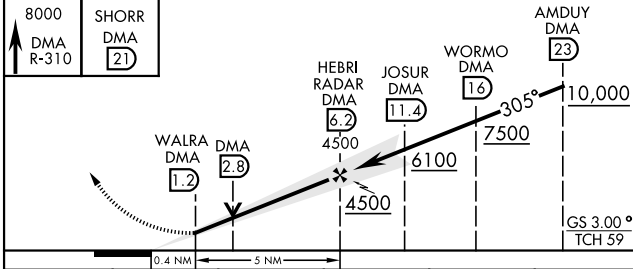
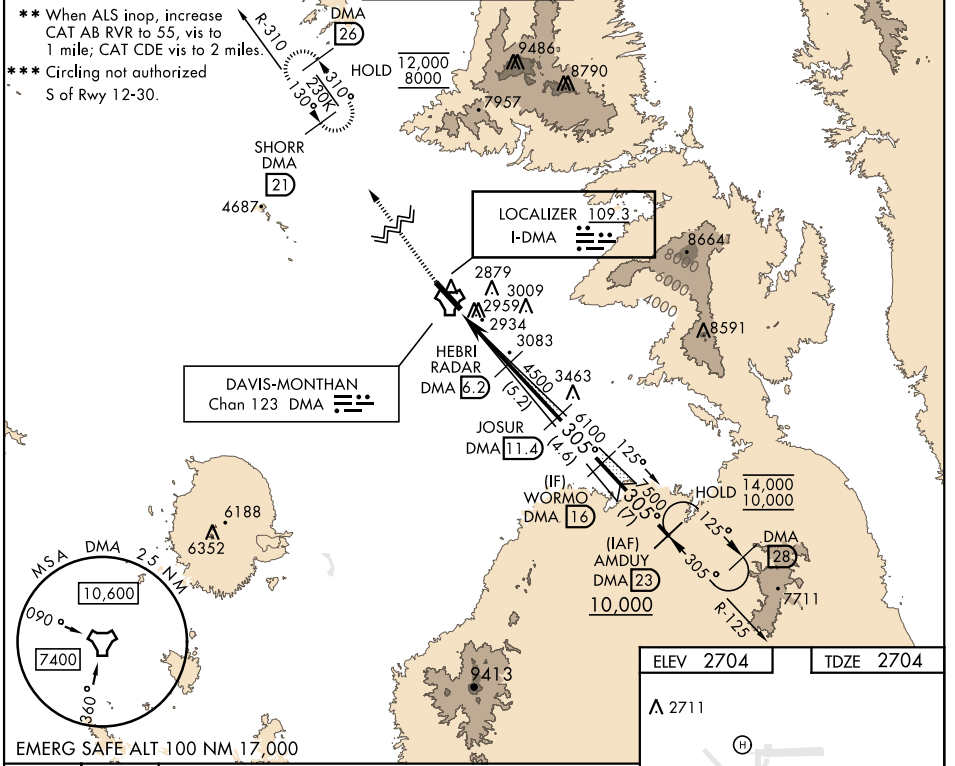
LOC I-DMA 109.3	APCH CRS 305°	Rwy Ldg 13,645 TDZE 2704 Arpt Elev 2704
---------------------------	-------------------------	--

AL-429 [USAF]

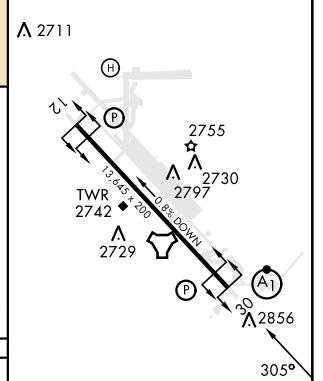
DAVIS-MONTHAN AFB (KDMA)

DME or RADAR required.	ALS-F-1 (A1)	MISSED APPROACH: Climb to 8000, intercept DMA TACAN R-310 to SHORR and hold, continue climb-in-holding to 8000.
------------------------	------------------------	---

ATIS* 270.1	TUCSON APP CON 066°-274° 119.4 318.1 275°-065° 125.1 269.55	TOWER 118.85 253.5	GND CON 121.8 275.8	CLNC DEL 121.8 275.8
-----------------------	---	------------------------------	-------------------------------	--------------------------------



ELEV 2704	TDZE 2704
-----------	-----------



CATEGORY	A	B	C	D	E
S-ILS 30*	2904/24 200 (200-½)				
S-LOC 30**	3400/24 696 (700-½)	3400-1½ 696 (700-1½)			
CIRCLING***	3400-1 696 (700-1)	3400-2 696 (700-2)	3420-2¼ 716 (800-2¼)	3460-2¾ 756 (800-2¾)	

REIL Rwy 12	FAF to MAP 5 NM				
HIRL Rwy 12-30					
Knots	60	90	120	150	180
Min:Sec	5:00	3:20	2:30	2:00	1:40

TUCSON, ARIZONA
Amdt 9 10AUG23

32°10'N-110°53'W

DAVIS-MONTHAN AFB (KDMA)

ILS or LOC Y RWY 30

SW-4, 11 JUL 2024 to 08 AUG 2024

SW-4, 11 JUL 2024 to 08 AUG 2024