

TACAN Y RWY 12

TACAN DMA Chan 123	APCH CRS 130°	Rwy Idg 13,645 TDZE 2615 Arprt Elev 2704
------------------------------	-------------------------	---

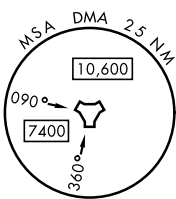
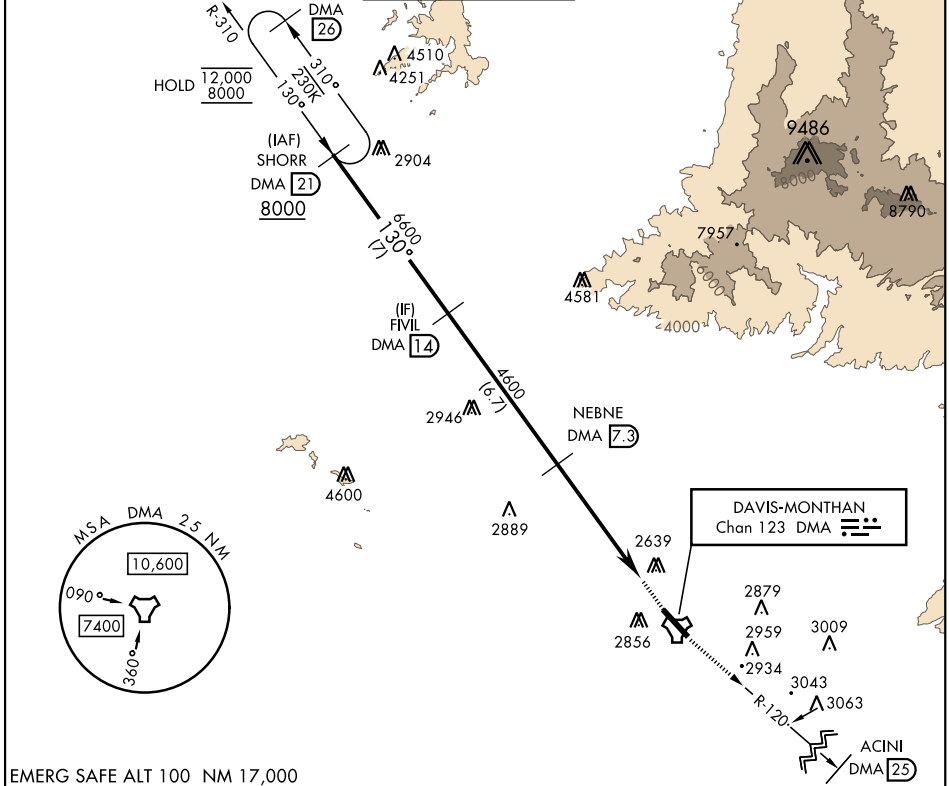
AL-429 [USAF]

DAVIS-MONTHAN AFB (KDMA)

RADAR required	MISSED APPROACH: Climbing to 8000 intercept DMA TACAN R-120 to ACINI. Expect RADAR vectors.
----------------	---

* Circling not authorized S of Rwy 12-30.

ATIS ★ 270.1	TUCSON APP CON 090°-285° 125.1 269.55 286°-089° 119.4 318.1	TOWER 118.85 253.5	GND CON 121.8 275.8	CLNC DEL 121.8 275.8
------------------------	---	------------------------------	-------------------------------	--------------------------------



EMERG SAFE ALT 100 NM 17,000

SHORR DMA 21	FIVIL DMA 14	NEBNE DMA 7.3	ESALE DMA 2.1	ELEV 2704	TDZE 2615		
8000	6600	4600	3.17°	8000 DMA R-120	ACINI DMA 25		
130°			TCH 58				
CATEGORY			A	B	C	D	E
S-12	3160/55 545 (500-1)		3160-1½		545	(500-1½)	
CIRCLING*	3200-1 496 (500-1)		3280-1½ 576 (600-1½)		3420-2¼ 716 (800-2¼)	3460-2¾ 756 (800-2¾)	
TUCSON, ARIZONA						DAVIS-MONTHAN AFB (KDMA)	
Amdt 9 10AUG23						TACAN Y RWY 12	

TUCSON, ARIZONA 32°10'N-110°53'W DAVIS-MONTHAN AFB (KDMA)

TACAN Y RWY 12

SW-4, 11 JUL 2024 to 08 AUG 2024

SW-4, 11 JUL 2024 to 08 AUG 2024