

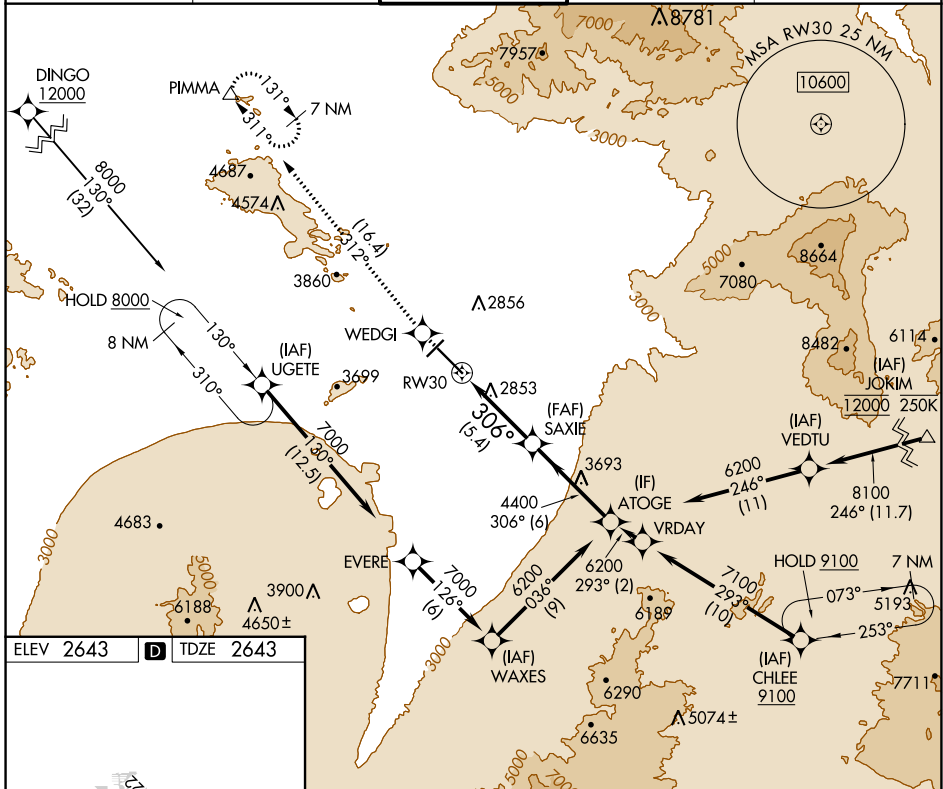
APP CRS	Rwy Idg	<b>10996</b>
<b>306°</b>	TDZE	<b>2643</b>
	Apt Elev	<b>2643</b>

# RNAV (RNP) Y RWY 30

TUCSON INTL (TUS)

RNP AR APCH - GPS.	MISSED APPROACH: Climb to 6800 direct WEDGI and on track 312° to PIMMA and hold.
▼ For uncompensated Baro-VNAV systems, procedure NA below -2°C or above 54°C.	

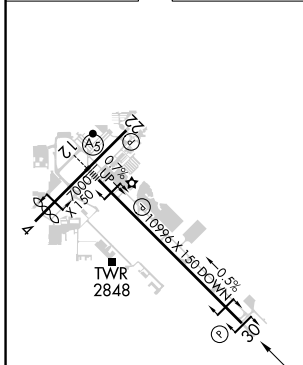
ATIS <b>123.8 279.65</b>	TUCSON APP CON <b>119.4 318.1</b>	TUCSON TOWER <b>118.3 257.8</b>	GND CON <b>120.025 348.6</b>	CLNC DEL <b>126.65 326.2</b>
-----------------------------	--------------------------------------	------------------------------------	---------------------------------	---------------------------------



SW-4, 11 JUL 2024 to 08 AUG 2024

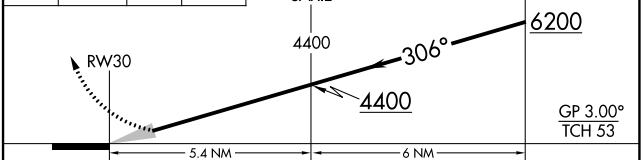
SW-4, 11 JUL 2024 to 08 AUG 2024

ELEV 2643	<b>D</b>	TDZE 2643
-----------	----------	-----------



HIRL Rwy 12-30	MIRL Rwy 4-22	REIL Rwy 22 and 30
----------------	---------------	--------------------

6800	WEDGI	PIMMA	VGSI and RNAV glidepath not coincident (VGSI Angle 3.00/TCH 81).
↑	◆	tr 312°	△



CATEGORY	A	B	C	D
RNP 0.30 DA	3062-1½ 419 (500-1½)			

## AUTHORIZATION REQUIRED