

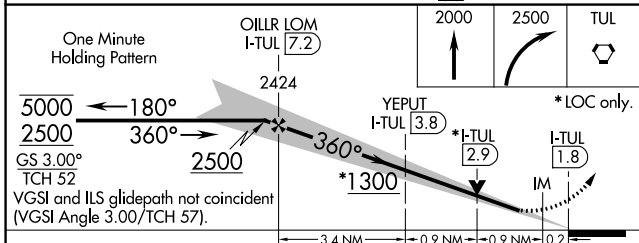
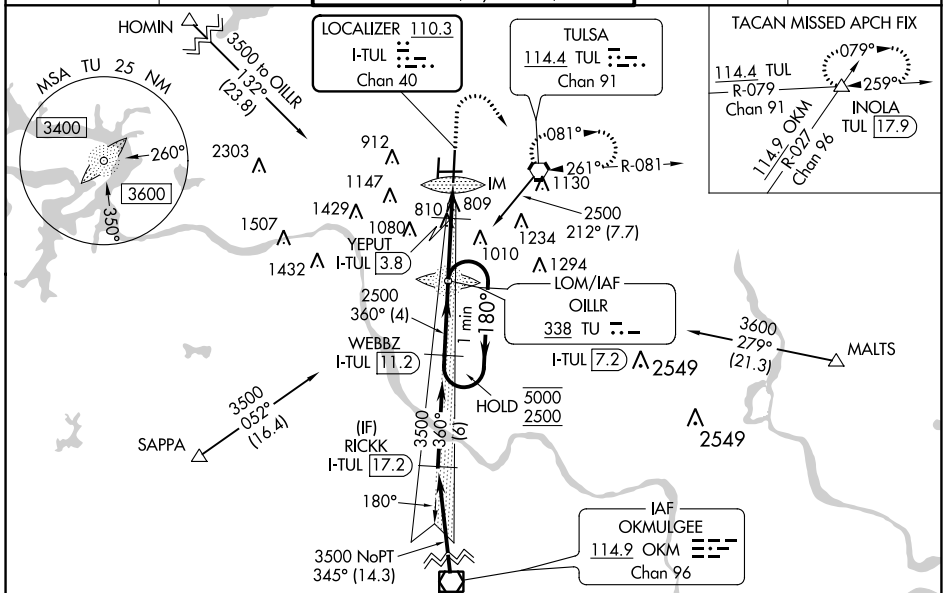
LOC/DME I-TUL <b>110.3</b> Chan <b>40</b>	APP CRS <b>360°</b>	Rwy Idg <b>10000</b> TDZE <b>650</b> Apt Elev <b>678</b>
---	------------------------	--

# ILS or LOC RWY 36R

TULSA INTL (TUL)

ADF or DME required for procedure entry.	ALS-F-2 	MISSED APPROACH: Climb to 2000 then climbing right turn to 2500 direct TUL VORTAC and hold. (TACAN aircraft climb to 2000 then climbing right turn to 3500 via TUL VORTAC R-079 to INOLA INT/17.9 DME and hold E, RT, 259° inbound).
--	-------------	--

D-ATIS <b>124.9 377.2</b>	TULSA APP CON <b>124.0 338.3</b>	TULSA TOWER <b>121.2 310.8</b> (Rwys 18L-36R, 8-26) <b>118.7 257.8</b> (Rwy 18R-36L)	GND CON <b>121.9 348.6</b>	CLNC DEL <b>134.05 284.7</b>
------------------------------	-------------------------------------	--	-------------------------------	---------------------------------



ELEV 678	TDZE 650
HIRL Rwys 8-26, 18L-36R and 18R-36L REIL Rwys 8, 18R and 36L TDZ/CL Rwy 36R	
FAF to MAP 5.4 NM	
Knots	60 90 120 150 180
Min:Sec	5:24 3:36 2:42 2:10 1:48

CATEGORY	A	B	C	D	E
S-ILS 36R	850/18 200 (200-½)				
S-LOC 36R	1300/24	650 (700-½)	1300-1¾		650 (700-1¾)
CIRCLING	1300-1	622 (700-1)	1520-2½ 842 (900-2½)	1520-2¾ 842 (900-2¾)	1520-3 842 (900-3)
YEPUT FIX MINIMUMS (DME REQUIRED)					
S-LOC 36R	1060/24	410 (400-½)	1060/40		410 (400-¾)
CIRCLING	1120-1 442 (500-1)	1160-1 482 (500-1)	1520-2½ 842 (900-2½)	1520-2¾ 842 (900-2¾)	1520-3 842 (900-3)

SC-1, 11 JUL 2024 to 08 AUG 2024

SC-1, 11 JUL 2024 to 08 AUG 2024