

# HI-ILS or LOC Z RWY 36R

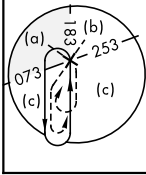
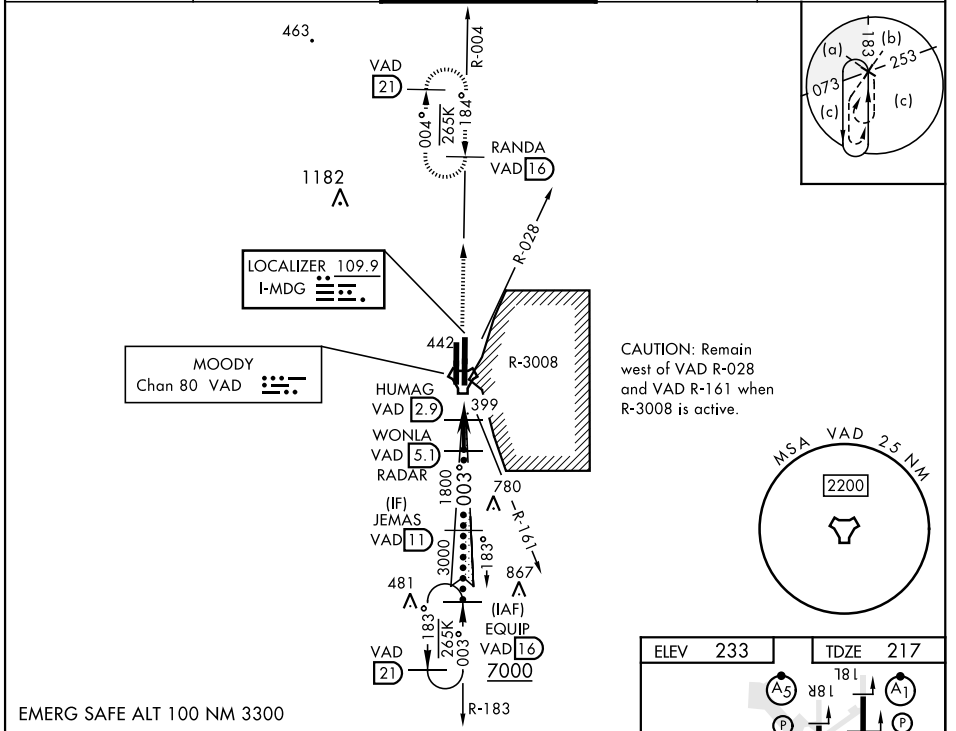
LOC I-MDG <b>109.9</b>	APCH CRS <b>003°</b>	Rwy ldg TDZE Arprt Elev <b>9300</b> <b>217</b> <b>233</b>
---------------------------	-------------------------	--

[USAF]

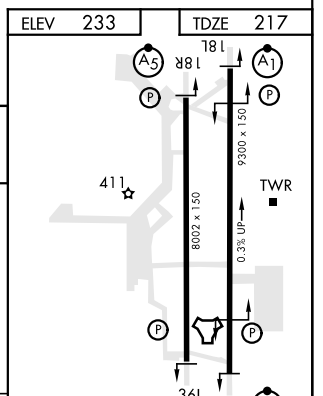
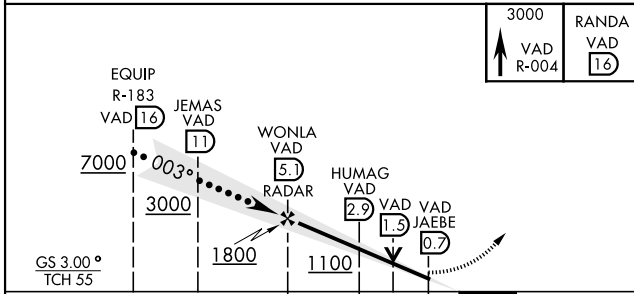
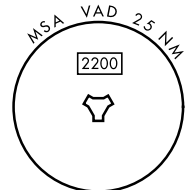
MOODY AFB (KVAD)

RADAR or DME required	ALSIF-1 <b>(A1)</b>	MISSED APPROACH: Climb to 3000 on VAD TACAN R-004 to RANDA and hold.
-----------------------	------------------------	--

ATIS ★ <b>273.5</b>	VALDOSTA APP CON <b>126.6 285.6</b>	TOWER ★ <b>128.45</b> (CTAF) <b>257.625</b>	GND CON <b>138.95 275.8</b>	CLNC DEL <b>120.625 296.7</b>
------------------------	--	--	--------------------------------	----------------------------------



CAUTION: Remain west of VAD R-028 and VAD R-161 when R-3008 is active.



EMERG SAFE ALT 100 NM 3300		ELEV 233	TDZE 217
CATEGORY	C	D	E
S-ILS 36R *	417/24	200	(200-1/2)
S-LOC 36R **	660/45	443	(500-1/2)
CIRCLING	760-1 1/2 527 (600-1 1/2)	800-2 567 (600-2)	
HIRL all rwy			
FAF to MAP 4.3 NM			
Knots	120	140	160 180 200
Min:Sec	2:09	1:51	1:37 1:26 1:17

# HI-ILS or LOC Z RWY 36R

SE-4, 11 JUL 2024 to 08 AUG 2024

SE-4, 11 JUL 2024 to 08 AUG 2024