

# ILS or LOC Y RWY 36R

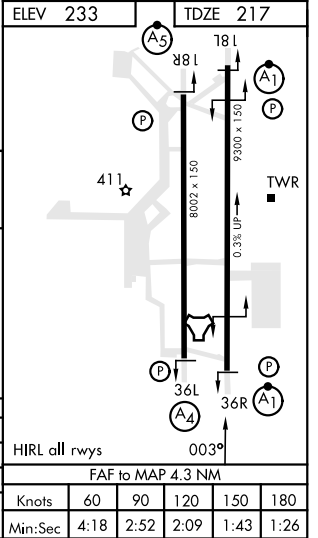
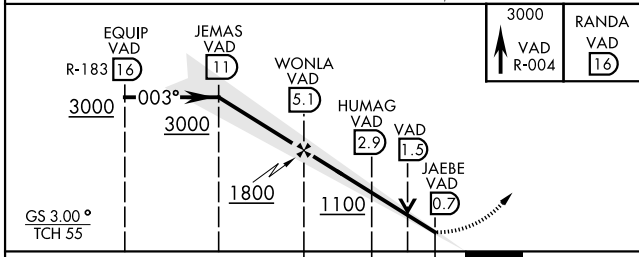
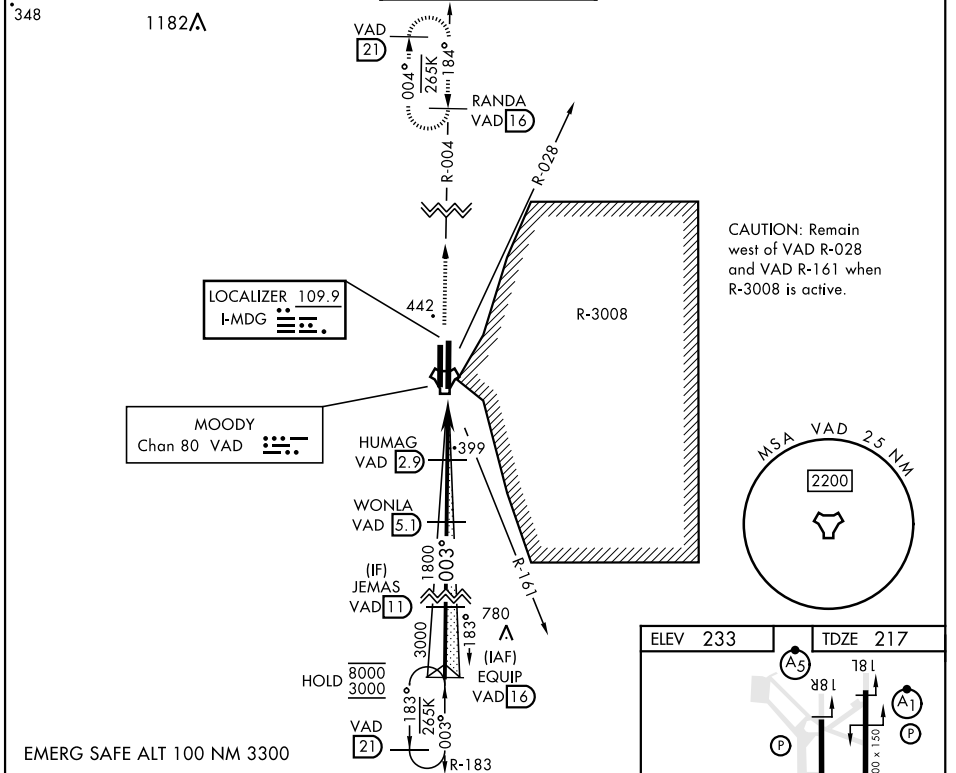
LOC I-MDG <b>109.9</b>	APCH CRS <b>003°</b>	Rwy Idg TDZE Arprt Elev <b>9300</b> <b>217</b> <b>233</b>
---------------------------	-------------------------	--

[USAF]

MOODY AFB (KVAD)

RADAR or DME required	ALSIF-1 	MISSED APPROACH: Climb to 3000 on VAD TACAN R-004 to RANDA and hold.
<p>▼ * When ALS inop, increase RVR to 40 and vis to 3/4 mile.                  ** When ALS inop, increase RVR CAT AB to 55 and vis to 1 mile, RVR CAT CDE vis to 1 3/8 miles.</p>		

ATIS ★ <b>273.5</b>	VALDOSTA APP CON <b>126.6 285.6</b>	TOWER ★ <b>128.45</b> (CTAF) <b>257.625</b>	GND CON <b>138.95 275.8</b>	CLNC DEL <b>120.625 296.7</b>
------------------------	--	--	--------------------------------	----------------------------------



CATEGORY	A	B	C	D	E
S-ILS 36R*	417/24		200	[200-1/2]	
S-LOC 36R**	660/24	443 (500-1/2)	660/45	443 (500-7/8)	
CIRCLING	760-1	527 (600-1)	760-1/2	527 (600-1/2)	800-2 567 (600-2)

# ILS or LOC Y RWY 36R

SE-4, 11 JUL 2024 to 08 AUG 2024

SE-4, 11 JUL 2024 to 08 AUG 2024