

# TACAN Y RWY 18R

TACAN VAD Chan <b>80</b>	APCH CRS <b>180°</b>	Rwy Idg TDZE Arprt Elev <b>8002</b> <b>231</b> <b>233</b>	[USAF]	MOODY AFB (KVAD)
-----------------------------	-------------------------	--	--------	------------------

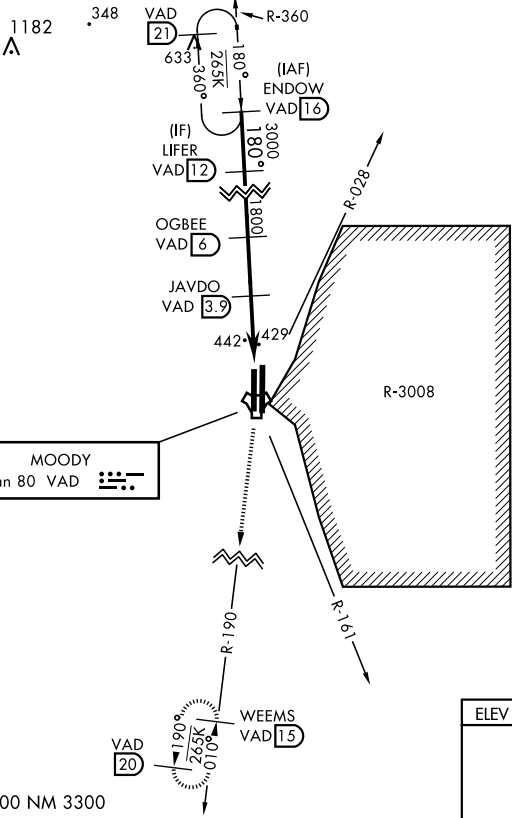
**▼** \* When ALS inop, increase CAT AB RVR to 55 and vis to 1 mile, CAT CDE vis to 1 1/2 miles.

MALSR **A5**

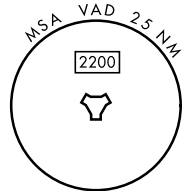
MISSED APPROACH: Climb to 3000 on VAD TACAN R-190 to WEEMS and hold.

ATIS ★ <b>273.5</b>	VALDOSTA APP CON <b>126.6 285.6</b>	TOWER ★ 128.45 (CTAF) <b>257.625</b>	GND CON <b>138.95 275.8</b>	CLNC DEL <b>120.625 296.7</b>
------------------------	--	---	--------------------------------	----------------------------------

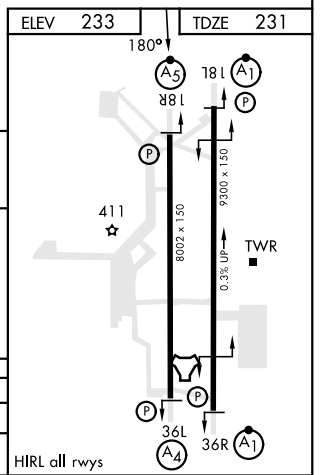
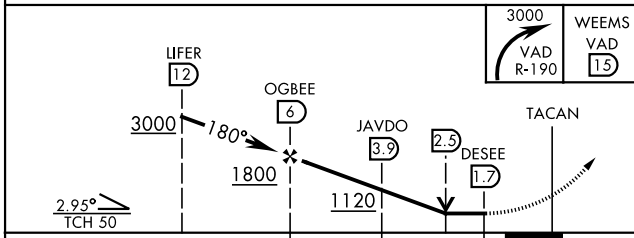
Rwy 18R helicopter visibility reduction below RVR 4000 not authorized.



CAUTION: Remain west of VAD R-028 and VAD R-161 when R-3008 is active.



EMERG SAFE ALT 100 NM 3300



CATEGORY	A	B	C	D	E
S-18R *	700/40 469 (500-3/4)		700/50 469 (500-1)		
☉ CIRCLING	760-1 527 (600-1)		760-1 1/2 527 (600-1 1/2)	800-2 567 (600-2)	

# TACAN Y RWY 18R

SE-4, 11 JUL 2024 to 08 AUG 2024

SE-4, 11 JUL 2024 to 08 AUG 2024