

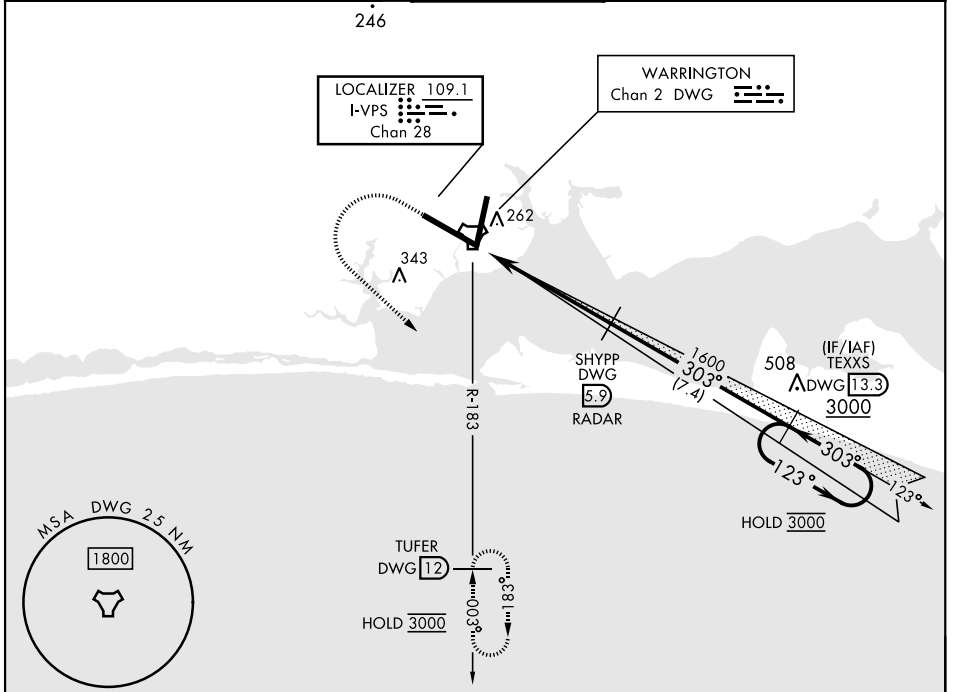
# ILS or LOC Y RWY 30

LOC/DME I-VPS <b>109.1</b> Chan <b>28</b>	APCH CRS <b>303°</b>	Rwy Idg <b>12,004</b> TDZE <b>68</b> Arprt Elev <b>84</b>
---	-------------------------	---

[USAF] EGLIN AFB DESTIN FORT WALTON BEACH (KVPS)

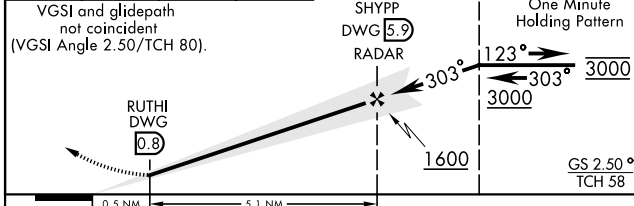
DME required	ALSF-1 	MISSED APPROACH: Climb to 600, then climbing left turn to 3000 and intercept DWG TACAN R-183 to TUFER/12 DME and hold.
<p>*When ALS inop, increase RVR to 40, vis to 3/4 mile.                  **When ALS inop increase CAT AB RVR to 55, vis to 1 mile;                  CAT CDE RVR to 50, vis to 1 mile.</p>		

ATIS ★ <b>134.625 273.5</b>	APP CON <b>125.1 281.45 271°-089°</b> <b>132.1 360.6 090°-270°</b>	TOWER <b>118.2 353.65</b>	GND CON <b>121.8 335.8</b>	CLNC DEL <b>127.7 377.2</b>
--------------------------------	--	------------------------------	-------------------------------	--------------------------------

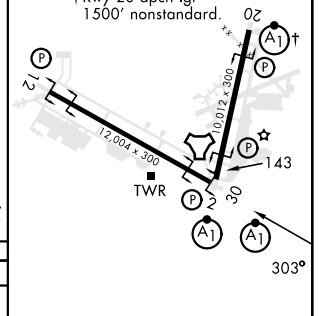


EMERG SAFE ALT 100 NM 3500

600	3000	TUFER DWG <b>12</b>
-----	------	---------------------



ELEV <b>84</b>	TDZE <b>68</b>
----------------	----------------



CATEGORY	A	B	C	D	E
S-ILS 30 *	268/24		200	(200-1/2)	
S-LOC 30 **	400/24	332 (400-1/2)	400/26	332 (400-1/2)	
CIRCLING	600-1	516 (600-1)	680-1 1/2 596 (600-1 1/2)	680-2 596 (600-2)	700-2 1/4 616 (700-2 1/4)

HIRL all rwys					
FAF to MAP 5.1 NM					
Knots	60	90	120	150	180
Min:Sec	5:06	3:24	2:33	2:02	1:42

# ILS or LOC Y RWY 30

SE-3, 11 JUL 2024 to 08 AUG 2024

SE-3, 11 JUL 2024 to 08 AUG 2024