

WAAS CH 53511 W12A	APP CRS 118°	Rwy ldg TDZE Apt Elev	7314 23 24
--	------------------------	-----------------------------	---------------------------------------

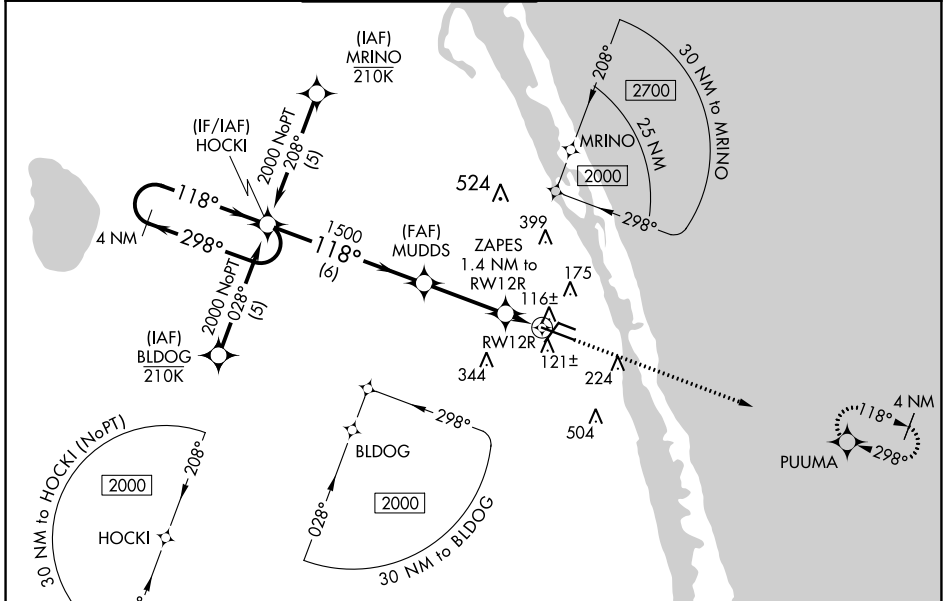
RNAV (GPS) RWY 12R

VERO BEACH RGNL (VRB)

⚠ Circling to Rwy 30R NA at night. Baro-VNAV NA when using Fort Pierce altimeter setting. For uncompensated Baro-VNAV systems, LNAV/VNAV NA below 0°C (32°F) or above 54°C (130°F). DME/DME RNP-0.3 NA. When local altimeter setting not received, use Fort Pierce altimeter setting and increase LPV DA to 302 feet; increase LNAV/VNAV DA to 317 feet; increase all MDAs 40 feet and LNAV Cat C/D visibility 1/8 SM and Circling Cat C/D visibility 1/4 SM.

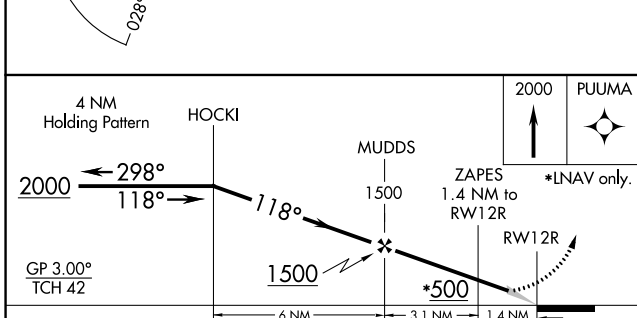
MISSED APPROACH:
Climb to 2000 direct PUUMA and hold.

ATIS 120.575	PALM BEACH APP CON 123,625 225,4 (N)	VERO BEACH TOWER * 126.3 (CTAF) 0	GND CON 127.45	CLNC DEL 134.975	UNICOM 122.95
------------------------	--	---	--------------------------	----------------------------	-------------------------



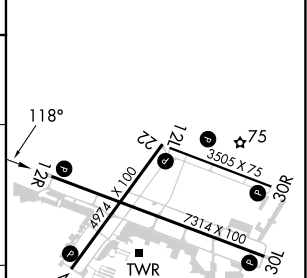
SE-3, 11 JUL 2024 to 08 AUG 2024

SE-3, 11 JUL 2024 to 08 AUG 2024



ELEV 24	D	TDZE 23
---------	---	---------

CATEGORY	A	B	C	D
LPV DA		279-3/4	256 (300-3/4)	
LNAV/VNAV DA		294-7/8	271 (300-7/8)	
LNAV MDA		380-1	357 (400-1)	
CIRCLING	560-1	536 (600-1)	660-1 3/4 636 (700-1 3/4)	820-2 1/2 796 (800-2 1/2)



MIRL Rwy 4-22, 12R-30L, and 12L-30R
REIL Rwy 4, 12R, 22 and 30L