

LOC/DME I-VCT <b>111.5</b> Chan <b>52</b>	APP CRS <b>128°</b>	Rwy Idg <b>9111</b> TDZE <b>115</b> Apt Elev <b>115</b>
---	------------------------	---

# ILS or LOC RWY 13

VICTORIA RGNL (VCT)

DME required.

**▽**  
**▲**

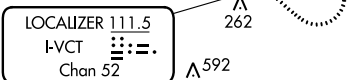
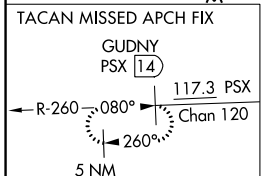
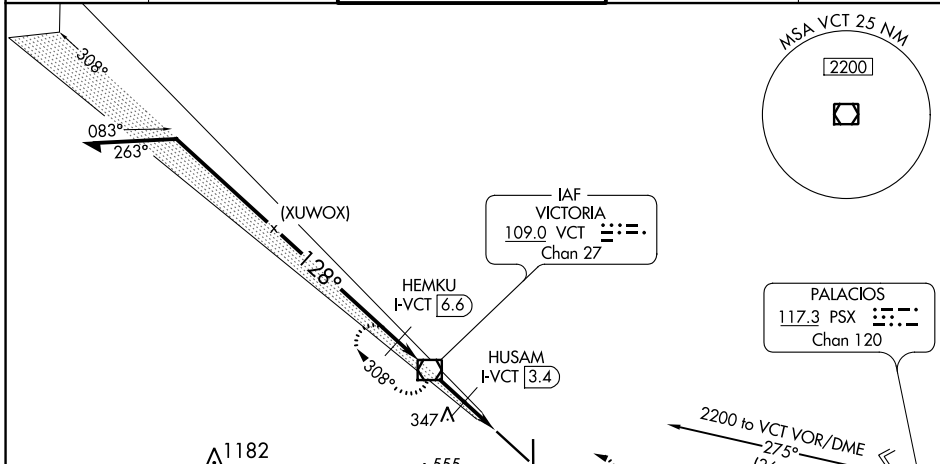
For inop ALS, increase S-ILS 13 Cat E visibility to ¾ SM and S-LOC 13 Cat E visibility to 1 SM.

MALSR

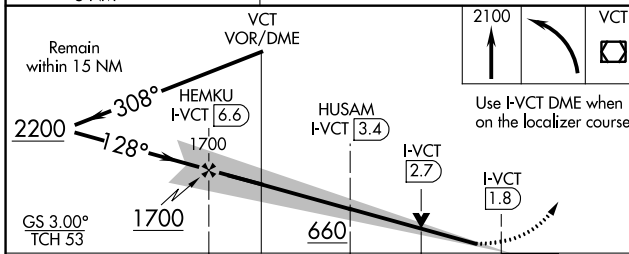


MISSED APPROACH: Climb to 2100 then left turn direct VCT VOR/DME and hold. (TACAN aircraft climb to 2100 then left turn on heading 120° and on PSX VORTAC R-260 to GUDNY/PSX 14 DME and hold W, RT, 080° inbound).

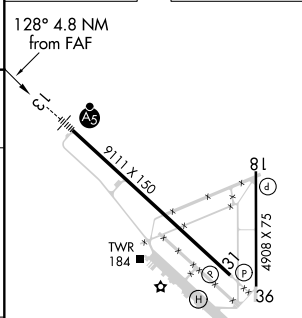
ATIS <b>119.025</b>	HOUSTON CENTER <b>135.05 353.6</b>	VICTORIA TOWER ★ <b>126.075</b> (CTAF) <b>257.95</b>	GND CON <b>120.525 239.25</b>	UNICOM <b>122.7</b>
------------------------	---------------------------------------	---	----------------------------------	------------------------



Procedure NA for arrival on PSX VORTAC airway radials 218 CW 233.



ELEV 115	<b>D</b>	TDZE 115
----------	----------	----------



CATEGORY	A	B	C	D	E
S-ILS 13		315-½	200 (200-½)		
S-LOC 13		440-½	325 (400-½)		
<b>C</b> CIRCLING	580-1	465 (500-1)	820-2 705 (800-2)	880-2½ 765 (800-2½)	NA

MIRL Rwy 18-36  
REIL Rwy 18 and 36  
HIRL Rwy 13-31 **Ⓛ**

SC-5, 11 JUL 2024 to 08 AUG 2024

SC-5, 11 JUL 2024 to 08 AUG 2024