

| | | |
|---|------------------------|---|
| VORTAC ACT 115.3 Chan 100 | APP CRS 141° | Rwy Idg 5103 TDZE 513 Apt Elev 516 |
|---|------------------------|---|

VOR RWY 14

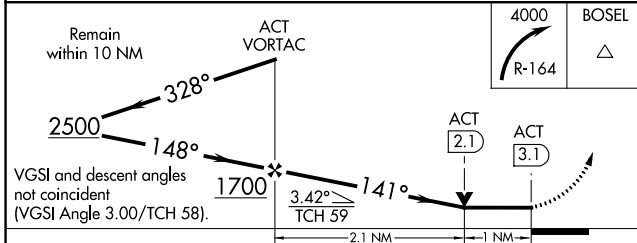
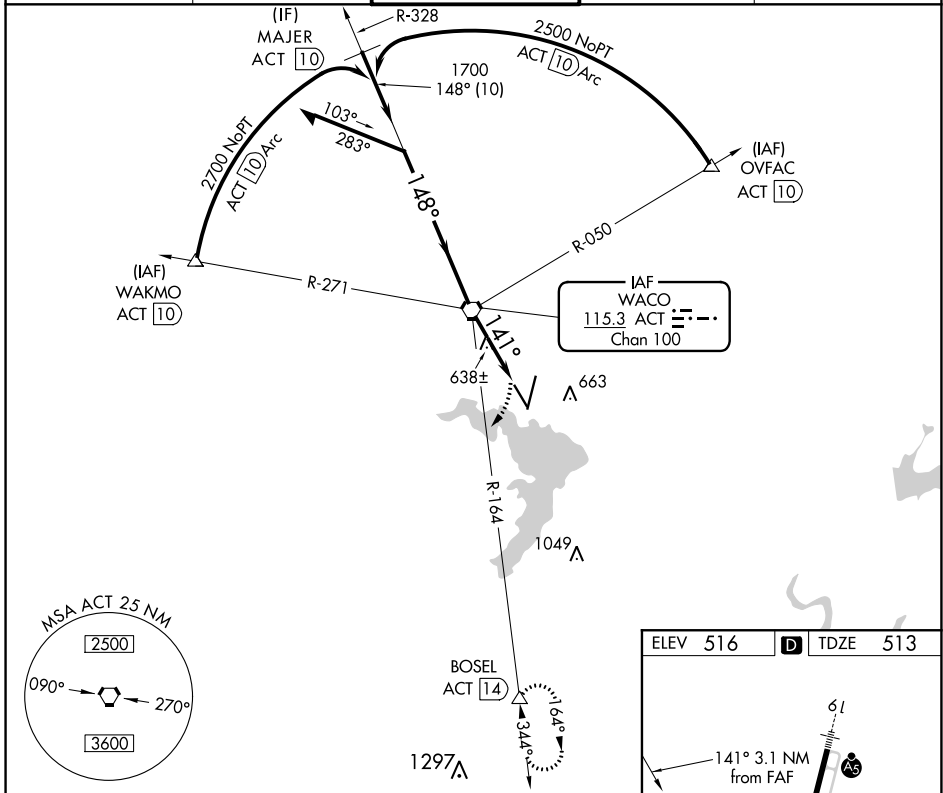
WACO RGNL (ACT)

DME required.

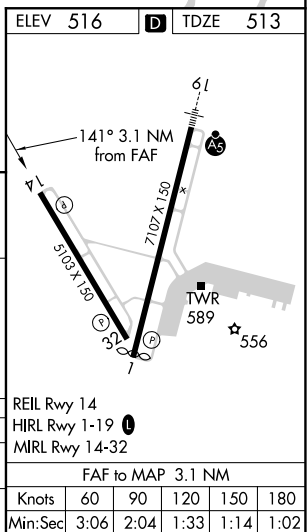
ASR Rwy 14 helicopter visibility reduction below 3/4 SM NA. VDP NA with Mc Gregor Exec altimeter setting. When local altimeter setting not received, use Mc Gregor Exec altimeter setting and increase all MDAs 40 feet; and increase S-14 Cat C/D visibility 1/2 SM and Circling Cat D visibility 1/4 SM.

MISSED APPROACH: Climbing right turn to 4000 on ACT VORTAC R-164 to BOSEL/ACT 14.00 DME and hold, Continue climb-in-hold to 4000.

| | | | | |
|-----------------------|---|--|-------------------------|-------------------------|
| ATIS 123.85 | WACO APP CON * 127.65 227.125 | WACO TOWER * 119.3(CTAF) 257.8 | GND CON 121.9 | UNICOM 122.95 |
|-----------------------|---|--|-------------------------|-------------------------|



| CATEGORY | A | B | C | D |
|----------|----------------------|----------------------|-------------------------------|-----------------------|
| S-14 | 900-1 | 387 (400-1) | 900-1 1/2 | 387 (400-1 1/2) |
| CIRCLING | 940-1 424 (500-1) | 980-1 464 (500-1) | 1020-1 1/2 504 (600-1 1/2) | 1160-2 644 (700-2) |



SC-3, 11 JUL 2024 to 08 AUG 2024

SC-3, 11 JUL 2024 to 08 AUG 2024