

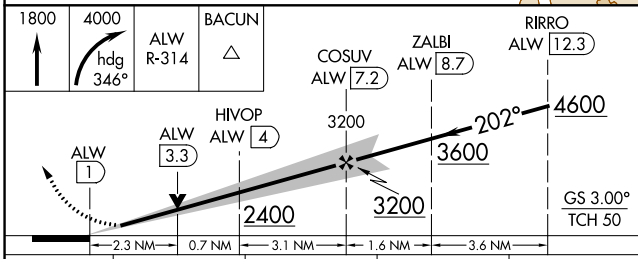
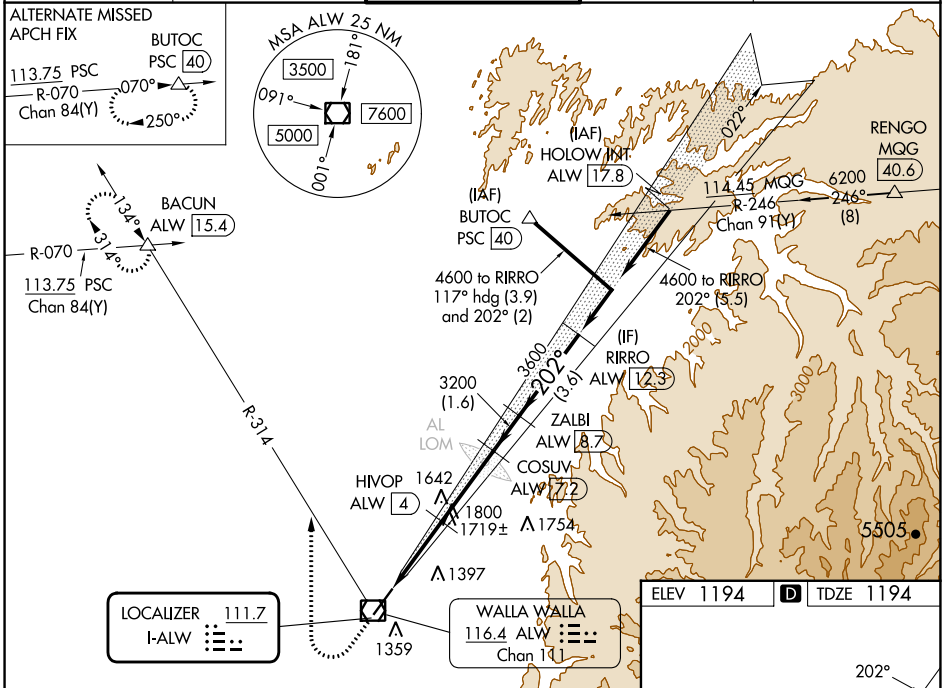
LOC I-ALW <b>111.7</b>	APP CRS <b>202°</b>	Rwy Ldg TDZE Apt Elev	<b>6527</b> <b>1194</b> <b>1194</b>
---------------------------	------------------------	-----------------------------	-------------------------------------------

# ILS or LOC RWY 20

WALLA WALLA RGNL (ALW)

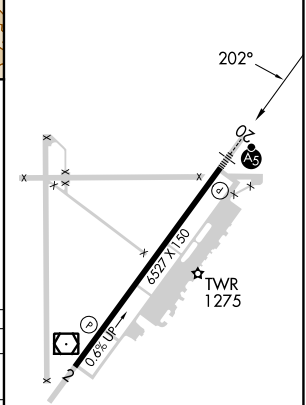
DME required.	MALS R	MISSED APPROACH: Climb to 1800 then climbing right turn to 4000 on heading 346° and ALW VOR/DME R-314 to BACUN INT/ALW 15.4 DME and hold.
<p><b>▽</b> DME from ALW VOR/DME. Simultaneous reception of I-ALW and ALW VOR/DME required. For inop ALS, increase S-LOC 20 Cat C/D visibility to 2½ SM.</p> <p><b>⚠</b> #RVR 1800 authorized with use of FD or AP or HUD to DA (NA when using Pendleton altimeter setting).</p>		

ASOS <b>135.875</b>	SPOKANE APP CON * <b>133.15 379.15</b>	WALLA WALLA TOWER * <b>118.5 (CTAF) 289.4</b>	GND CON <b>121.6 289.4</b>	UNICOM <b>122.95</b>
------------------------	-------------------------------------------	--------------------------------------------------	-------------------------------	-------------------------



CATEGORY	A	B	C	D
S-ILS 20#	1394/24		200 (200-½)	
S-LOC 20	1980/24 786 (800-½)	1980/40 786 (800-¾)	1980-1¾ 786 (800-1¾)	
CIRCLING	1980-1 786 (800-1)	1980-1¼ 786 (800-1¼)	2120-2¾ 926 (1000-2¾)	2300-3 1106 (1200-3)

ELEV 1194	TDZE 1194
-----------	-----------



REIL Rwy 2	HIRL Rwy 2-20
------------	---------------

NW-1, 11 JUL 2024 to 08 AUG 2024

NW-1, 11 JUL 2024 to 08 AUG 2024