

WAAS CH 72805 W02A	APP CRS 022°	Rwy Idg TDZE 1175 Apt Elev 1194	6527
--	------------------------	---	-------------

RNAV (GPS) RWY 2

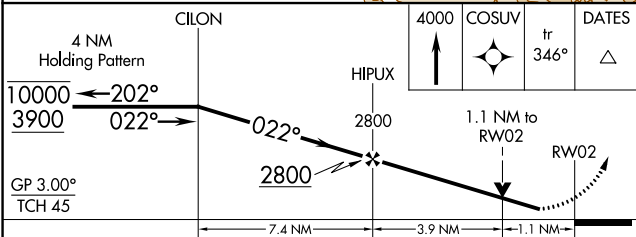
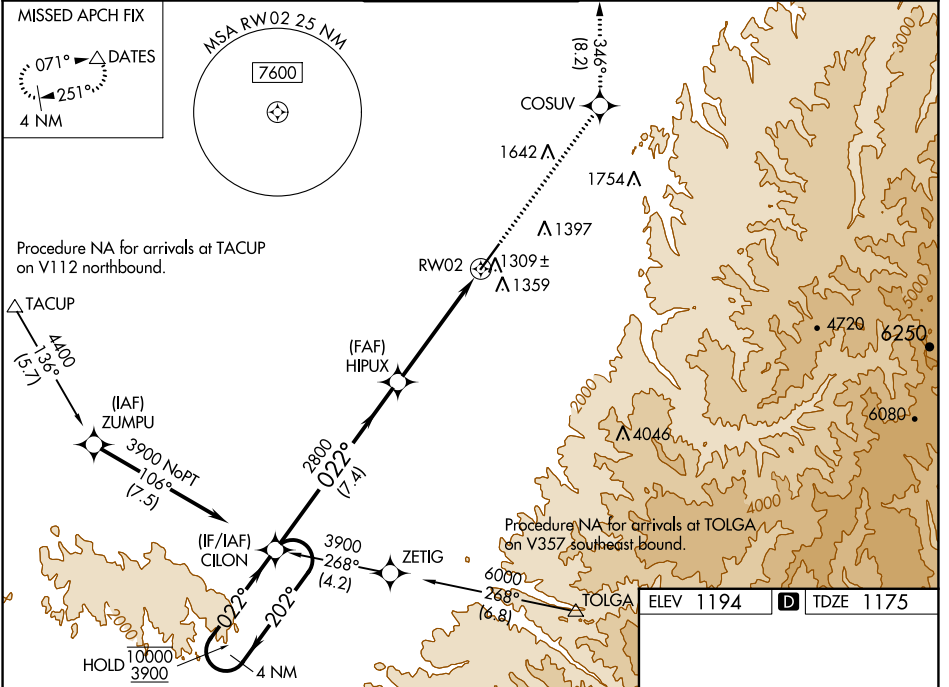
WALLA WALLA RGNL (ALW)

RNP APCH - GPS.

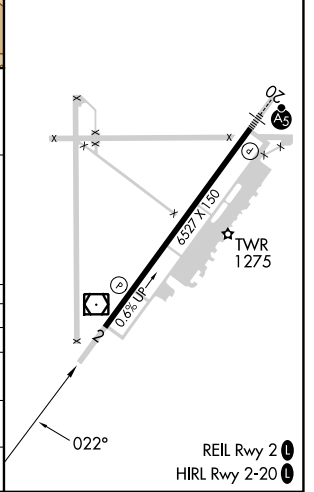
⚠ Rwy 2 helicopter visibility reduction below 3/4 SM NA. For uncompensated Baro-VNAV systems, LNAV/VNAV NA below -11°C or above 54°C.

MISSED APPROACH: Climb to 4000 direct COSUV and on track 346° to DATES and hold.

ASOS 135.875	SPOKANE APP CON * 133.15 379.15	WALLA WALLA TOWER * 118.5 (CTAF) 289.4	GND CON 121.6 289.4	UNICOM 122.95
------------------------	---	--	-------------------------------	-------------------------



ELEV 1194	D TDZE 1175
-----------	--------------------



CATEGORY	A	B	C	D
LPV DA		1375-3/4	200 (200-3/4)	
LNAV/VNAV DA		1511-1	336 (400-1)	
LNAV MDA	1560-1	385 (400-1)	1560-1 1/8	385 (400-1 1/8)
C CIRCLING	1760-1 566 (600-1)	1820-1 626 (700-1)	2120-2 3/4 926 (1000-2 3/4)	2300-3 1106 (1200-3)

NW-1, 11 JUL 2024 to 08 AUG 2024

NW-1, 11 JUL 2024 to 08 AUG 2024