

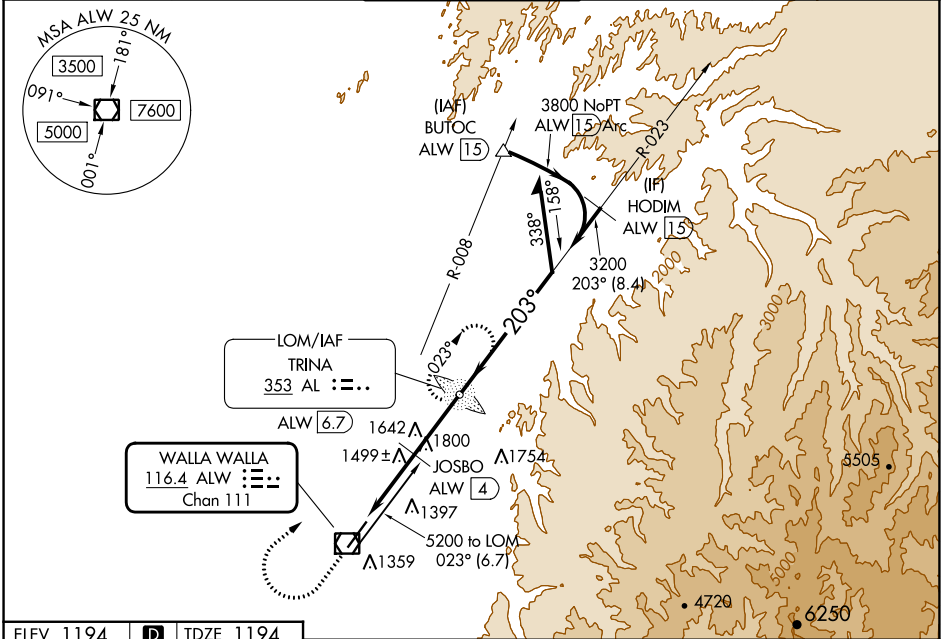
VOR/DME ALW <b>116.4</b> Chan <b>111</b>	APP CRS <b>203°</b>	Rwy Idg <b>6527</b> TDZE <b>1194</b> Apt Elev <b>1194</b>
--	------------------------	---

# VOR RWY 20

WALLA WALLA RGNL (ALW)

ADF required.	MALSR	MISSED APPROACH: Climb to 2300 then climbing right turn to 5100 direct TRINA LOM/ALW 6.7 DME and hold, continue climb-in-hold to 5100.
<p>▲ NA For inop ALS, increase JOSBO fix minimums S-20 Cats C/D visibility to 1 3/8 SM.</p>		

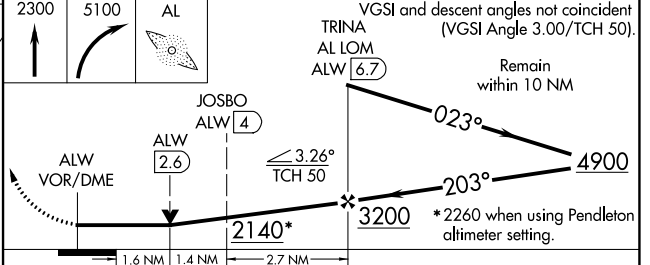
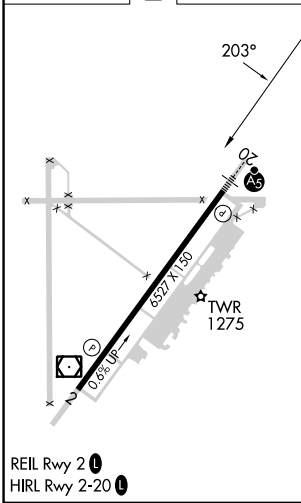
ASOS <b>135.875</b>	SPOKANE APP CON* <b>133.15 379.15</b>	WALLA WALLA TOWER* <b>118.5 (CTAF) 289.4</b>	GND CON <b>121.6 289.4</b>	UNICOM <b>122.95</b>
------------------------	--	---	-------------------------------	-------------------------



NW-1, 11 JUL 2024 to 08 AUG 2024

NW-1, 11 JUL 2024 to 08 AUG 2024

ELEV 1194	<b>D</b>	TDZE 1194
-----------	----------	-----------



CATEGORY	A	B	C	D
S-20	2140/40	946 (1000-3/4)	2140-2	946 (1000-2)
<b>C</b> CIRCLING	2140-1 1/4	946 (1000-1 1/4)	2140-2 3/4 946 (1000-2 3/4)	2300-3 1106 (1200-3)
JOSBO FIX MINIMUMS (DME REQUIRED)				
S-20	1760/24	566 (600-1/2)	1760-1 1/4	566 (600-1 1/4)
<b>C</b> CIRCLING	1760-1 566 (600-1)	1820-1 626 (700-1)	2120-2 3/4 926 (1000-2 3/4)	2300-3 1106 (1200-3)