

WAAS CH <b>45825</b> <b>W36A</b>	APP CRS <b>359°</b>	Rwy Idg TDZE Apt Elev	<b>5001</b> <b>274</b> <b>279</b>
--	------------------------	-----------------------------	---

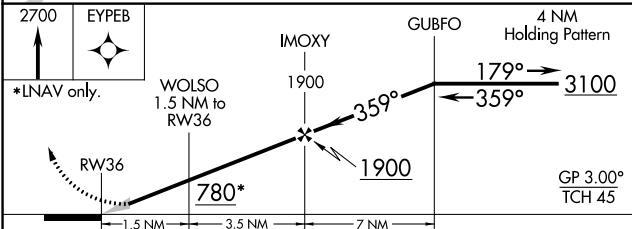
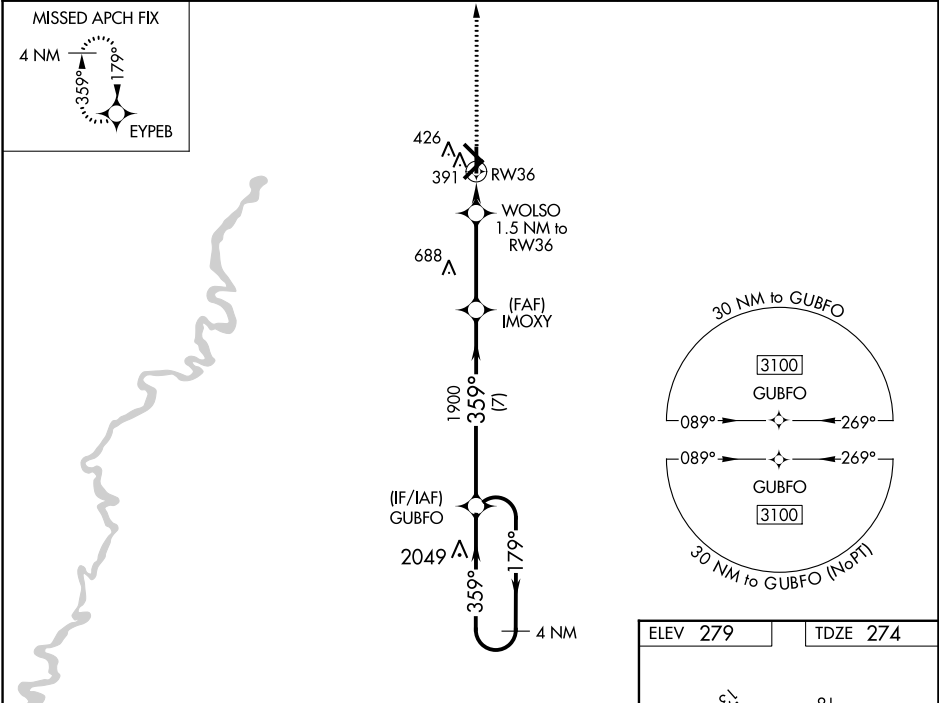
# RNAV (GPS) RWY 36

WALNUT RIDGE RGNL (ARG)

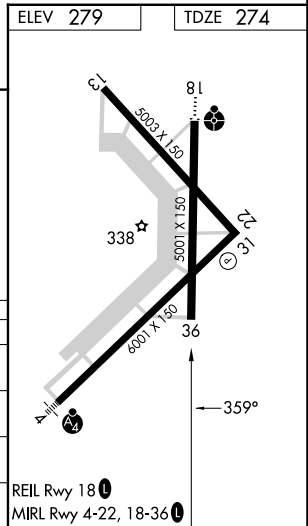
**⚠** Baro-VNAV NA when using Jonesboro altimeter setting. For uncompensated Baro-VNAV systems, LNAV/VNAV NA below -15°C (5°F) or above 42°C (107°F). DME/DME RNP-0.3 NA. When local altimeter setting not received, use Jonesboro altimeter setting and increase LPV DA to 528 feet, LNAV/VNAV DA to 628 feet, and all MDAs 60 feet; increase LNAV Cats C/D and Circling Cat D visibility ¼ SM.

**MISSED APPROACH:**  
Climb to 2700 direct EYPEB and hold.

AWOS-3PT <b>126.525</b>	MEMPHIS CENTER <b>120.075 289.4</b>	UNICOM <b>122.8 (CTAF) 0</b>
----------------------------	--	---------------------------------



CATEGORY	A	B	C	D
LPV DA		474-1	200 (200-1)	
LNAV/VNAV DA		574-1	300 (300-1)	
LNAV MDA	660-1	386 (400-1)	660-1 1/8	386 (400-1 1/8)
CIRCLING	760-1	481 (500-1)	800-1 1/2 521 (600-1 1/2)	1000-2 1/4 721 (800-2 1/4)



SC-1, 11 JUL 2024 to 08 AUG 2024

SC-1, 11 JUL 2024 to 08 AUG 2024