

LOC/DME I-VVWH <b>111.35</b> Chan <b>50(Y)</b>	APP CRS <b>147°</b>	Rwy Idg <b>6869</b> TDZE <b>13</b> Apt Elev <b>14</b>
------------------------------------------------------	------------------------	-------------------------------------------------------------

# LDA Z RWY 19

## RONALD REAGAN WASHINGTON NTL (DCA)

DME required. RADAR required for procedure entry.

MALSF MISSED APPROACH: Climbing right turn to 3000 on DCA VOR/DME R-185 to BADDN/DCA VOR/DME 5.9 DME and hold, continue climb-in-hold to 3000.

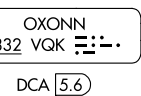
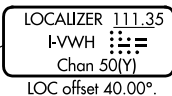
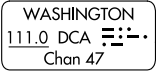
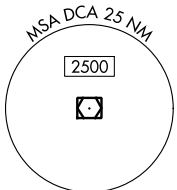
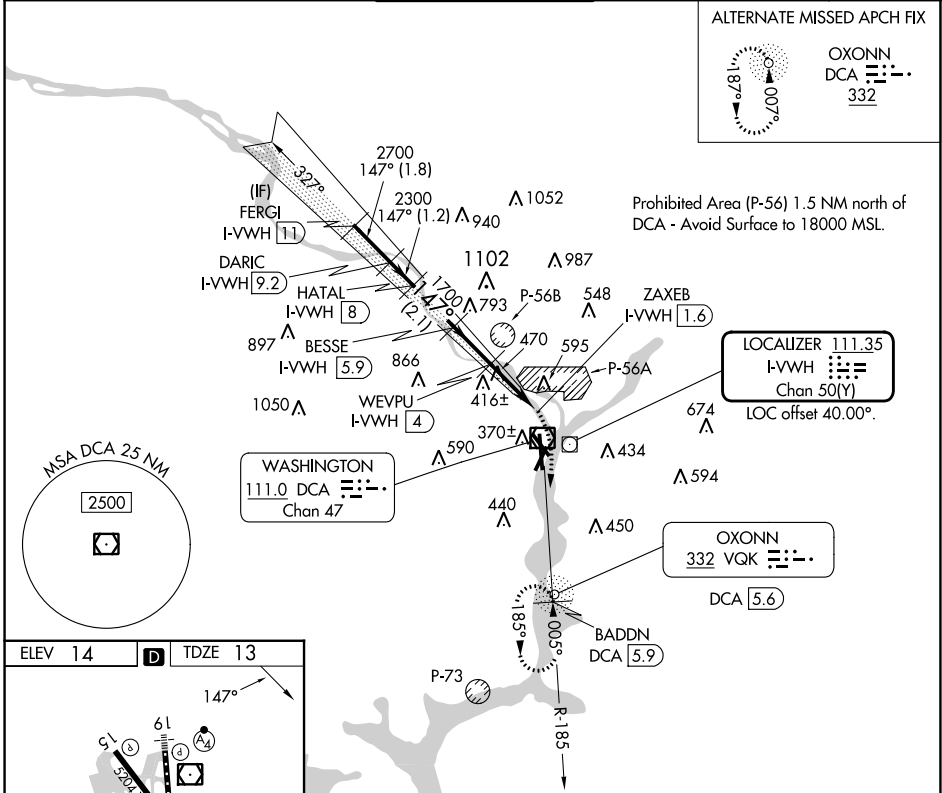
Rwy 19 helicopter visibility reduction below 1 SM NA.  
Circling NA northeast of Rwy 15-33. Inop table does not apply.

D-ATIS <b>132.65</b>	POTOMAC APP CON <b>119.85 239.25 360.8</b> (WEST/SOUTH) (EAST)	WASHINGTON TOWER <b>119.1 257.6</b>	GND CON <b>121.7 257.6</b>	CLNC DEL <b>128.25</b>	CPDLC
-------------------------	-------------------------------------------------------------------------	----------------------------------------	-------------------------------	---------------------------	-------

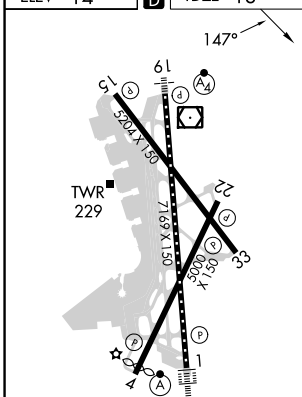
ALTERNATE MISSED APCH FIX



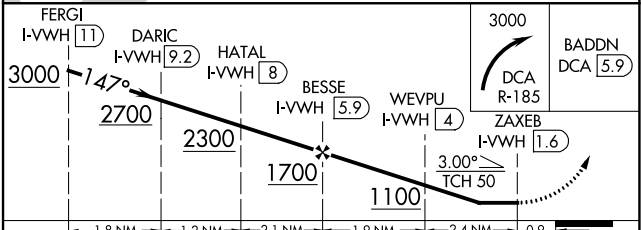
Prohibited Area (P-56) 1.5 NM north of DCA - Avoid Surface to 18000 MSL.



ELEV 14	D	TDZE 13
---------	---	---------



REIL Rws 4, 15, 22 and 33  
TDZ/CL Rwy 1  
HIRL Rws 1-19 and 15-33  
MIRL Rwy 4-22



CATEGORY	A	B	C	D
S-19	780/50 767 (800-1)	780/55 767 (800-1)	780-2½ 767 (800-2½)	
CIRCLING	780-1 766 (800-1)	780-1¼ 766 (800-1¼)	840-2½ 826 (900-2½)	900-3 886 (900-3)

# LDA Z RWY 19

NE-3, 11 JUL 2024 to 08 AUG 2024

NE-3, 11 JUL 2024 to 08 AUG 2024