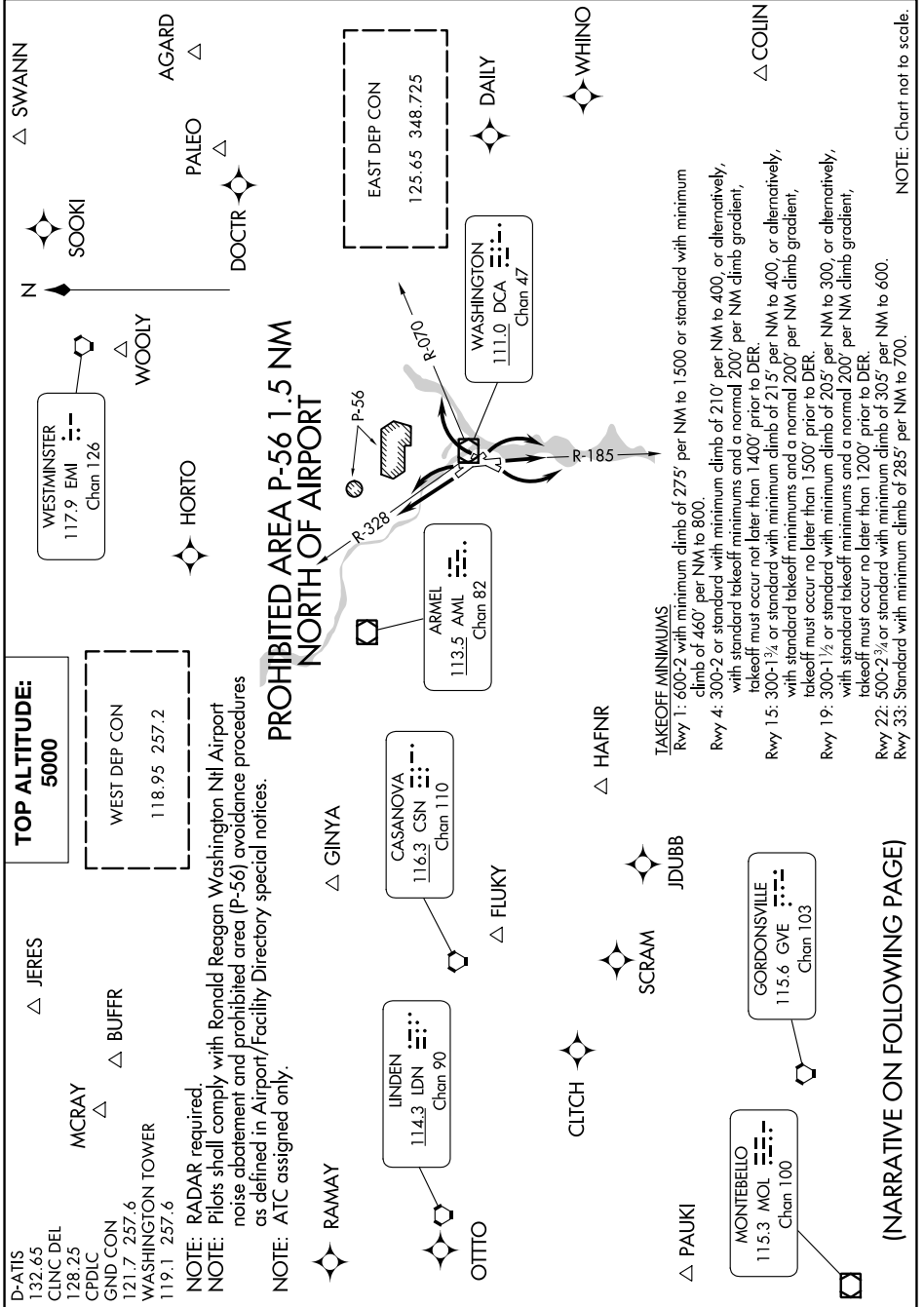


NE-3, 11 JUL 2024 to 08 AUG 2024



TOP ALTITUDE:
5000

WEST DEP CON
118.95 257.2

NOTE: RADAR required.
NOTE: Pilots shall comply with Ronald Reagan Washington Ntl Airport noise abatement and prohibited area (P-56) avoidance procedures as defined in Airport/Facility Directory special notices.
NOTE: ATC assigned only.

PROHIBITED AREA P-56 1.5 NM NORTH OF AIRPORT

TAKEOFF MINIMUMS

Rwy 1: 600-2 with minimum climb of 275' per NM to 1500 or standard with minimum climb of 460' per NM to 800.

Rwy 4: 300-2 or standard with minimum climb of 210' per NM to 400, or alternatively, with standard takeoff minimums and a normal 200' per NM climb gradient, takeoff must occur not later than 1400' prior to DER.

Rwy 15: 300-1½ or standard with minimum climb of 215' per NM to 400, or alternatively, with standard takeoff minimums and a normal 200' per NM climb gradient, takeoff must occur no later than 1300' prior to DER.

Rwy 19: 300-1½ or standard with minimum climb of 205' per NM to 300, or alternatively, with standard takeoff minimums and a normal 200' per NM climb gradient, takeoff must occur no later than 1200' prior to DER.

Rwy 22: 500-2¾ or standard with minimum climb of 305' per NM to 600.

Rwy 33: Standard with minimum climb of 285' per NM to 700.

(NARRATIVE ON FOLLOWING PAGE)

NOTE: Chart not to scale.

NE-3, 11 JUL 2024 to 08 AUG 2024