


WAAS CH <b>86405</b> <b>W20A</b>	APP CRS <b>204°</b>	Rwy Idg TDZE Apt Elev	<b>8919</b> <b>270</b> <b>270</b>
--	------------------------	-----------------------------	---

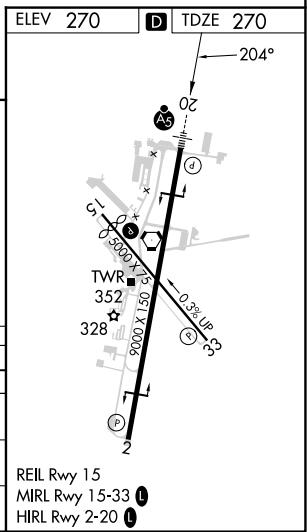
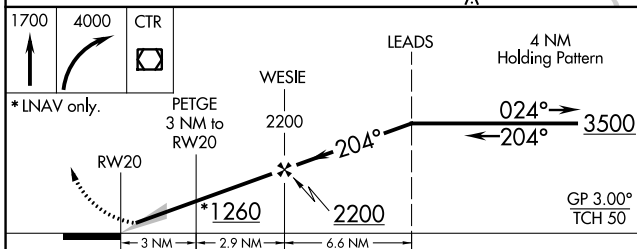
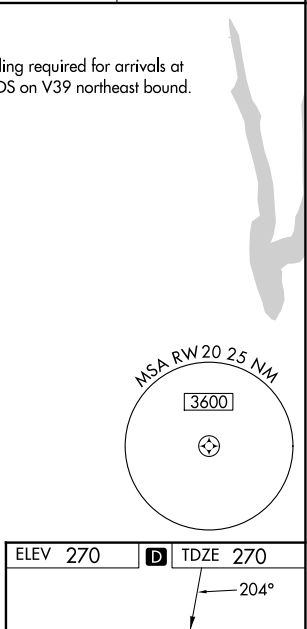
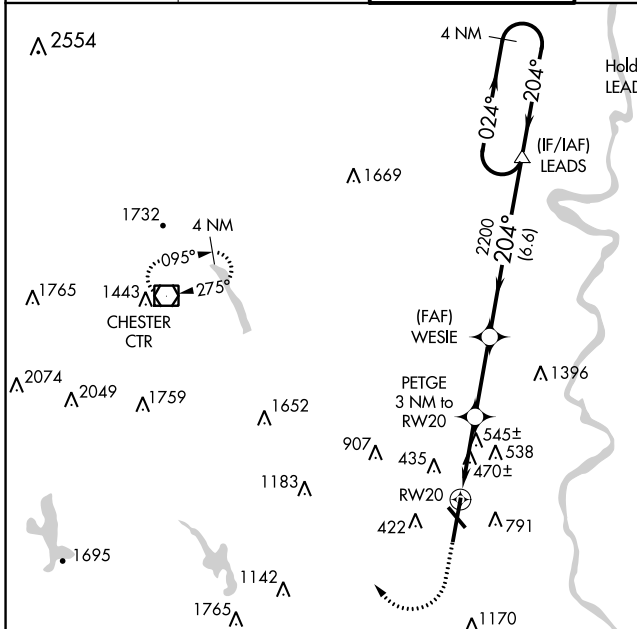
# RNAV (GPS) RWY 20

WESTFIELD-BARNES RGNL (B.A.F.)

**⚠** Baro-VNAV NA when using Bradley Intl altimeter setting. For uncompensated Baro-VNAV systems, LNAV/VNAV NA below -1.5°C (5°F) or above 54°C (130°F). DME/DME RNP-0.3 NA. When local altimeter setting not received, use Bradley Intl altimeter setting and increase LPV DA to 561; LNAV/VNAV DA to 996 and increase all Cats visibility to 2½; all MDA 60 feet and LNAV Cats B, C, D and E visibility to 1¼. For inoperative MALSR, increase LPV Cat E visibility to RVR 4000, LNAV/VNAV all Cats visibility to 2½, LNAV Cat E visibility to 1½. Night landing: Rwy 15 NA.

**MALSR**  
  
**MISSED APPROACH:**  
 Climb to 1700 then climbing right turn to 4000 direct CTR VOR/DME and hold.

ATIS <b>127.1 263.15</b>	BRADLEY APP CON <b>125.35 281.5</b>	<b>WESTFIELD TOWER *</b> <b>118.9 (CTAF) 0 251.1</b>	GND CON <b>121.7 289.4</b>	CLNC DEL <b>121.7</b>
-----------------------------	--	---	-------------------------------	--------------------------



CATEGORY	A	B	C	D	E
LPV DA		520/24	250 (300-½)		
LNAV/VNAV DA		955-1⅞	685 (700-1⅞)		
LNAV MDA	800/24	530 (600-½)	800/55	530 (600-1)	
<b>C</b> CIRCLING	1160-1¼	890 (900-1¼)	1160-2¾ 890 (900-2¾)	1660-3	1390 (1400-3)

NE-1, 11 JUL 2024 to 08 AUG 2024

NE-1, 11 JUL 2024 to 08 AUG 2024