

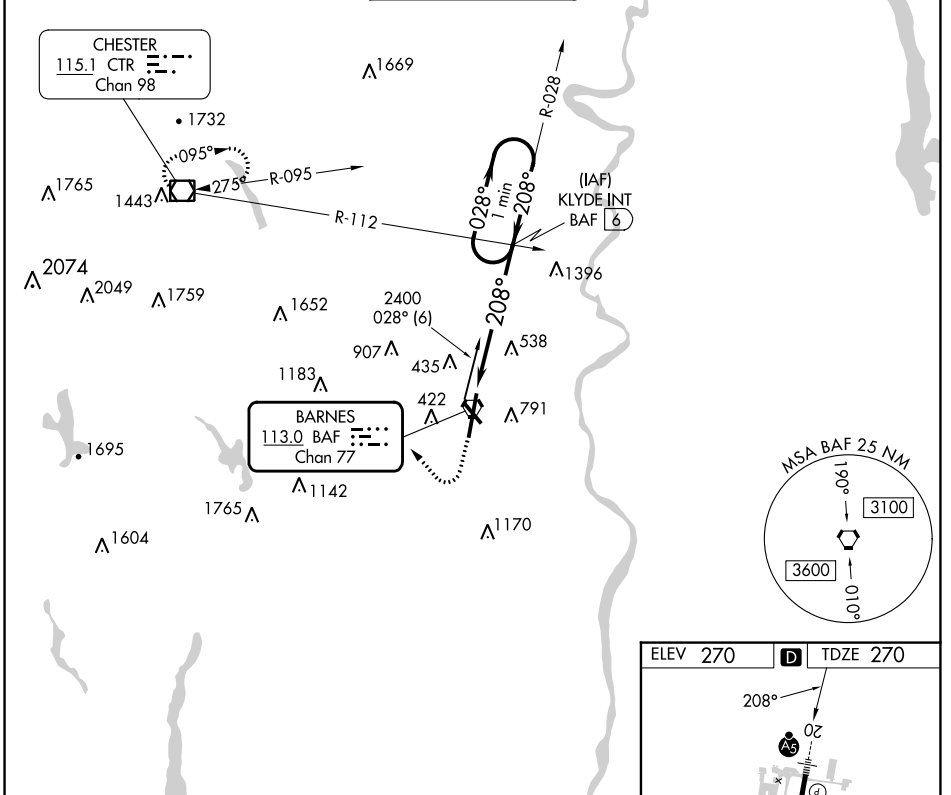
BAF VORTAC 113.0 Chan 77	APP CRS 208°	Rwy Idg 8919 TDZE 270 Apt Elev 270
---------------------------------------	------------------------	---

VOR RWY 20

WESTFIELD-BARNES RGNL (BAF)

-21°C	For inoperative MALSR, increase Cat A/B visibility to RVR 5000. Night landing: Rwy 15 NA.	MALSR 	MISSED APPROACH: Climb to 1200, then climbing right turn to 4000 direct CTR VOR/DME and hold, continue climb in hold to 4000.
-------	---	-----------	---

ATIS 127.1 263.15	BRADLEY APP CON 125.35 281.5	WESTFIELD TOWER* 118.9 (CTAF) 0 251.1	GND CON 121.7 289.4	CLNC DEL 121.7
-----------------------------	--	---	-------------------------------	--------------------------



NE-1, 11 JUL 2024 to 08 AUG 2024

NE-1, 11 JUL 2024 to 08 AUG 2024

1200 4000 CTR	KLYDE INT BAF 6 One Minute Holding Pattern															
	VGSJ and descent angles not coincident (VGSJ Angle 3.00/TCH 50).															
<table border="1"> <thead> <tr> <th>CATEGORY</th> <th>A</th> <th>B</th> <th>C</th> <th>D</th> </tr> </thead> <tbody> <tr> <td>S-20</td> <td>940/40</td> <td>670 (700-¾)</td> <td>940/60 670 (700-1¼)</td> <td>940-1½ 670 (700-1½)</td> </tr> <tr> <td>CIRCLING</td> <td>1160-1¼</td> <td>890 (900-1¼)</td> <td>1160-2¾ 890 (900-2¾)</td> <td>1660-3 1390 (1400-3)</td> </tr> </tbody> </table>	CATEGORY	A	B	C	D	S-20	940/40	670 (700-¾)	940/60 670 (700-1¼)	940-1½ 670 (700-1½)	CIRCLING	1160-1¼	890 (900-1¼)	1160-2¾ 890 (900-2¾)	1660-3 1390 (1400-3)	
CATEGORY	A	B	C	D												
S-20	940/40	670 (700-¾)	940/60 670 (700-1¼)	940-1½ 670 (700-1½)												
CIRCLING	1160-1¼	890 (900-1¼)	1160-2¾ 890 (900-2¾)	1660-3 1390 (1400-3)												

ELEV 270	D	TDZE 270
----------	----------	----------

REIL Rwy 15
MIRL Rwy 15-33
HIRL Rwy 2-20