

# TACAN RWY 23

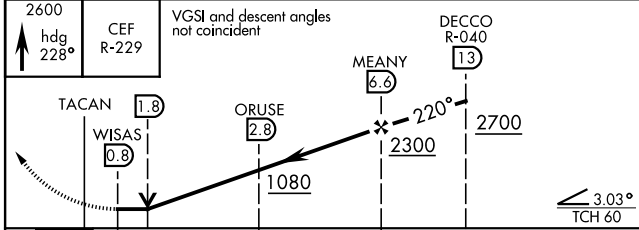
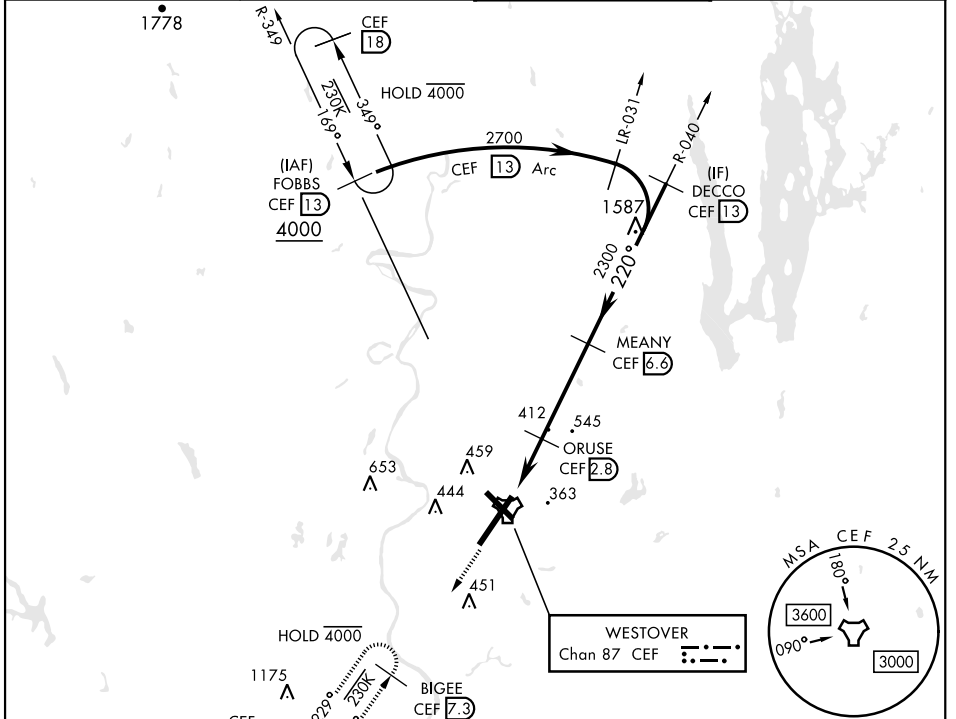
TACAN CEF Chan <b>87</b>	APCH CRS <b>220°</b>	Rwy Idg <b>11,597</b> TDZE <b>241</b> Arprt Elev <b>241</b>	AL-447 [USAF]	WESTOVER ARB METROPOLITAN (KCEF)
-----------------------------	-------------------------	---	---------------	----------------------------------

▼ \* When ALS inop, increase CAT AB RVR to 55 and vis to 1 mile, CAT CDE vis to 1 $\frac{1}{2}$  miles.  
\*\* Circling not authorized all CAT acft from RWY 23 clockwise to RWY 33.

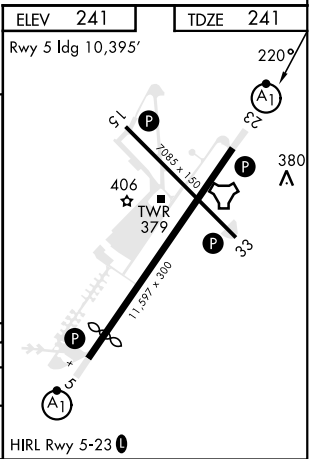


MISSED APPROACH: Climb to 2600 on heading 228° to intercept CEF TACAN R-229 direct BIGEE and hold.

ATIS ★ <b>127.525</b>	BRADLEY APP CON <b>125.35 281.5</b>	TOWER ★ <b>134.85 (CTAF) 0 348.75</b>	GND CON <b>118.35 275.8</b>
--------------------------	--	--	--------------------------------



CATEGORY	A	B	C	D	E
S-23 *	760/24 519 (600-1/2)		760/55 519 (600-1)		
CIRCLING **	760-1 519 (600-1)	780-1 539 (600-1)	840-1 1/2 599 (600-1 1/2)	1060-2 3/4 819 (900-2 3/4)	1080-3 839 (900-3)



# TACAN RWY 23

NE-1, 11 JUL 2024 to 08 AUG 2024

NE-1, 11 JUL 2024 to 08 AUG 2024