

TACAN CEF Chan <b>87</b>	APCH CRS <b>052°</b>	Rwy ldg <b>10,395</b> TDZE <b>237</b> Arprt Elev <b>241</b>
-----------------------------	-------------------------	---

[USAF]

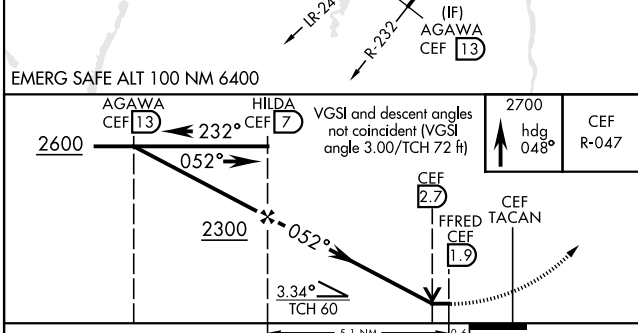
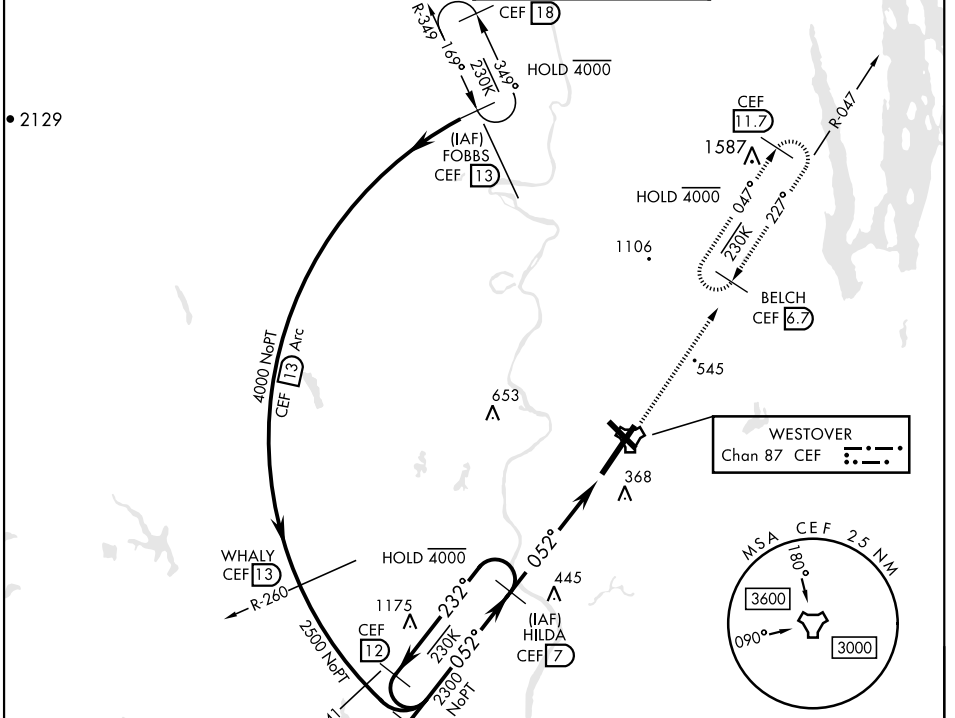
WESTOVER ARB METROPOLITAN (KCEF)

▼ \* When ALS inop increase CAT AB RVR to 55 and vis to 1 mile, CAT CDE vis to 1 3/4 miles.  
 \*\* Circling not authorized all CAT act from RWY 23 clockwise to RWY 33.

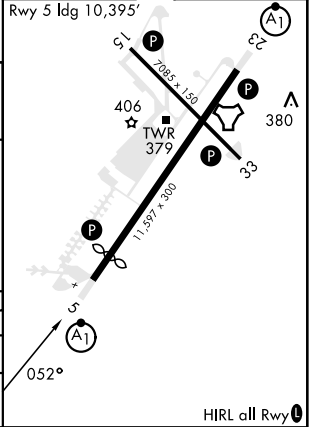
ALS-F-1 A1

MISSED APPROACH: Climb to 2700 on heading 048° to intercept CEF TACAN R-047 direct BELCH and hold.

ATIS ★ <b>127.525</b>	BRADLEY APP CON <b>125.35 281.5</b>	TOWER ★ <b>134.85</b> (CTAF) <b>348.75</b>	GND CON <b>118.35 275.8</b>
--------------------------	--	---	--------------------------------



ELEV <b>241</b>	TDZE <b>237</b>
Rwy 5 ldg 10,395'	



CATEGORY	A	B	C	D	E
S-5 *	840/24	603 (600-1/2)	840-1 3/8	603 (600-1 3/8)	
<b>C</b> CIRCLING **	840-1	599 (600-1)	840-1 3/4	1060-2 3/4	1080-3
			599 (600-1 3/4)	819 (900-2 3/4)	839 (900-3)

HIRL all Rwy 0

NE-1, 11 JUL 2024 to 08 AUG 2024

NE-1, 11 JUL 2024 to 08 AUG 2024