

WAAS CH <b>69232</b> <b>W34A</b>	APP CRS <b>319°</b>	Rwy Idg <b>3421</b> TDZE <b>14</b> Apt Elev <b>14</b>
--	------------------------	---

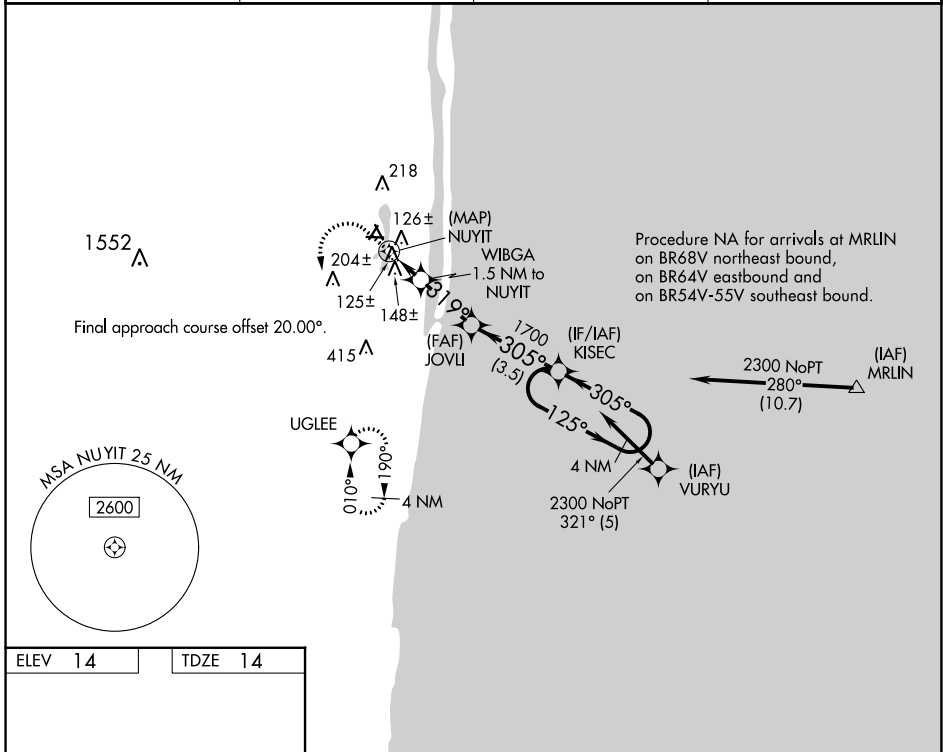
# RNAV (GPS) RWY 34

PALM BEACH COUNTY PARK (L.N.A)

**▼** DME/DME RNP-0.3 NA. Rwy 34 helicopter visibility reduction below 1 SM NA. Circling to Rwy 4, 16, 22, 28 NA at night. Straight-in Rwy 34 NA at night, Circling Rwy 34 NA at night.

MISSED APPROACH: (Do not exceed 200K until UGLEE) Climb to 700 then climbing left turn to 2000 direct UGLEE and hold.

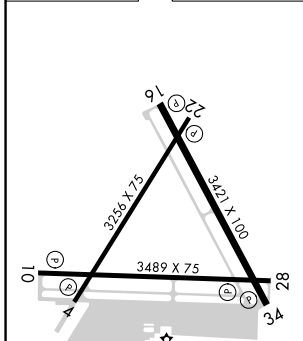
AWOS-3PT <b>119.925</b>	PALM BEACH APP CON <b>127.35 343.6</b>	CINC DEL <b>127.35</b>	UNICOM <b>122.7 (CTAF) 0</b>
----------------------------	---	---------------------------	---------------------------------



SE-3, 11 JUL 2024 to 08 AUG 2024

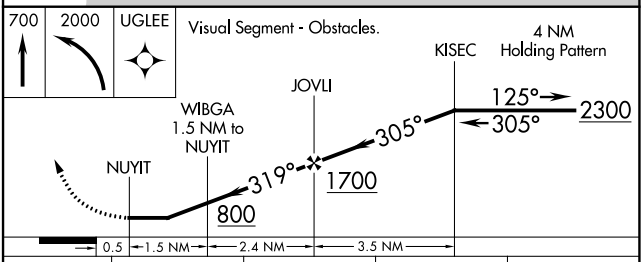
SE-3, 11 JUL 2024 to 08 AUG 2024

ELEV 14	TDZE 14
---------	---------



MIRL Rwy 4-22, 10-28 and 16-34 0

<b>C</b> CIRCLING	460-1 446 (500-1)	520-1 506 (600-1)	580-1½ 566 (600-1½)	NA
-------------------	----------------------	----------------------	------------------------	----



CATEGORY	A	B	C	D
LP MDA	380-1 366 (400-1)			NA
LNAV MDA	400-1	386 (400-1)	400-1½ 386 (400-1½)	NA
<b>C</b> CIRCLING	460-1 446 (500-1)	520-1 506 (600-1)	580-1½ 566 (600-1½)	NA