

WICHITA, KANSAS

# RNAV (GPS) RWY 19R

WAAS CH 71277 W19A	APCH CRS 189°	Rwy ldg TDZE Arprt Elev	12,000 1372 1372
--------------------------	------------------	-------------------------------	------------------------

-(USAF)

MC CONNELL AFB (KIAB)

DME/DME RNP-0.3 NA

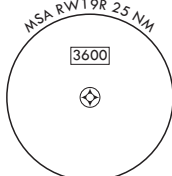
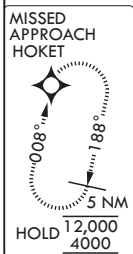
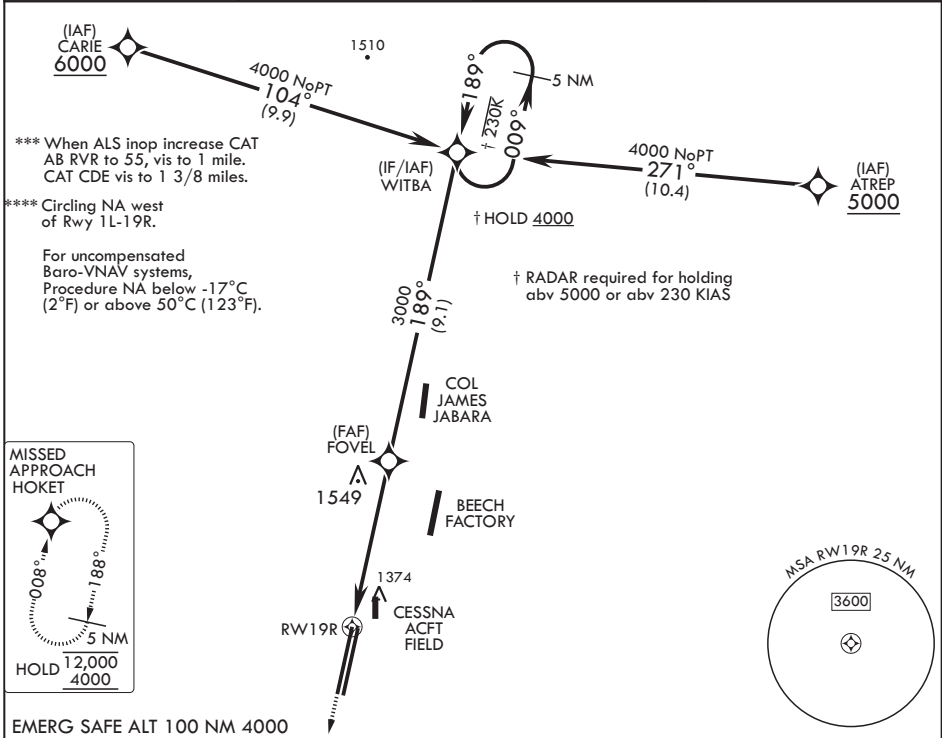
ALSF-1

MISSED APPROACH: Climb to 4000 direct HOKET and hold.

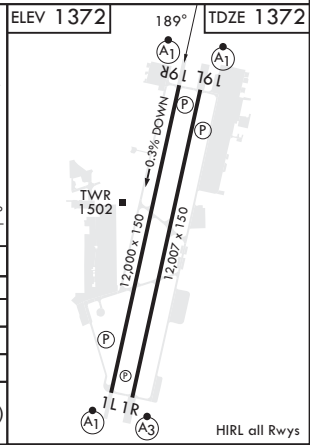
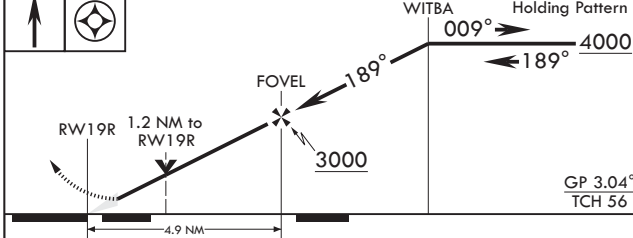
▼ \* When ALS inop, increase RVR to 40, vis to 3/4 mile.  
\*\* When ALS inop, increase vis to 1 1/4 miles.



D-ATIS 124.65 269.9	WICHITA APP CON 134.8 269.1	TOWER 127.25 291.775	GND CON 118.0 275.8
------------------------	--------------------------------	-------------------------	------------------------



EMERG SAFE ALT 100 NM 4000



CATEGORY	A	B	C	D	E
LPV DA*		1572/24	200	(200-1/2)	
LNAV/VNAV DA**		1748/40	376	(400-3/4)	
LNAV MDA***	1820/24 448 (500-1/2)		1820/45	448 (500-1/4)	
☐ CIRCLING****	1900-1 528 (600-1)		1900-1 1/2 528 (600-1 1/2)	2400-3 1028 (1100-3)	

WICHITA, KANSAS  
Amdt 5 28DEC23

37°37'N - 97°16'W

MC CONNELL AFB (KIAB)

# RNAV (GPS) RWY 19R

NC-2, 11 JUL 2024 to 08 AUG 2024

NC-2, 11 JUL 2024 to 08 AUG 2024