

WAAS CH 53515 W27A	APP CRS 268°	Rwy ldg 7000 TDZE 72 Apt Elev 80
--	------------------------	---

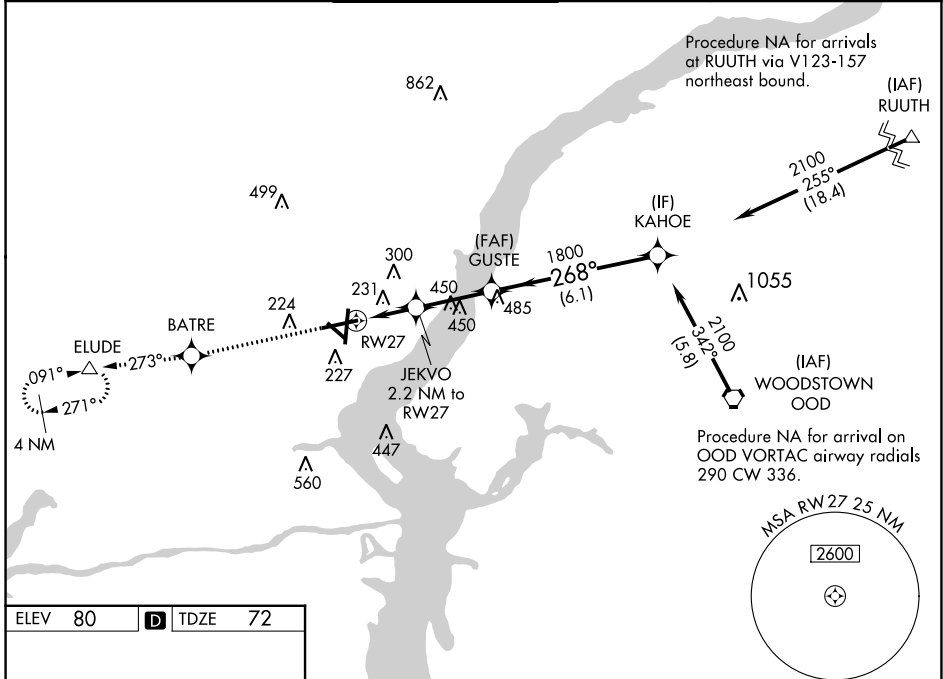
RNAV (GPS) RWY 27

NEW CASTLE (ILG)

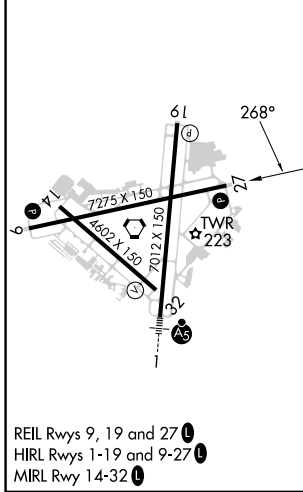
Baro-VNAV NA when using Philadelphia Intl altimeter setting. For uncompensated Baro-VNAV systems, LNAV/VNAV DA NA below -15°C (5°F) or above 39°C (102°F). DME/DME RNP-0.3 NA. Helicopter visibility reduction below ¼ SM NA. When local altimeter setting not received, use Philadelphia Intl altimeter setting: increase LPV DA to 480, LNAV/VNAV DA to 584, and all MDAs 60 feet; increase LPV all Cats and LNAV Cat C/D visibility ½ SM and LNAV/VNAV all Cats and Circling Cat D visibility ¼ SM.

MISSED APPROACH: Climb to 2000 direct BATRE and via track 273° to ELUDE and hold.

ATIS 123.95	PHILADELPHIA APP CON 118.35 323.1	WILMINGTON TOWER* 126.0 (CTAF) 352.05	GND CON 121.7 275.8	CLNC DEL 119.95	UNICOM 122.95
-----------------------	---	--	-------------------------------	---------------------------	-------------------------



ELEV 80	D	TDZE 72
---------	----------	---------



2000	BATRE	tr 273°	ELUDE	VGSI and RNAV glidepath not coincident (VGSI Angle 3.00/TCH 54).	Procedure Turn NA
*LNAV only.				KAHOE	GP 3.10° TCH 68
RW27		JEKVO 2.2 NM to RW27	GUSTE	2100	
860*		1800	268°		
2.2 NM		2.8 NM	6.1 NM		

CATEGORY	A	B	C	D
LPV DA	426-1 1/8	354 (400-1 1/8)		
LNAV/VNAV DA	530-1 3/8	458 (500-1 3/8)		
LNAV MDA	500-1	428 (500-1)	500-1 1/4	428 (500-1 1/4)
CIRCLING	540-1 460 (500-1)	560-1 480 (500-1)	600-1 1/2 520 (600-1 1/2)	800-2 1/4 720 (800-2 1/4)

NE-3, 11 JUL 2024 to 08 AUG 2024

NE-3, 11 JUL 2024 to 08 AUG 2024