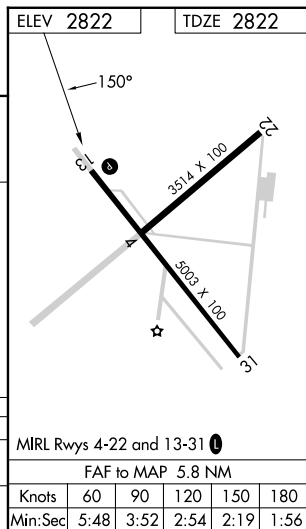
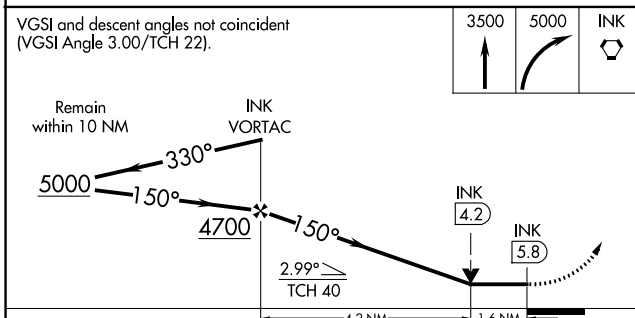
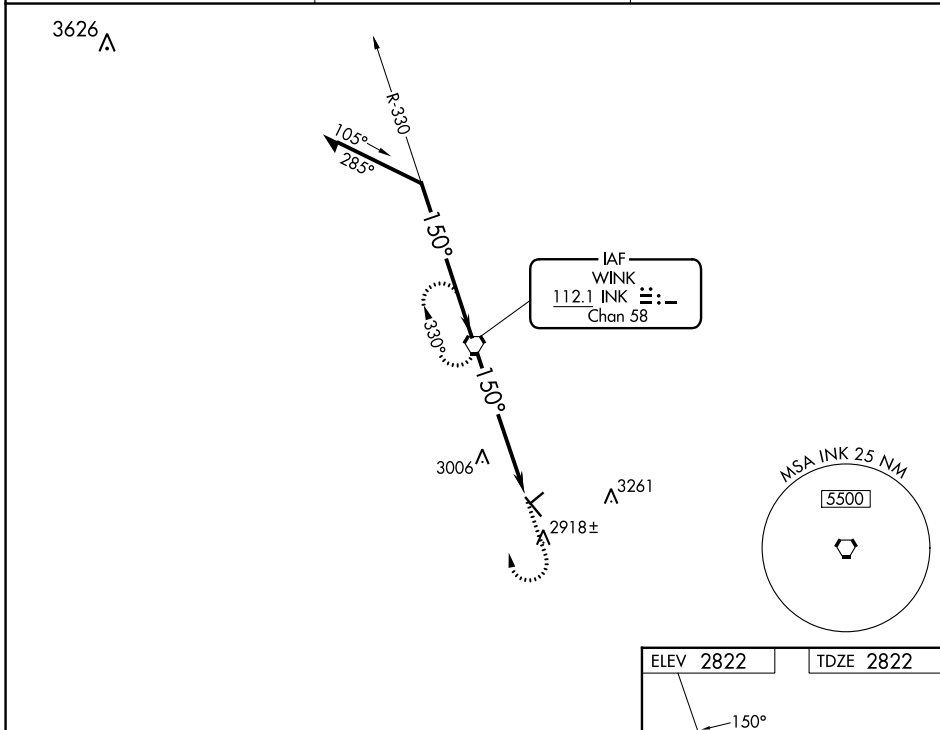


VORTAC INK <b>112.1</b> Chan <b>58</b>	APP CRS <b>150°</b>	Rwy Idg TDZE Apt Elev	<b>5003</b> <b>2822</b> <b>2822</b>
--	------------------------	-----------------------------	---

**VOR RWY 13**  
WINKLER COUNTY (INK)

**▲**  
**▲** MISSED APPROACH: Climb to 3500 then climbing right turn to 5000 direct INK VORTAC and hold, continue climb-in-hold to 5000.

ASOS <b>118.325</b>	FORT WORTH CENTER <b>133.1 298.95</b>	UNICOM <b>123.0 (CTAF) 0</b>
------------------------	--	---------------------------------



CATEGORY	A	B	C	D
S-13	3340-1	518 (600-1)	3340-1 $\frac{3}{8}$ 518 (600-1 $\frac{3}{8}$ )	NA
<b>C</b> CIRCLING	3340-1	518 (600-1)	3580-2 $\frac{1}{4}$ 758 (800-2 $\frac{1}{4}$ )	NA

SC-3, 11 JUL 2024 to 08 AUG 2024

SC-3, 11 JUL 2024 to 08 AUG 2024