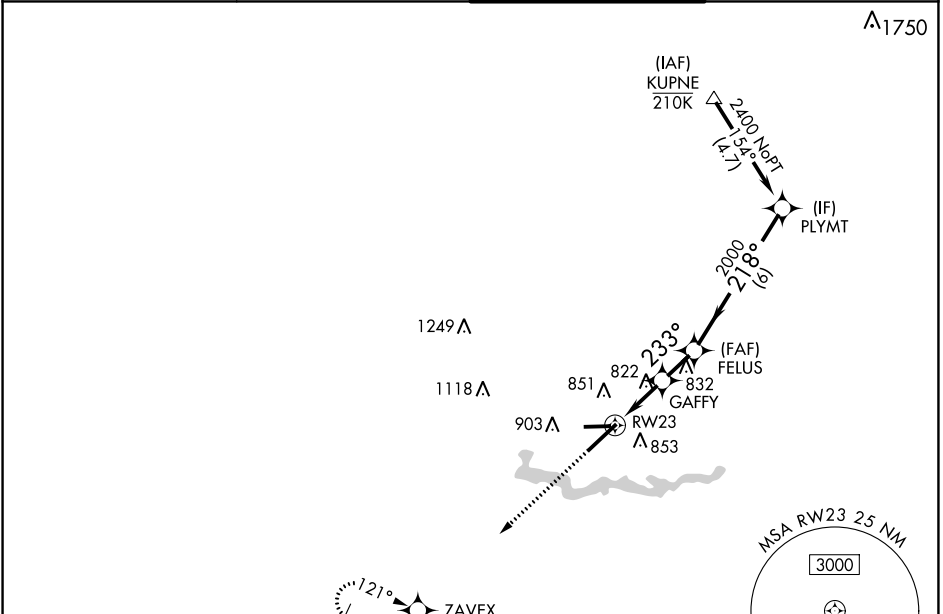


WAAS CH 65744 W23A	APP CRS 233°	Rwy Idg 7543 TDZE 710 Apt Elev 716
--	------------------------	---

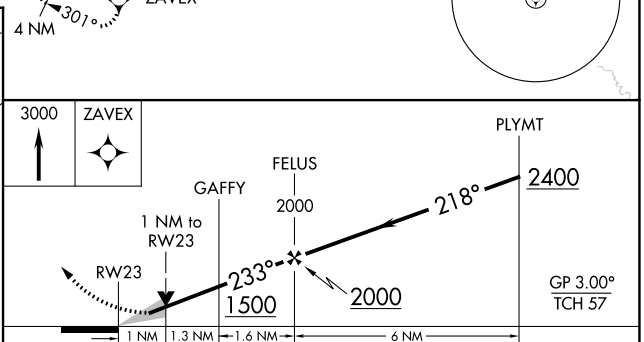
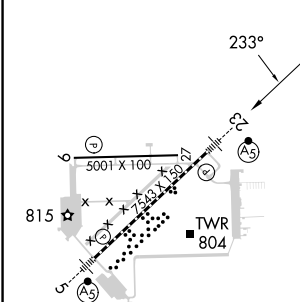
RNAV (GPS) RWY 23

WILLOW RUN (YIP)

RNP APCH - GPS.		MALSR 	MISSED APPROACH: Climb to 3000 direct ZAVEX and hold, continue climb-in-hold to 3000.
For uncompensated Baro-VNAV systems, procedure NA below -19°C or above 54°C. For inop ALS, increase LNAV/VNAV all Cats visibility to ¾ SM, LNAV Cats C/D visibility to 1 SM.			
ATIS 127.425	DETROIT APP CON 118.95 284.0	WILLOW RUN TOWER 125.275 256.9	GND CON 119.975



ELEV 716	D	TDZE 710
----------	----------	----------



CATEGORY	A	B	C	D
LPV DA		910-½	200 (200-½)	
LNAV/VNAV DA		982-½	272 (300-½)	
LNAV MDA	1080-½	370 (400-½)	1080-⅝	370 (400-⅝)
C CIRCLING	1 220-1	504 (600-1)	1220-1½ 504 (600-1½)	1400-2¼ 684 (700-2¼)

TDZ/CL Rwy 5
HIRL Rwy 5-23
MIRL Rwy 9-27

EC-1, 11 JUL 2024 to 08 AUG 2024

EC-1, 11 JUL 2024 to 08 AUG 2024