

CHERRY POINT, NORTH CAROLINA

COPTER TACAN RWY 23R

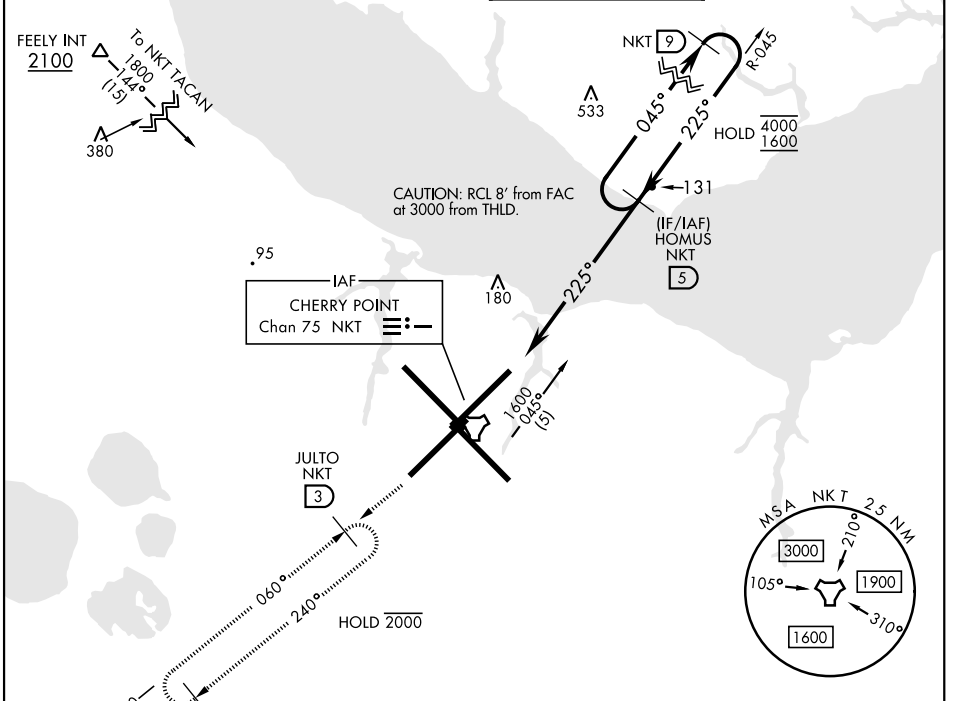
TACAN NKT Chan 75	APCH CRS 225°	Rwy ldg TDZE 23 Arprt Elev 29
-----------------------------	-------------------------	--

[USN]

CHERRY POINT MCAS (CUNNINGHAM FLD) (KNKT)

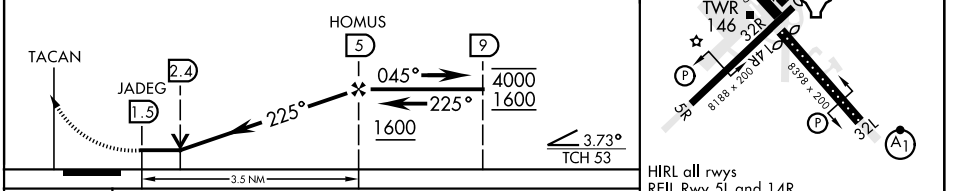
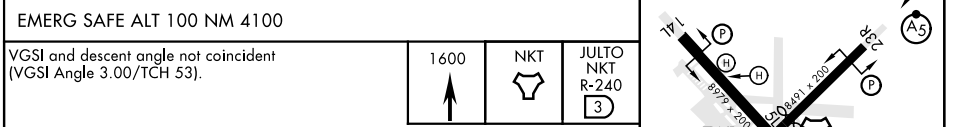
<p>▼ * When ALS inop, increase vis to 1 mile.</p> <p>Max Airspeed 90 KIAS</p>	<p>MALSR</p>	<p>MISSED APPROACH: Climb to 1600 direct NKT TACAN and fly NKT R-240 to JULTO and hold.</p>
---	--------------	---

<p>ATIS</p> <p>127.475 244.875</p>	<p>(E) 119.75 (E) 132.575 (W) 119.35</p>	<p>APP CON</p> <p>360.775 (abv 2600') 299.6 (at/blw 2600') 377.175 (N) 124.1 268.7</p>	<p>TOWER</p> <p>121.3 340.2</p>	<p>GND CON</p> <p>128.625 239.025</p>	<p>CLNC DEL</p> <p>125.95 316.125</p>	<p>ASR/ PAR</p>
--	---	--	--	---	---	---------------------



ELEV 29	D	TDZE 23
----------------	----------	----------------

Rwy 32R, 23L, 14R, 5L marked in center mat area.



CATEGORY	COPTER		
S-23R *	440-1/2	417	(500-1/2)

CHERRY POINT, NORTH CAROLINA 34°54'N-76°53'W CHERRY POINT MCAS (CUNNINGHAM FLD) (KNKT)

Amdt 8 02NOV23

COPTER TACAN RWY 23R

SE-2, 11 JUL 2024 to 08 AUG 2024

SE-2, 11 JUL 2024 to 08 AUG 2024