

# HI-TACAN X RWY 32L

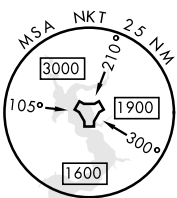
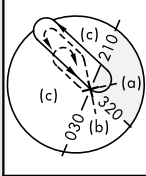
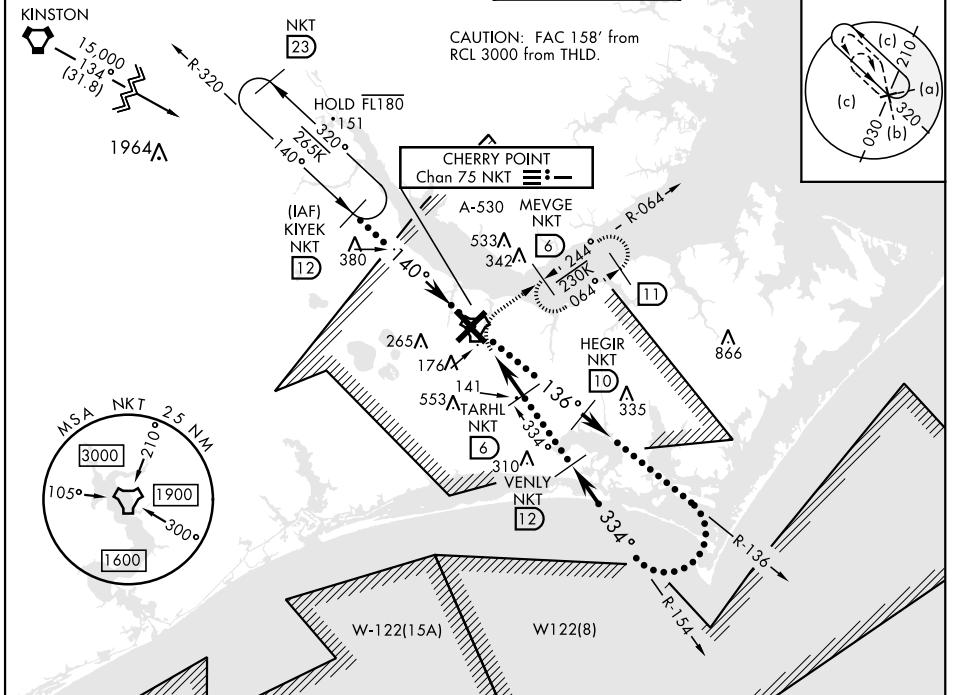
TACAN NKT Chan <b>75</b>	APCH CRS <b>334°</b>	Rwy Idg TDZE <b>26</b> Arprt Elev <b>29</b>
-----------------------------	-------------------------	---

[USN]

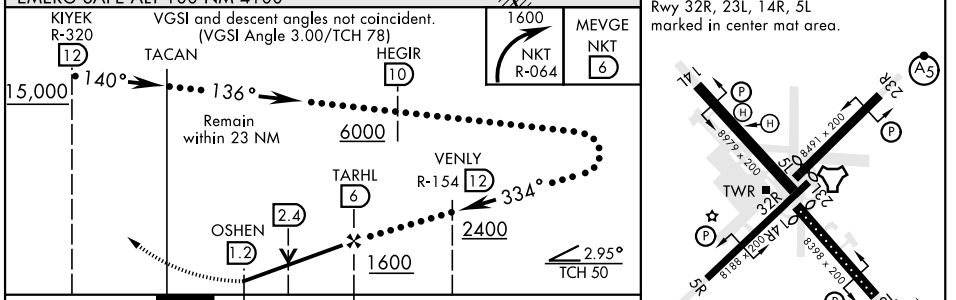
CHERRY POINT MCAS (CUNNINGHAM FLD) (KNKT)

▼ \* When ALS inop, increase vis to 1½ miles. ALSF-1  
A1 MISSED APPROACH: Climbing right turn to 1600, intercept NKT R-064 to MEVGE and hold.

ATIS <b>127.475</b> <b>244.875</b>	(E) <b>119.75</b> (E) <b>132.575</b> (W) <b>119.35</b>	APP CON <b>360.775</b> (abv 2600') <b>299.6</b> (at/blw 2600') <b>377.175</b> (N) <b>124.1</b> <b>268.7</b>	TOWER <b>121.3</b> <b>340.2</b>	GND CON <b>128.625</b> <b>239.025</b>	CLNC DEL <b>125.95</b> <b>316.125</b>	ASR/ PAR
--	--	--	------------------------------------	---	---	-------------

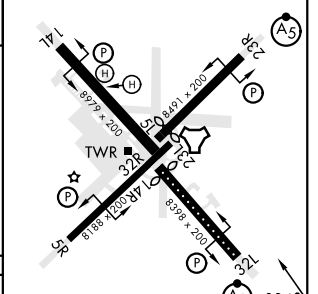


EMERG SAFE ALT 100 NM 4100	ELEV <b>29</b> <span style="border: 1px solid black; padding: 2px;">D</span> TDZE <b>26</b>
----------------------------	---



ELEV <b>29</b> <span style="border: 1px solid black; padding: 2px;">D</span> TDZE <b>26</b>
---

Rwy 32R, 23L, 14R, 5L marked in center mat area.



CATEGORY	C	D	E
S-32L *	460-¾	435 (500-¾)	
<span style="border: 1px solid black; padding: 2px;">C</span> CIRCLING	580-1½ 551 (600-1½)	580-2 551 (600-2)	700-2½ 671 (700-2½)

HIRL all rwys  
REIL Rwy 5L and 14R  
Rwy 5L-23R Idg 7552'  
Rwy 14R-32L Idg 7551'

# HI-TACAN X RWY 32L

SE-2, 11 JUL 2024 to 08 AUG 2024

SE-2, 11 JUL 2024 to 08 AUG 2024