

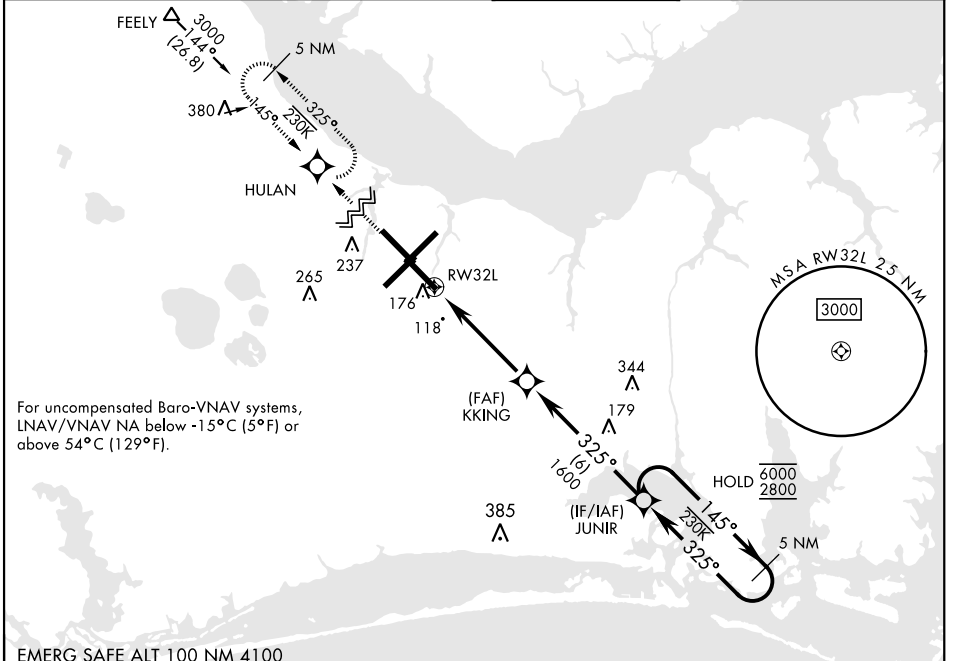
CHERRY POINT, NORTH CAROLINA

RNAV (GPS) RWY 32L

WAAS Chan 54304 W32A	APCH CRS 325°	Rwy ldg TDZE 26 Arprt Elev 29	7551
--	-------------------------	---	-------------

[USN] CHERRY POINT MCAS (CUNNINGHAM FLD) (KNKT)

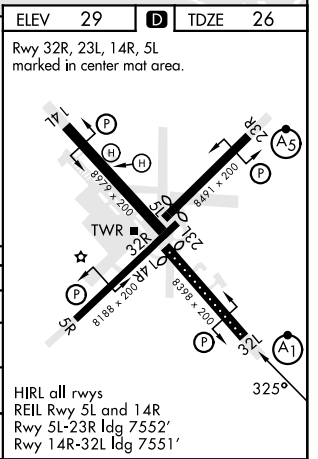
RNP APCH ▼ *When ALS inop, increase vis to ¾ mile. **When ALS inop, increase vis to 1 mile. ***When ALS inop, increase CAT AB vis to 1 mile, CAT CD vis to 1¼ miles.		ALSIF-1 	MISSED APPROACH: Climb to 600 then climbing right turn to 2800 direct HULAN and hold.			
ATIS 127.475 244.875	(E) 119.75 (E) 132.575 (W) 119.35	APP CON 360.775 (abv 2600') 299.6 (at/blw 2600') 377.175 (N) 124.1 268.7	TOWER 121.3 340.2	GND CON 128.625 239.025	CLNC DEL 125.95 316.125	ASR/ PAR



SE-2, 11 JUL 2024 to 08 AUG 2024

SE-2, 11 JUL 2024 to 08 AUG 2024

EMERG SAFE ALT 100 NM 4100				ELEV 29	D	TDZE 26
VGSI and RNAV glidepath not coincident. (VGSI Angle 3.00/TCH 78)				5 NM Holding Pattern 		
				GP 3.04° TCH 50		
CATEGORY	A	B	C	D		
LPV DA*	225-½		200	(200-½)		
LNAV/VNAV DA**	400-¾		375	(400-¾)		
LNAV MDA***	460-½	435 (500-½)	460-¾	435 (500-¾)		
C CIRCLING	580-1	551 (600-1)	580-1½	551 (600-1½)	580-2	551 (600-2)



CHERRY POINT, NORTH CAROLINA 34° 54'N-76° 53'W CHERRY POINT MCAS (CUNNINGHAM FLD) (KNKT)

Amdt 8 02NOV23

RNAV (GPS) RWY 32L