

# TACAN Z RWY 32L

TACAN NKT Chan <b>75</b>	APCH CRS <b>334°</b>	Rwy Idg TDZE Arprt Elev	<b>7551</b> <b>26</b> <b>29</b>
-----------------------------	-------------------------	-------------------------------	---------------------------------------

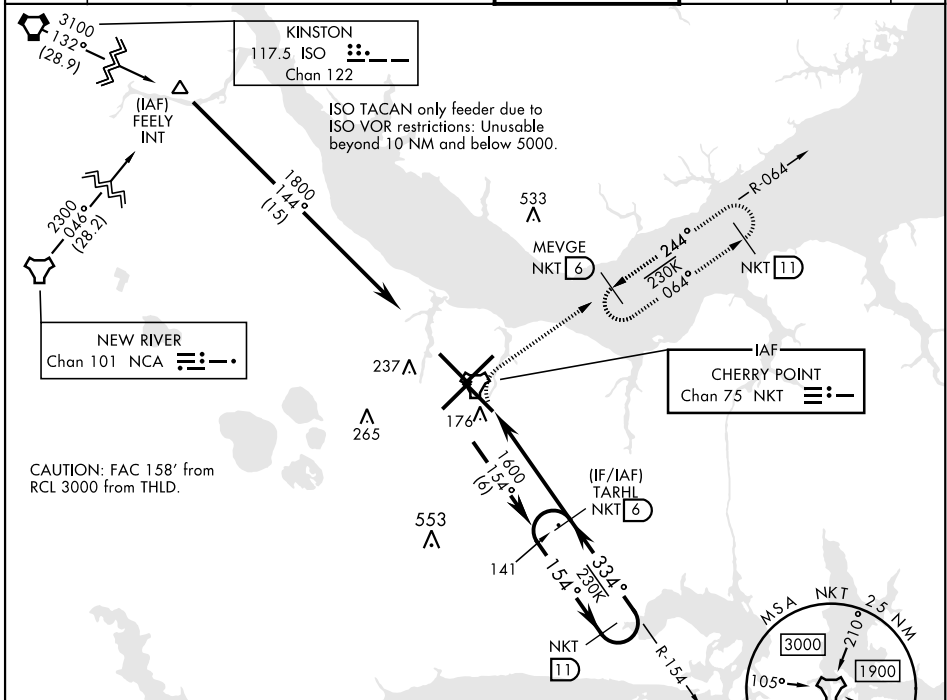
[USN]

CHERRY POINT MCAS (CUNNINGHAM FLD) (KNKT)

\* When ALS inop, increase vis CAT AB to 1 mile, CAT CD to 1 3/8 miles.
 


 MISSED APPROACH: Climbing right turn to 1600 and intercept NKT R-064 to MEVGE and hold.

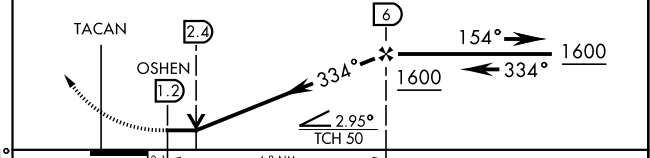
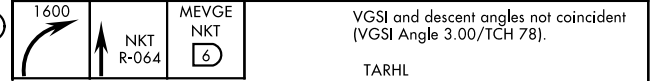
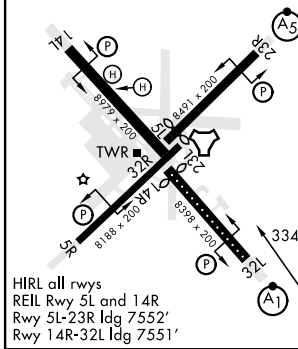
ATIS <b>127.475</b> <b>244.875</b>	(E) <b>119.75</b> (E) <b>132.575</b> (W) <b>119.35</b>	APP CON <b>360.775</b> (abv 2600') <b>299.6</b> (at/blw 2600') <b>377.175</b> (N) <b>124.1</b> <b>268.7</b>	TOWER <b>121.3</b> <b>340.2</b>	GND CON <b>128.625</b> <b>239.025</b>	CLNC DEL <b>125.95</b> <b>316.125</b>	ASR/ PAR
--	--	--	------------------------------------	---	---	-------------



EMERG SAFE ALT 100 NM 4100

ELEV 29	<b>D</b>	TDZE 26
---------	----------	---------

Rwy 32R, 23L, 14R, 5L marked in center mat area.



CATEGORY	A	B	C	D
S-32L *	460-1/2	435 (500-1/2)	460-3/4 435 (500-3/4)	
CIRCLING	580-1	551 (600-1)	580-1 1/2 551 (600-1 1/2)	580-2 551 (600-2)

# TACAN Z RWY 32L

SE-2, 11 JUL 2024 to 08 AUG 2024

SE-2, 11 JUL 2024 to 08 AUG 2024