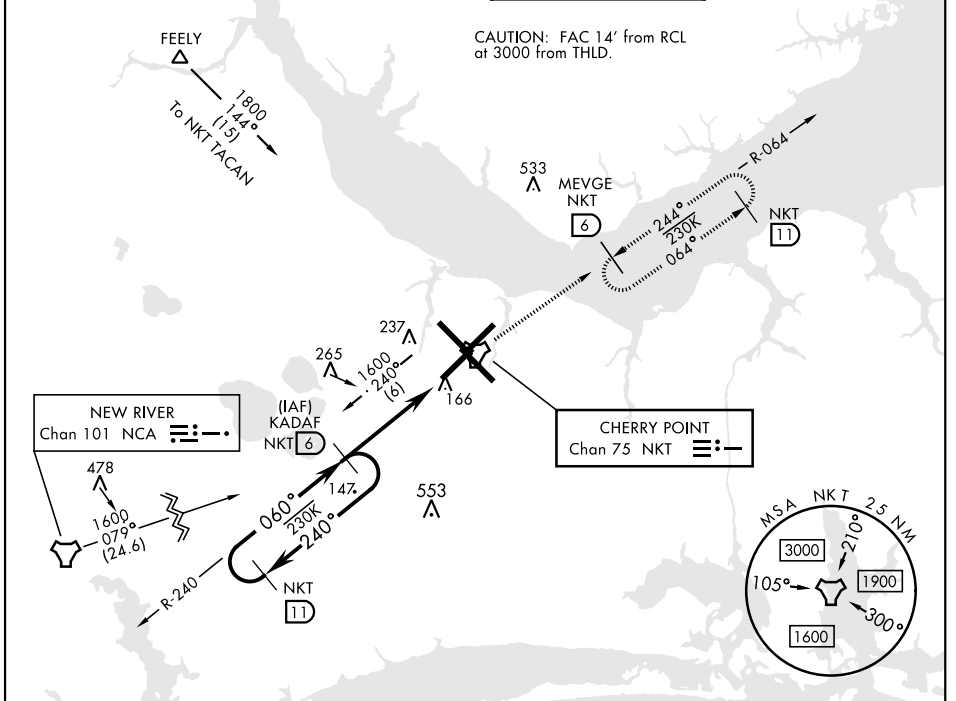


TACAN Z RWY 5R

TACAN NKT Chan 75	APCH CRS 060°	Rwy ldg TDZE 27 Arprt Elev 29	[USN] CHERRY POINT MCAS (CUNNINGHAM FLD) (KNKT)
--------------------------	----------------------	--	---

▼ MISSED APPROACH: Climb to 1600 direct NKT TACAN and fly NKT R-064 to MEVGE and hold.

ATIS 127.475 244.875	(E) 119.75 (E) 132.575 (W) 119.35	APP CON 360.775 (aby 2600') 299.6 (at/blw 2600') 377.175 (N) 124.1 268.7	TOWER 121.3 340.2	GND CON 128.625 239.025	CLNC DEL 125.95 316.125	ASR/ PAR
--	--	---	-----------------------------	---	---	-------------

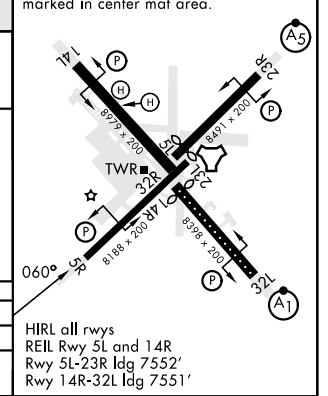
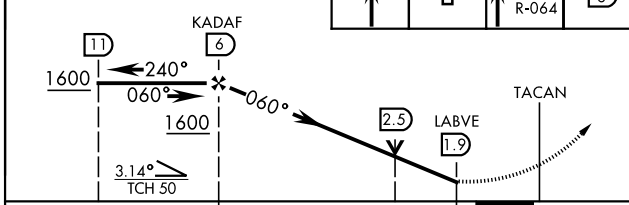


ELEV 29	TDZE 27
----------------	----------------

Rwy 32R, 23L, 14R, 5L marked in center mat area.

EMERG SAFE ALT 100 NM 4100

VGSI and descent angles not coincident (VGSI Angle 3.00/TCH 73).



CATEGORY	A	B	C	D
S-5R	420-1 394 (400-1)	420-1½ 394 (400-1½)	580-1½ 580-2	580-2 551 (600-2)
C CIRCLING	580-1 551 (600-1)	551 (600-1½)	551 (600-2)	

HIRL all rwys
REIL Rwy 5L and 14R
Rwy 5L-23R ldg 7552'
Rwy 14R-32L ldg 7551'

TACAN Z RWY 5R

SE-2, 11 JUL 2024 to 08 AUG 2024

SE-2, 11 JUL 2024 to 08 AUG 2024