

LOC/DME I-PSC <b>108.7</b> Chan 24	APP CRS <b>211°</b>	Rwy Idg TDZE Apt Elev	<b>7110</b> <b>403</b> <b>410</b>
--	------------------------	-----------------------------	---

# ILS or LOC RWY 21R

TRI-CITIES (PSC)

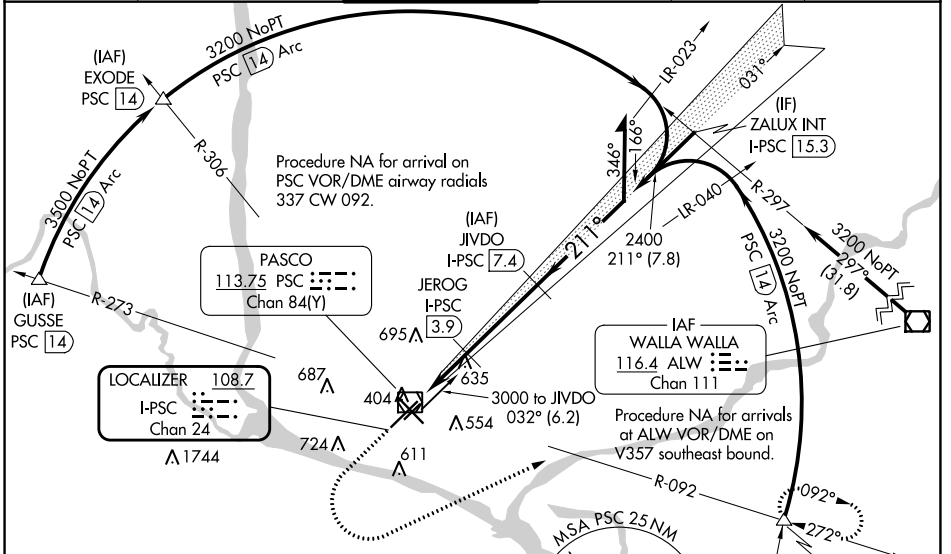
DME required for LOC only.  
DME required for procedure entry at GUSSE, EXODE, CITYS, PSC VOR/DME.

**▽** VDP NA when using Hermiston altimeter setting. For inop ALS when using Hermiston altimeter setting, increase S-ILS 21R all Cats visibility to RVR 4500, increase S-LOC 21R Cats C and D visibility to 1¼ SM. When local altimeter setting not received, use Hermiston altimeter setting: increase DA to 698 feet and all MDAs 100 feet; increase S-LOC 21R Cat C and D visibility ¾ SM and Circling Cat C and D visibility ¼ SM. \* RVR 1800 authorized with use of FD or AP or HUD to DA (NA when using Hermiston altimeter setting).

**MALSR**

**MISSED APPROACH:**  
Climb to 1200 then climbing left turn to 3200 on heading 050° and PSC VOR/DME R-092 to CITYS INT/PSC VOR/DME 1.4 DME and hold.

ATIS <b>125.65</b>	SPOKANE APP CON * <b>128.75 377.2</b>	TRI-CITIES TOWER * <b>135.3 (CTAF) 323.3</b>	GND CON <b>121.8</b>	CLNC DEL <b>120.0</b>	UNICOM <b>122.95</b>
-----------------------	--	---	-------------------------	--------------------------	-------------------------



NW-1, 11 JUL 2024 to 08 AUG 2024

NW-1, 11 JUL 2024 to 08 AUG 2024

ELEV 410	<b>D</b>	TDZE 403
----------	----------	----------

Λ 972 ±

Λ 2463    Λ 2483

1200	3200	PSC R-092	CITYS	JIVDO I-PSC 7.4	Remain within 10 NM
↑	hdg 050°		△		

Use I-PSC DME when on the localizer course.

JEROG I-PSC 3.9

2400

031°

2900

211°

2400

GS 3.00° TCH 55

1.5 NM    1.1 NM    3.5 NM

CATEGORY	A	B	C	D
S-ILS 21R*	603/24 200 (200-½)			
S-LOC 21R	940/24	537 (600-½)	940/55	537 (600-1)
<b>C</b> CIRCLING	940-1	530 (600-1)	1040-1¾ 630 (700-1¾)	1100-2¼ 690 (700-2¼)