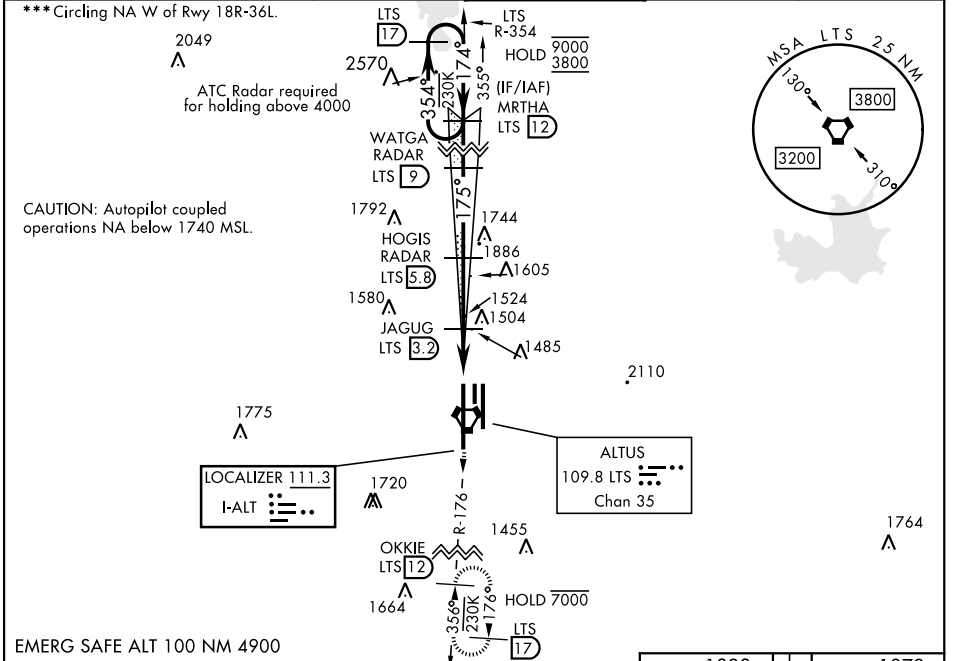


ILS Z or LOC RWY 18R

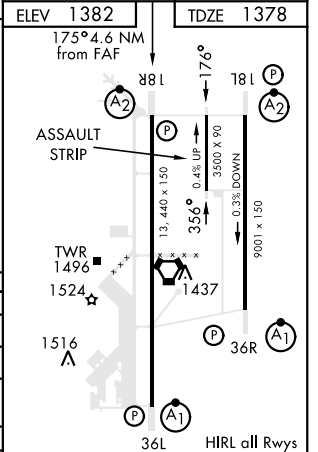
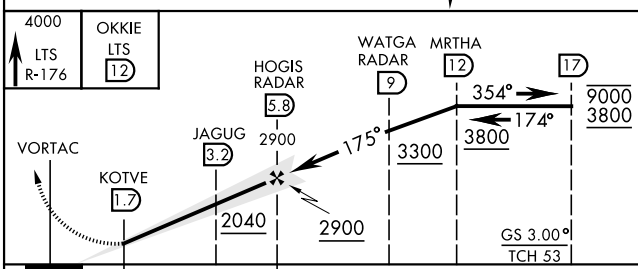
LOC I-ALT 111.3	APCH CRS 175°	Rwy Idg 13,440 TDZE 1378 Arprt Elev 1382	AL-482 [USAF]	ALTUS AFB (KLTS)
---------------------------	-------------------------	---	---------------	------------------

DME or RADAR required.	SALSF 	MISSED APPROACH: Climb to 4000, intercept LTS VORTAC R-176 to OKKIE and hold.
<p>***When ALS inop, increase RVR to 55 and vis to 1 mile.</p> <p>***When ALS inop, increase CAT AB RVR to 55, vis to 1 mile; CAT CDE vis to 1/8 miles.</p>		

ATIS ★ 109.8 273.5	FORT WORTH CENTER 133.5 350.35	APP CON 125.1 353.7	TOWER ★ 119.65 254.4	GND CON 121.85 275.8	CLNC DEL 120.65 284.7
------------------------------	--	-------------------------------	--------------------------------	--------------------------------	---------------------------------



EMERG SAFE ALT 100 NM 4900



CATEGORY	A	B	C	D	E
S-ILS 18R	1578/40		200	(200-3/4)	
S-LOC 18R*	1760/40	382 (400-3/4)	1760/45	382	(400-7/8)
*** CIRCLING	1780-1 398 (400-1)	1840-1 458 (500-1)	1880-1 1/2 498 (500-1 1/2)	2080-2 1/4 698 (700-2 1/4)	2180-2 3/4 798 (800-2 3/4)
LOCAL ALTIMETER, WITHOUT LAST STEPDOWN FIX					
S-LOC 18R**	2040/40	662 (700-3/4)	2040-1 3/4	662	(500-1 3/4)
*** CIRCLING	2040-1	658 (700-1)	2040-1 7/8 658 (700-1 7/8)	2080-2 1/4 698 (700-2 1/4)	2180-2 3/4 798 (800-2 3/4)

FAF to MAP 4.1 NM					
Knots	60	90	120	150	180
Min:Sec	4:06	2:44	2:03	1:38	1:22

ILS Z or LOC RWY 18R

SC-1, 11 JUL 2024 to 08 AUG 2024

SC-1, 11 JUL 2024 to 08 AUG 2024