

ALTUS, OKLAHOMA

# ILS Z or LOC RWY 36L

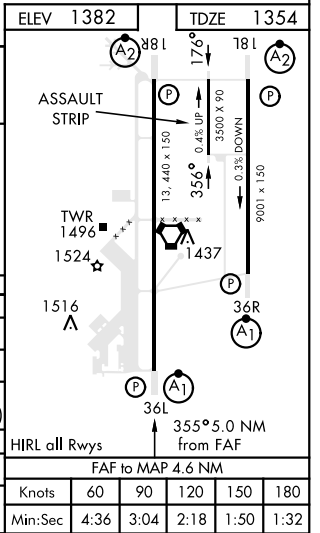
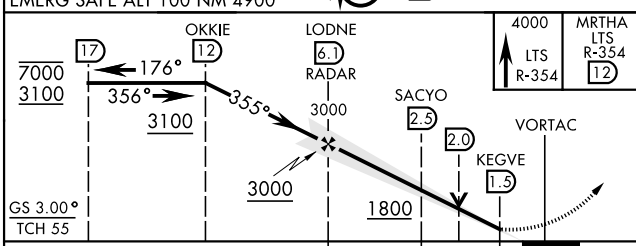
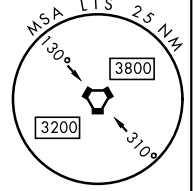
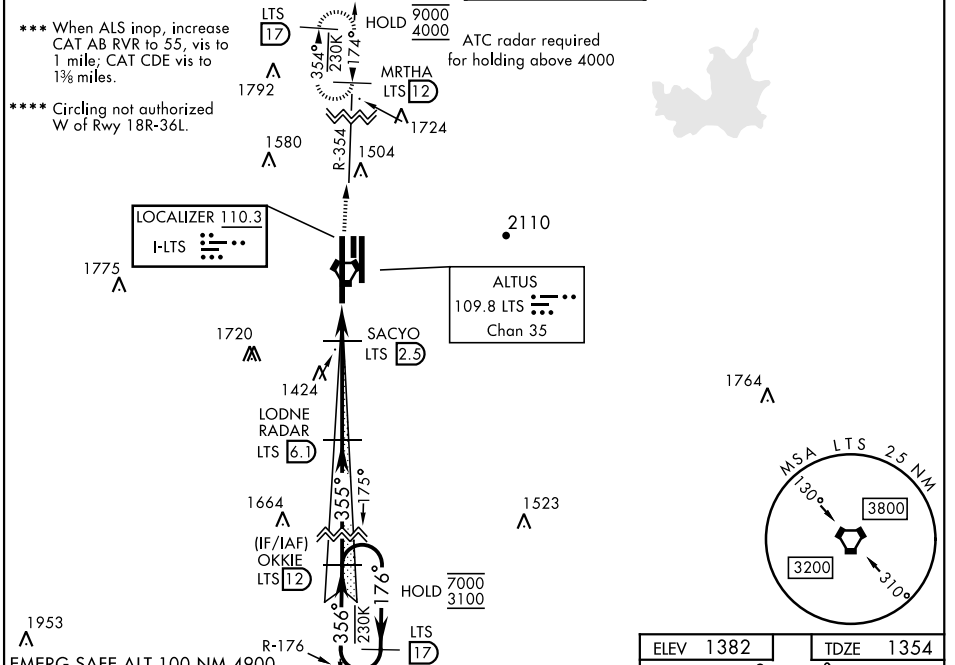
LOC I-LTS <b>110.3</b>	APCH CRS <b>355°</b>	Rwy Idg <b>13,440</b> TDZE <b>1354</b> Arpt Elev <b>1382</b>
---------------------------	-------------------------	---

AL-482 [USAF]

ALTUS AFB (KLTS)

DME or RADAR required.	ALSIF-1 	MISSED APPROACH: Climb to 4000, intercept LTS VORTAC R-354 to MRTHA and hold.
<p>▼ * When ALS inop, increase RVR to 40 and vis to 3/4 mile; RVR 18 authorized with use of FD or AP or HUD to DA. ** When ALS inop, increase RVR to 55 and vis to 1 mile.</p>		

ATIS ★ <b>109.8 273.5</b>	FORT WORTH CENTER <b>133.5 350.35</b>	APP CON <b>125.1 353.7</b>	TOWER ★ <b>119.65 254.4</b>	GND CON <b>121.85 275.8</b>	CLNC DEL <b>120.65 284.7</b>
------------------------------	--	-------------------------------	--------------------------------	--------------------------------	---------------------------------



CATEGORY	A	B	C	D	E
S-ILS 36L*	1554/24		200	(200-1/2)	
S-LOC 36L**	1680/24	326 (300-1/2)	1680/26	326	(300-1/2)
CIRCLING	1780-1 398 (400-1)	1840-1 458 (500-1)	1880-1 1/2 498 (500-1 1/2)	2080-2 1/4 698 (700-2 1/4)	2180-2 3/4 798 (800-2 3/4)
WITHOUT LAST STEPDOWN FIX					
S-LOC 36L***	1800/24	446 (500-1/2)	1800/45	446	(500-3/4)
CIRCLING	1800-1 418 (500-1)	1840-1 458 (500-1)	1880-1 1/2 498 (500-1 1/2)	2080-2 1/4 698 (700-2 1/4)	2180-2 3/4 798 (800-2 3/4)

ALTUS, OKLAHOMA

34°40'N-99°16'W

ALTUS AFB (KLTS)

Amdt 3 14JUL22

# ILS Z or LOC RWY 36L

SC-1, 11 JUL 2024 to 08 AUG 2024

SC-1, 11 JUL 2024 to 08 AUG 2024