

ALTUS, OKLAHOMA

# RNAV (RNP) Y RWY 36R

APCH CRS	Rwy Idg	9001
355°	TDZE	1361
	Arprt Elev	1382

AL-482 [USAF]

ALTUS AFB (KLTS)

RNP AR APCH

\* When ALS inop, increase RVR to 40, vis to 3/4 mile.  
 \*\* When ALS inop, increase RVR to 45, vis to 7/8 mile.



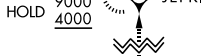
MISSED APPROACH: Climb to 4000 direct JEPKI and hold.

ATIS ★	FORT WORTH CENTER	APP CON	TOWER ★	GND CON	CLNC DEL
109.8 273.5	133.5 350.35	125.1 353.7	119.65 254.4	121.85 275.8	120.65 284.7

For uncompensated Baro-VNAV systems, procedure NA below -17°C (2°F) or above 54°C (130°F).

## FOR USE BY 97 AMW ACFT ONLY

5 NM  
 1750  
 2000  
 3350  
 JEPKI  
 ATC RADAR required for holding.



2083



1382

(FAF) CINVA

CINVA

2900

355°

(6)

1511

(IF/IAF) CIPNO

CIPNO

7000

3100

HOLD

355°

1750

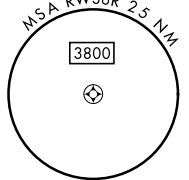
2300

355°

5 NM

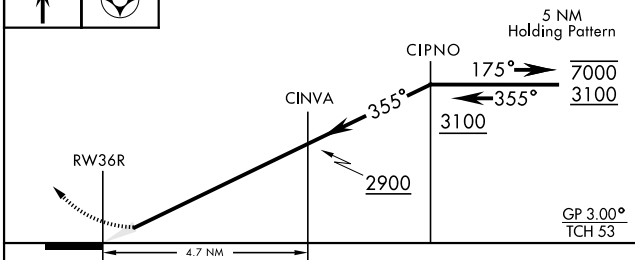
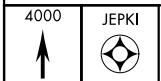
1524

1790

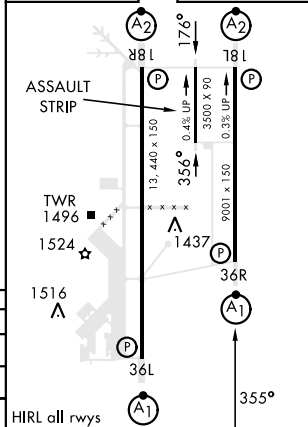


## AUTHORIZATION REQUIRED

EMERG SAFE ALT 100 NM 4900



ELEV 1382	TDZE 1361
-----------	-----------



CATEGORY	A	B	C	D
RNP 0.10 DA*	1611/24	250	(300-1/2)	
RNP 0.30 DA**	1672/24	311	(300-1/2)	
CIRCLING	NOT AUTHORIZED			

ALTUS, OKLAHOMA

34°40'N-99°16'W

ALTUS AFB (KLTS)

Amdt 3 07SEP23

# RNAV (RNP) Y RWY 36R

SC-1, 11 JUL 2024 to 08 AUG 2024

SC-1, 11 JUL 2024 to 08 AUG 2024