

ALTUS, OKLAHOMA

# RNAV (GPS) Z RWY 18L

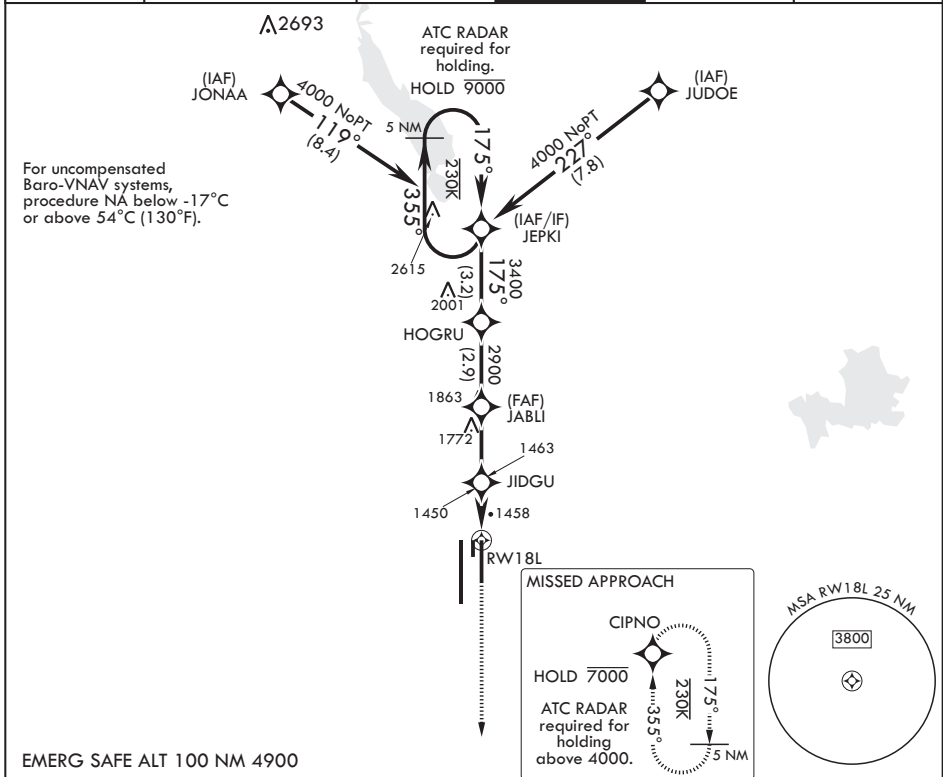
APCH CRS	Rwy Idg	<b>9001</b>
<b>175°</b>	TDZE	<b>1382</b>
	Arprt Elev	<b>1382</b>

AL-482 (USAF)

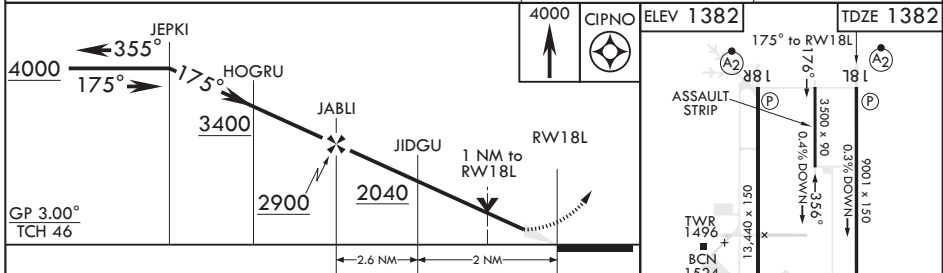
ALTUS AFB (KLTS)

RNP APCH. DME/DME RNP-0.3 NA	SALS	MISSED APPROACH: Climb to 4000 direct CIPNO and hold.
<p>▼ * When ALS inop, increase RVR to 55, vis to 1 mile.          ** Circling NA W of Rwy 18R-36L.</p>		

ATIS* <b>109.8 273.5</b>	FORT WORTH CENTER <b>133.5 350.35</b>	APP CON <b>125.1 353.7</b>	TOWER* <b>119.65 254.4</b>	GND CON <b>121.85 275.8</b>	CLNC DEL <b>120.65 284.7</b>
-----------------------------	--	-------------------------------	-------------------------------	--------------------------------	---------------------------------



EMERG SAFE ALT 100 NM 4900



CATEGORY	A	B	C	D	E
LNAV/VNAV DA	1632/40		250	(300-¾)	
LNAV MDA*	1760/40		378	(400-¾)	
<b>C</b> CIRCLING**	1780-1 398 (400-1)	1840-1 458 (500-1)	1880-1½ 498 (500-1½)	2080-2¼ 698 (700-2¼)	2180-2¾ 798 (800-2¾)

ALTUS, OKLAHOMA

34°40'N - 99°16'W

ALTUS AFB (KLTS)

Amdt 3 14JUL22  
TERPS

# RNAV (GPS) Z RWY 18L

SC-1, 11 JUL 2024 to 08 AUG 2024

SC-1, 11 JUL 2024 to 08 AUG 2024