

# ILS or LOC or RNAV (GPS) RWY 21L

SBAS Chan <b>62106</b> <b>W21A</b>	APCH CRS <b>215°</b>	Rwy Idg <b>10,995</b> TDZE <b>58</b> Arprt Elev <b>63</b>
--	-------------------------	---

[USAF]

TRAVIS AFB (KSUU)

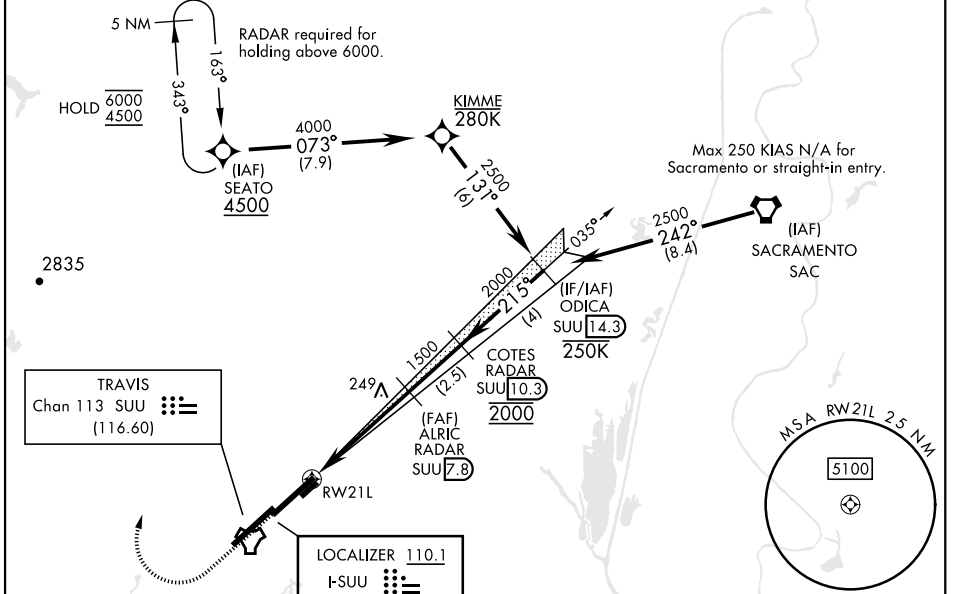
RNP APCH. RNAV1-GPS or RADAR required for ILS, LOC.  
 RADAR required for CAT E aircraft for full procedure off of SEATO.  
 \* When ALS inop, increase RVR to 40, vis to 3/4 miles.  
 \*\* When ALS inop, increase CAT AB RVR to 55, vis to 1 mile;  
 CAT CDE vis to 1 3/8 miles.  
 \*\*\*Circling not authorized NW of Rwy 3L-21R.



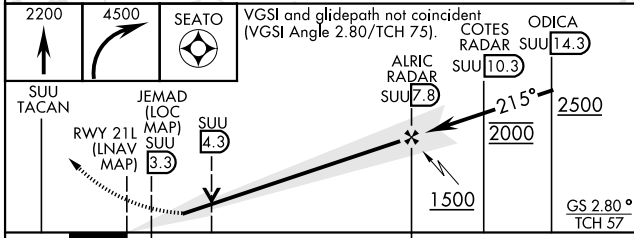
MISSED APPROACH: Climb to 2200 then climbing right turn to 4500 direct SEATO and hold, continue climb in hold to 4500.

ATIS <b>135.55 292.125</b>	APP CON <b>119.9 322.325 (S)</b> <b>126.6 281.45 (N)</b>	TOWER <b>120.75 254.4</b>	GND CON <b>121.8 289.4</b>	CLNC DEL <b>127.55 335.8</b>
-------------------------------	--	------------------------------	-------------------------------	---------------------------------

† When TDZ/CL inop, increase RVR to 24, RVR 18 authorized use of FD or AP or HUD to DA.

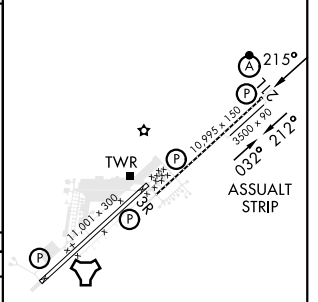


EMERG SAFE ALT 100 NM 13,000



ELEV	63	TDZE	58
------	----	------	----

CATEGORY	A	B	C	D	E
S-ILS 21L**	258/18		200	(200-1/2)	
LPV DA**	258/18		200	(200-1/2)	
S-LOC 21L**	500/24	442 (500-1/2)	500/45	442	(500-7/8)
LNNAV MDA**	500/24	442 (500-1/2)	500/45	442	(500-7/8)
CIRCLING***	560-1 497 (500-1)	660-1 597 (600-1)	1100-3 1037(1100-3)	1200-3	1137 (1200-3)



HIRL Rwy 3R-21L					
MIRL Rwy 032° - 212°					
TDZL/CL Rwy 3R, 21L					
FAF to MAP 4.5 NM					
Knots	60	90	120	150	180
Min:Sec	4:30	3:00	2:15	1:48	1:30

# ILS or LOC or RNAV (GPS) RWY 21L

SW-2, 11 JUL 2024 to 08 AUG 2024

SW-2, 11 JUL 2024 to 08 AUG 2024