

(LIFRR2.LIFRR) 24109

AL-494 (FAA)

LIFRR TWO DEPARTURE (RNAV)

HOMESTEAD ARB (KHST)
HOMESTEAD, FLORIDA

**TOP ALTITUDE:
ASSIGNED BY ATC**

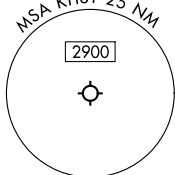
RNAV 1 - DME/DME/IRU or GPS.

RADAR required for non-GPS
equipped aircraft.

NOTE: Accelerate to 250K until leaving 10000,
if unable, advise ATC.

NOTE: Jet aircraft only.

NOTE: For aircraft filed at or below 12000.

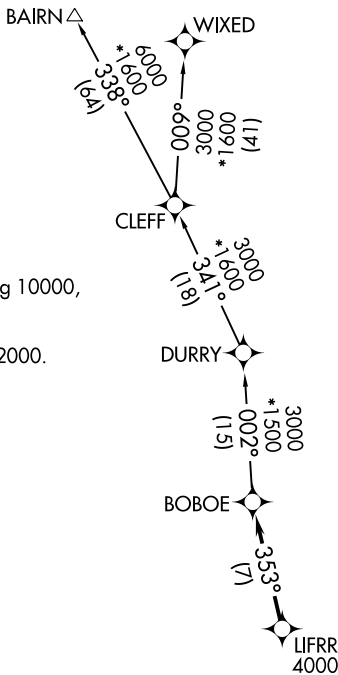


TAKEOFF MINIMUMS

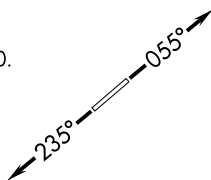
Rwy 6: Standard with minimum climb of 500'/NM to 1800.

Rwy 24: Standard with minimum climb of 500'/NM to 2200.

NOTE: Chart not to scale.



MIAMI DEP CON
125.5 354.1
 ATIS*
 132.275 269.9
 CLNC DEL
 121.75 275.8
 GND CON
 121.75 275.8
 HOMESTEAD TOWER
 133.45 279.55



DEPARTURE ROUTE DESCRIPTION

TAKEOFF RUNWAY 6: Climb on heading 055° or as assigned by ATC, thence. . .
TAKEOFF RUNWAY 24: Climb on heading 235° or as assigned by ATC, thence. . .

. . . for RADAR vector to cross LIFRR at or above 4000, then on track 353° to BOBOE, then on assigned transition, maintain ATC assigned altitude, expect clearance to filed altitude within 10 minutes after departure.

BAIRN TRANSITION (LIFRR2.BAIRN)
WIXED TRANSITION (LIFRR2.WIXED)

LIFRR TWO DEPARTURE (RNAV)
 (LIFRR2.LIFRR) 21MAR24

HOMESTEAD, FLORIDA
 HOMESTEAD ARB (KHST)

SE-3, 11 JUL 2024 to 08 AUG 2024

SE-3, 11 JUL 2024 to 08 AUG 2024