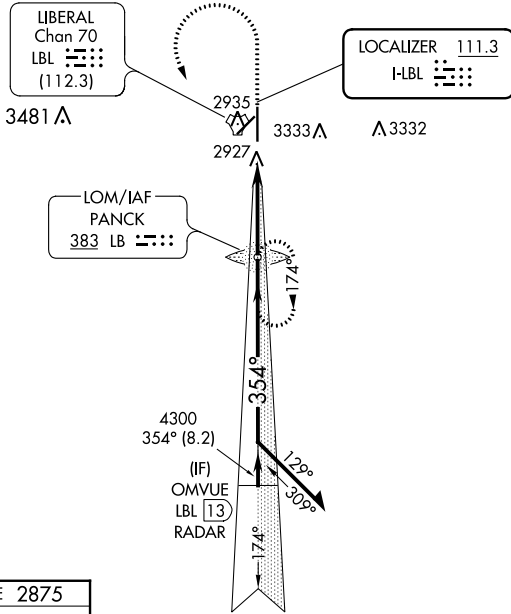


LOC I-LBL 111.3	APP CRS 354°	Rwy Idg TDZE Apt Elev	7105 2875 2886
---------------------------	------------------------	-----------------------------	---

ILS or LOC RWY 35
LIBERAL MID-AMERICA RGNL (L.B.L)

ADF or RADAR required.	MALSR 	MISSED APPROACH: Climb to 4000 then climbing left turn to 4600 direct PANCK LOM and hold.
V A Circling NA east of Rwy 17-35. For inop ALS, increase S-LOC 35 Cats C/D visibility to ½ SM.		

AWOS-3PT 118.375	KANSAS CITY CENTER 134.0 257.625	UNICOM 122.8 (CTAF)
----------------------------	--	-------------------------------



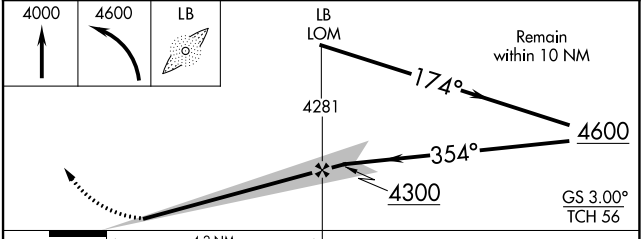
NC-2, 11 JUL 2024 to 08 AUG 2024

NC-2, 11 JUL 2024 to 08 AUG 2024

ELEV 2886	D	TDZE 2875
REIL Rwys 4, 17 and 22		
MIRL Rwy 4-22		
HIRL Rwy 17-35		

Obstacle diagram details:
 - Z1
 - 5000
 - 75
 - 100
 - 150
 - 200
 - 250
 - 2928
 - 35
 - 354°

FAF to MAP 4.2 NM					
Knots	60	90	120	150	180
Min:Sec	4:12	2:48	2:06	1:41	1:24



	4.2 NM			
CATEGORY	A	B	C	D
S-ILS 35	3075-½ 200 (200-½)			
S-LOC 35	3180-½ 305 (300-½)			
C CIRCLING	3280-1 394 (400-1)	3400-1 514 (600-1)	3400-1½ 514 (600-1½)	3460-2 574 (600-2)