

WAAS CH <b>72905</b> <b>W04A</b>	APP CRS <b>039°</b>	Rwy Idg TDZE Apt Elev	<b>5000</b> <b>2885</b> <b>2885</b>
--	------------------------	-----------------------------	---

# RNAV (GPS) RWY 4

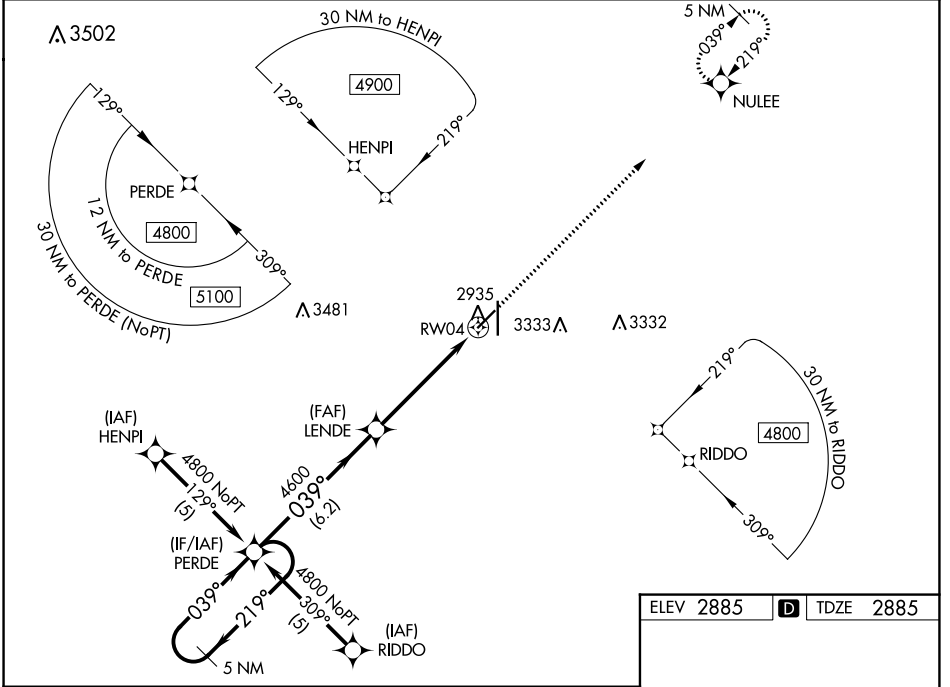
LIBERAL MID-AMERICA RGNL (L.B.L.)

RNP APCH - GPS.

**⚠** For uncompensated Baro-VNAV systems, LNAV/VNAV NA below -20°C or above 54°C.  
**⚠** Circling NA east of Rwy 17-35. When local altimeter setting not received, use Guymon altimeter setting and increase LPV DA to 3248 feet; increase LNAV/VNAV DA to 3412 feet and all visibilities 3/8 SM. Increase all MDAs 120 feet and LNAV visibility Cat C/D 3/8 SM, and Circling visibility Cat C/D 1/4 SM. Baro-VNAV NA when using Guymon Muni altimeter setting. VDP NA when using Guymon Muni altimeter setting.

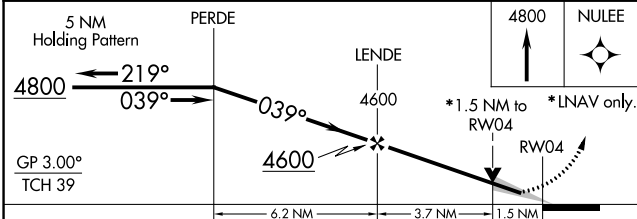
MISSED APPROACH: Climb to 4800 direct NULEE and hold.

AWOS-3PT <b>118.375</b>	KANSAS CITY CENTER <b>134.0 257.625</b>	UNICOM <b>122.8 (CTAF) 0</b>
----------------------------	--	---------------------------------

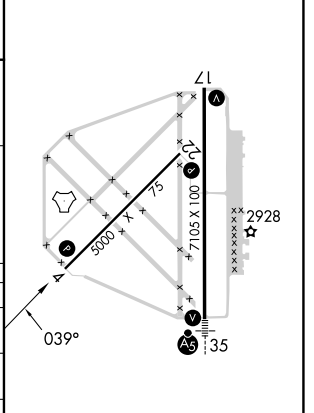


NC-2, 11 JUL 2024 to 08 AUG 2024

NC-2, 11 JUL 2024 to 08 AUG 2024



ELEV 2885	<b>D</b> TDZE 2885
-----------	--------------------



CATEGORY	A	B	C	D
LPV DA	3136-1		251 (300-1)	
LNAV/VNAV DA	3300-1 3/8		415 (500-1 3/8)	
LNAV MDA	3400-1 515 (600-1)		3400-1 3/8 515 (600-1 3/8)	
<b>C</b> CIRCLING	3400-1 515 (600-1)		3640-2 1/4 755 (800-2 1/4) 3640-2 1/2 755 (800-2 1/2)	

REIL Rws 4, 17 and 22 **0**  
 MIREL Rwy 4-22 **0**  
 HIRL Rwy 17-35 **0**