

HI-ILS or LOC/DME Z RWY 23L

LOC I-EDW 110.1	APCH CRS 226°	Rwy ldg TDZE Arprt Elev 15,024 2286 2311
---------------------------	-------------------------	--

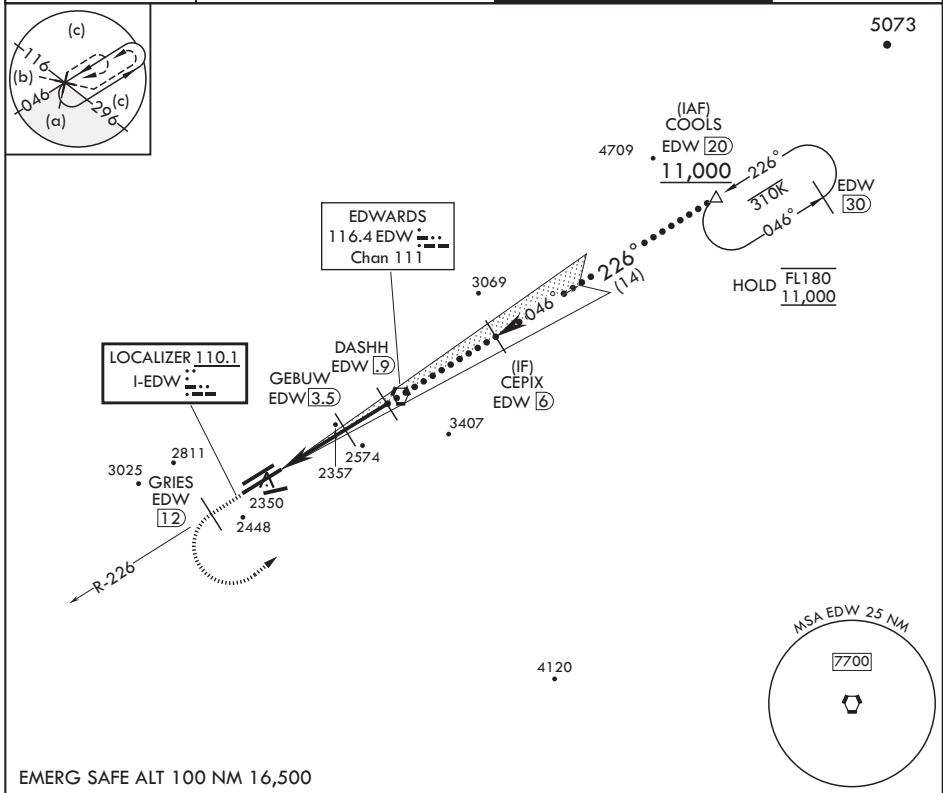
AL-500 (USAF)

EDWARDS AFB (KEDW)

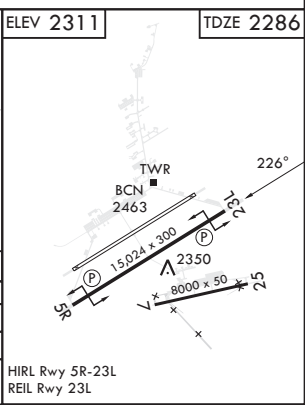
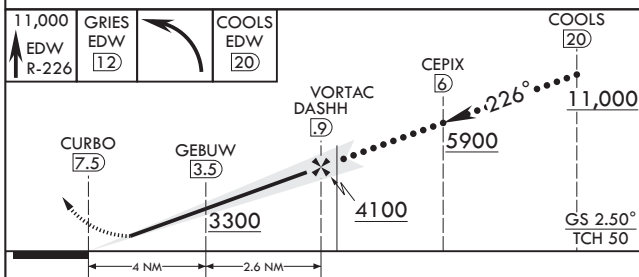
V * Circling not authorized NW of Rwy 5L-23R. Circling not authorized at night to Rwy 5L-23R.

MISSED APPROACH: Climb to 11,000. Track EDW VORTAC R-226 outbound to GRIES, then turn left direct COOLS and hold. Missed Approach requires use of RNAV or ATC RADAR monitoring.

ATIS * 127.425 269.9	JOSHUA APP CON/DEP CON 133.65 348.7	TOWER * 120.7 (CTAF) 318.1 (CTAF)	GND CON 121.8 225.4
--------------------------------	---	---	-------------------------------



EMERG SAFE ALT 100 NM 16,500



CATEGORY	C	D	E
S-ILS 23L	2486-3/4	200	(200-3/4)
S-LOC 23L	2540-3/4	254	(300-3/4)
C CIRCLING*	2880-1 1/2 569 (600-1 1/2)	2880-2	569 (600-2)

HI-ILS or LOC/DME Z RWY 23L

SW-3, 11 JUL 2024 to 08 AUG 2024

SW-3, 11 JUL 2024 to 08 AUG 2024