

VOR/DME or TACAN Y RWY 5R

AL-500 [USAF]

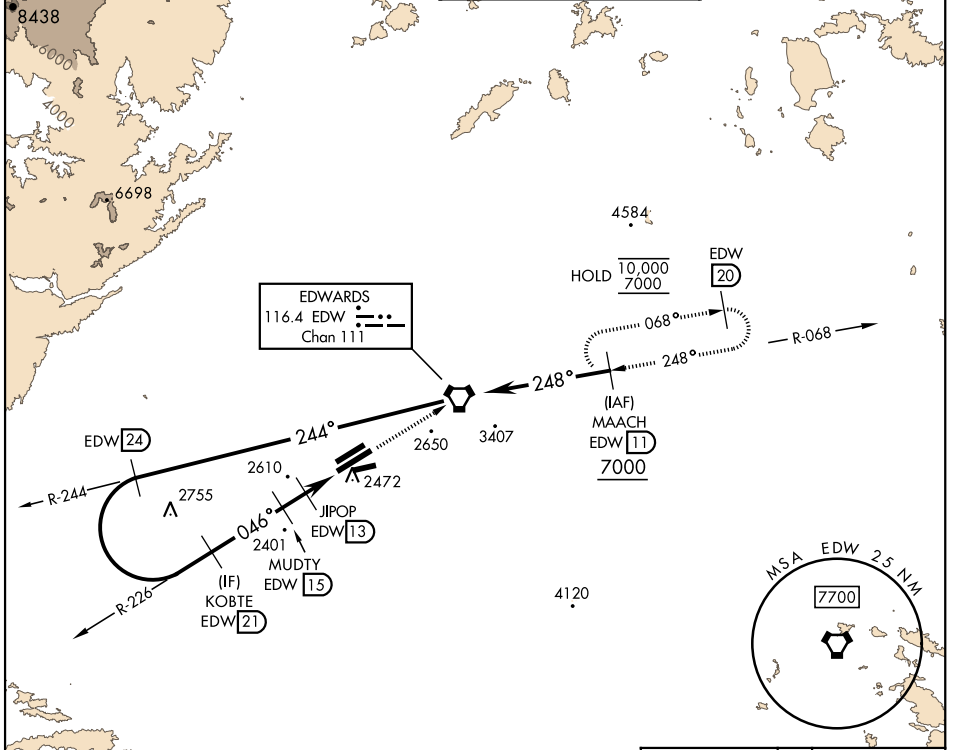
EDWARDS AFB (KEDW)

VORTAC EDW 116.4 Chan 111	APCH CRS 046°	Rwy ldg 15,024 TDZE 2303 Arpt Elev 2311
---	-------------------------	--

⚠ *Circling not authorized NW of Rwy 5L-23R.
 Circling not authorized at night to Rwy 5L-23R.

MISSED APPROACH: Track EDW VORTAC R-226 to EDW.
 Intercept EDW R-068 to MAACH and hold. Maintain 7000.
 Missed approach requires use of RNAV or ATC radar monitoring.

ATIS ★ 127.425 269.9	JOSHUA APP/DEP CON 133.65 348.7	TOWER ★ 120.7 (CTAF) 318.1 (CTAF)	GND CON 121.8 225.4
--------------------------------	---	--	-------------------------------



SW-3, 11 JUL 2024 to 08 AUG 2024

SW-3, 11 JUL 2024 to 08 AUG 2024

EMERG SAFE ALT 100 NM 16,500

R-244 (24)	5700	244°	VORTAC	7000	EDW
KOBTE R-226 (21)	5300	046°	MUDTY EDW (15)	JIPOP EDW (13)	SABKE (10)
Remain within 26 NM					
2.92° TCH 47	3900	3200	2 NM	3 NM	

CATEGORY	A	B	C	D	E
S-5R	2820-1 517 (600-1)		2820-1½ 517	517	(600-1½)
CIRCLING*	2880-1 569 (600-1)		2880-1½ 569 (600-1½)	2880-2	569 (600-2)

EDWARDS AFB (KEDW) details:
 - TWR at 2463 ft
 - RWY 5R-23L (15,024 x 300)
 - REIL RWY 23L
 - HIRL RWY 5R-23L
 - ELEV 2311, TDZE 2303

VOR/DME or TACAN Y RWY 5R