

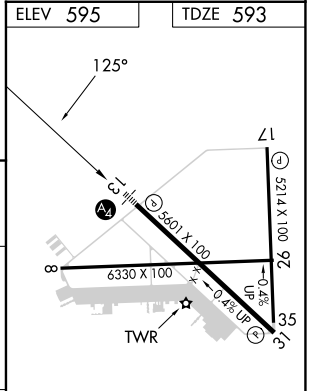
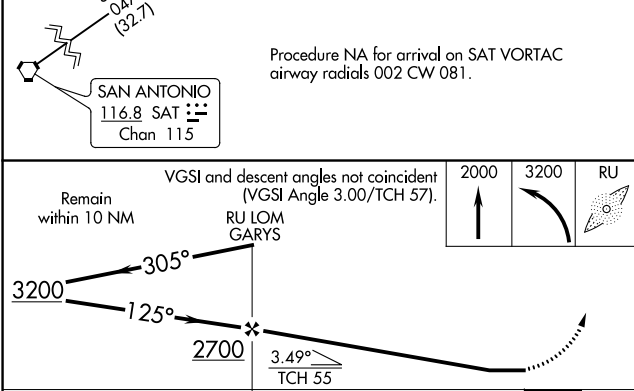
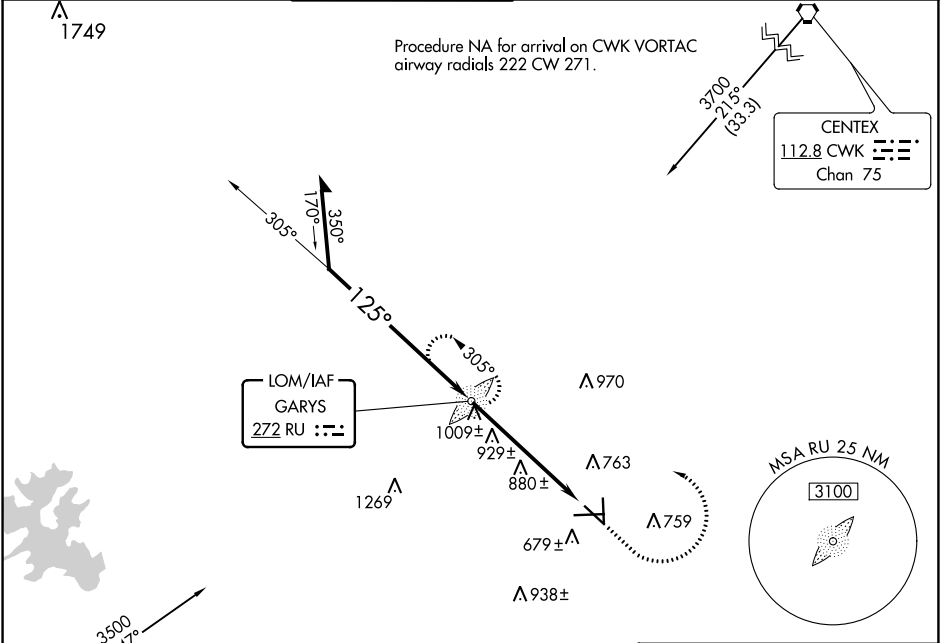
LOM RU	APP CRS	Rwy Idg TDZE	5601
272	125°	Apt Elev	593
			595

NDB RWY 13

SAN MARCOS RGNL (HYI)

		MALS	MISSED APPROACH: Climb to 2000 then climbing left turn to 3200 direct GARYS LOM and hold.		
--	--	------	---	--	--

ATIS ★ 120.825	AUSTIN APP CON 119.0 370.85	SAN MARCOS TOWER★ 126.825 (CTAF)	GND CON 120.125	CLNC DEL 120.125	CLNC DEL 121.35 (when twr closed)
--------------------------	---------------------------------------	--	---------------------------	----------------------------	--



CATEGORY	A	B	C	D	MIRL Rwy 8-26, 13-31, and 17-35												
S-13	1240-3/4	647 (700-3/4)	1240-1 5/8	647 (700-1 1/8)	FAF to MAP 5.5 NM												
CIRCLING	1240-1	645 (700-1)	1240-1 7/8	1320-2 1/4 645 (700-1 7/8) 725 (800-2 1/4)	<table border="1"> <tr> <td>Knots</td> <td>60</td> <td>90</td> <td>120</td> <td>150</td> <td>180</td> </tr> <tr> <td>Min:Sec</td> <td>5:30</td> <td>3:40</td> <td>2:45</td> <td>2:12</td> <td>1:50</td> </tr> </table>	Knots	60	90	120	150	180	Min:Sec	5:30	3:40	2:45	2:12	1:50
Knots	60	90	120	150	180												
Min:Sec	5:30	3:40	2:45	2:12	1:50												

SC-3, 11 JUL 2024 to 08 AUG 2024

SC-3, 11 JUL 2024 to 08 AUG 2024