

WAAS CH 90523 W21A	APP CRS 208°	Rwy Idg TDZE Apt Elev	5500 3286 3298
--	------------------------	-----------------------------	---

RNAV (GPS) RWY 21

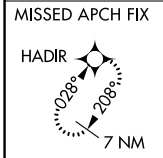
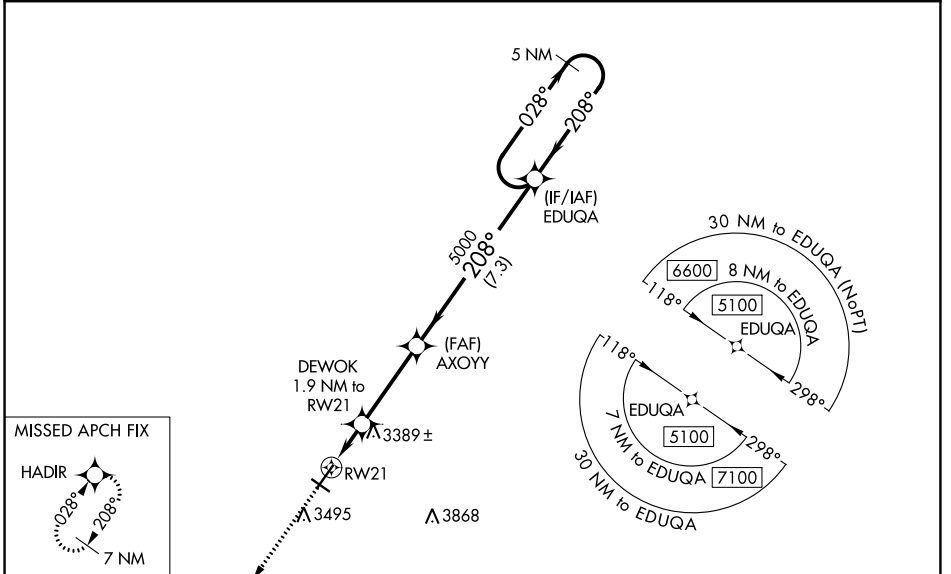
CHADRON MUNI (CDR)

RNP APCH-GPS.

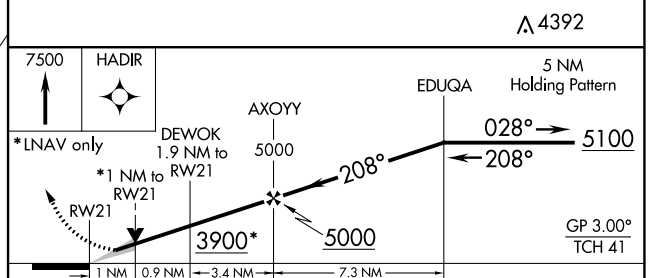
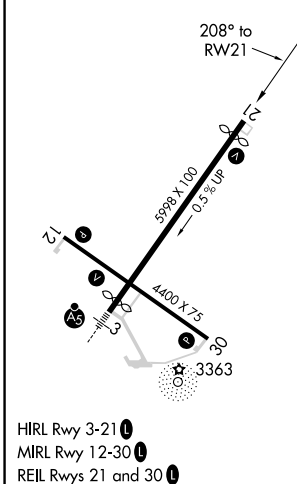
⚠ Baro-VNAV NA when using Pine Ridge altimeter setting. For uncompensated Baro-VNAV systems, LNAV/VNAV NA below -21°C or above 54°C. VDP NA with Pine Ridge altimeter setting. When local altimeter setting not received, use Pine Ridge altimeter setting and increase LPV DA to 3606 feet, LNAV/VNAV DA to 3754 feet and all MDA 80 feet; increase LNAV/VNAV visibility ¼ SM all Cats, LNAV Cats C and D visibility ¼ SM, and Circling Cat C visibility ¼ SM.

MISSED APPROACH: Climb to 7500 direct HADIR and hold, continue climb-in-hold to 7500.

ASOS 118.05	DENVER CENTER 127.95 338.2	UNICOM 122.8 (CTAF) 📞
-----------------------	--------------------------------------	--



ELEV 3298	D	TDZE 3286
------------------	----------	------------------



CATEGORY	A	B	C	D
LPV DA		3536-1	250 (300-1)	
LNAV/VNAV DA		3684-1½	398 (400-1½)	
LNAV MDA		3640-1	354 (400-1)	
CIRCLING	3820-1 522 (600-1)	3920-1 622 (700-1)	3920-1¼ 622 (700-1¼)	4220-3 922 (1000-3)

NC-2, 11 JUL 2024 to 08 AUG 2024

NC-2, 11 JUL 2024 to 08 AUG 2024