

WAAS CH <b>72719</b> <b>W22A</b>	APP CRS <b>225°</b>	Rwy Idg TDZE Apt Elev	<b>5500</b> <b>1117</b> <b>1148</b>
--	------------------------	-----------------------------	---

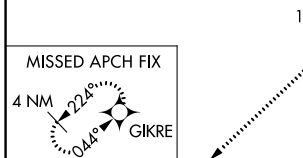
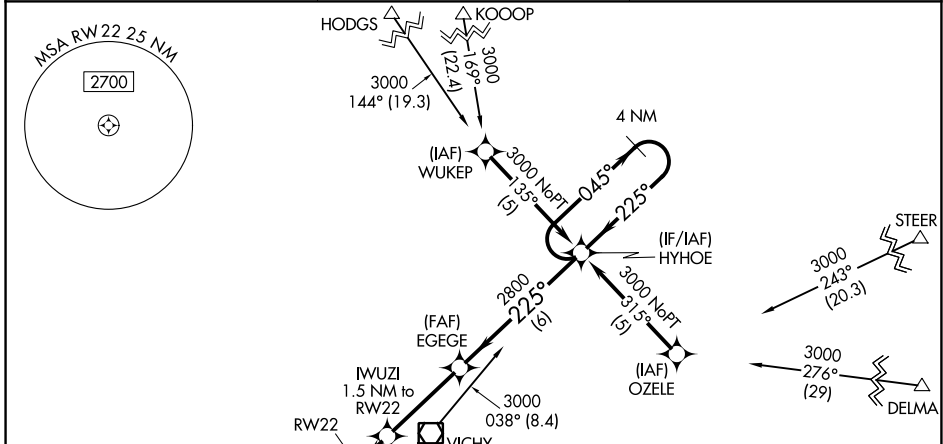
# RNAV (GPS) RWY 22

ROLLA NTL (VIH)

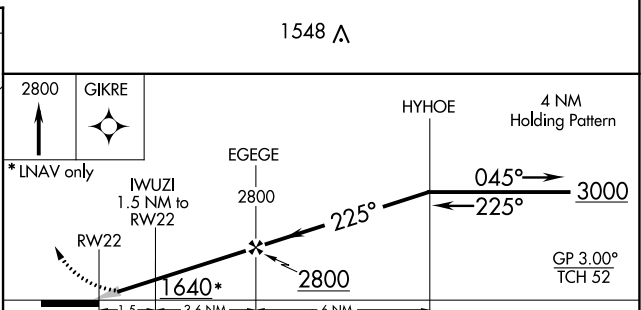
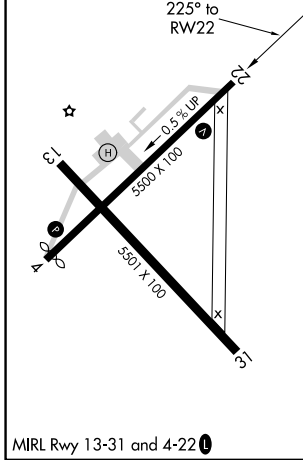
**▽** For uncompensated Baro-VNAV systems, LNAV/VNAV NA below -17°C (2°F) or above 46°C (114°F).  
**△** NA DME/DME RNP-0.3 NA.

**MISSED APPROACH:**  
 Climb to 2800 direct GIKRE and hold.

ASOS <b>119.025</b>	KANSAS CITY CENTER <b>128.35 284.675</b>	UNICOM <b>123.0 (CTAF) 0</b>
------------------------	---	---------------------------------



ELEV 1148	TDZE 1117
-----------	-----------



CATEGORY	A	B	C	D
LPV DA		1367-3/4	250 (300-3/4)	
LNAV/VNAV DA		1529-1 1/2	412 (400-1 1/2)	
LNAV MDA	1520-1	403 (400-1)	1520-1 1/4	403 (400-1 1/4)
CIRCLING	1700-1	552 (600-1)	1700-1 1/2 552 (600-1 1/2)	1740-2 592 (600-2)

NC-3, 11 JUL 2024 to 08 AUG 2024

NC-3, 11 JUL 2024 to 08 AUG 2024